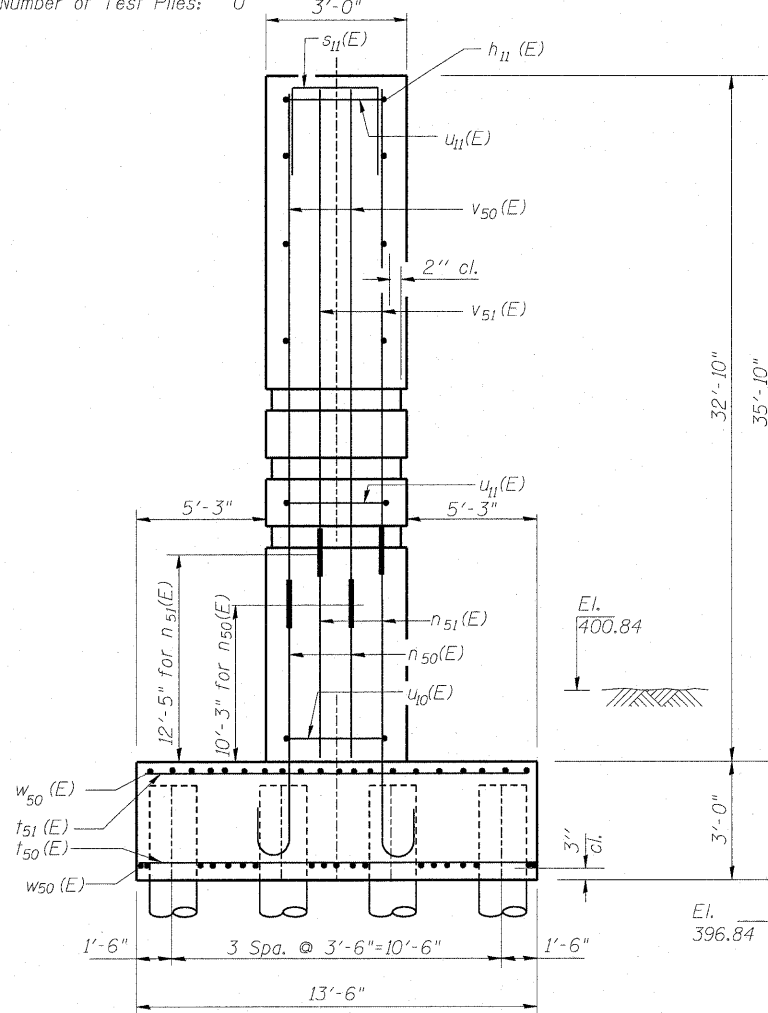
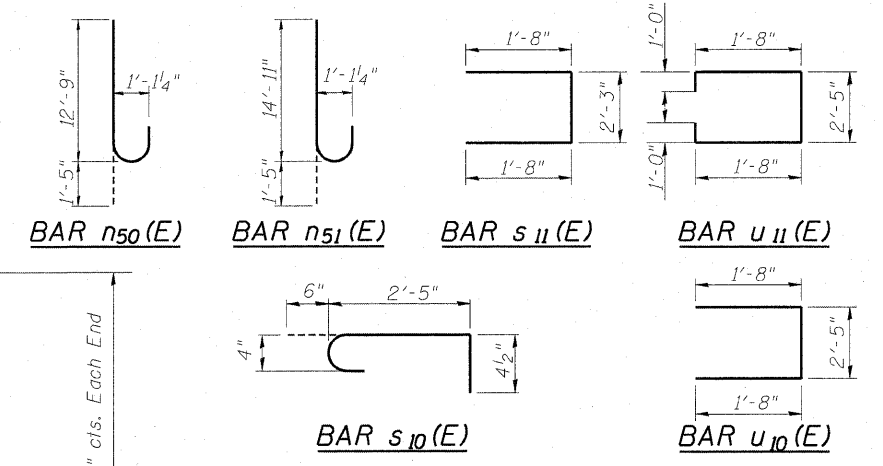
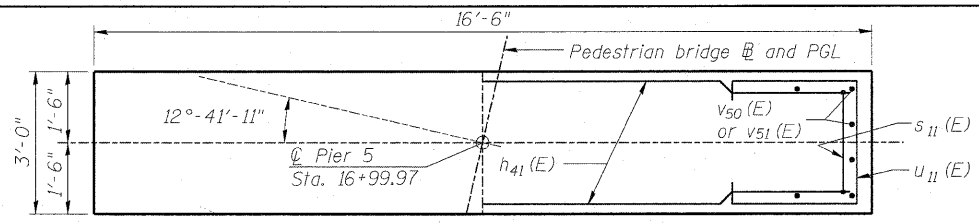
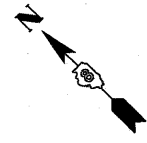
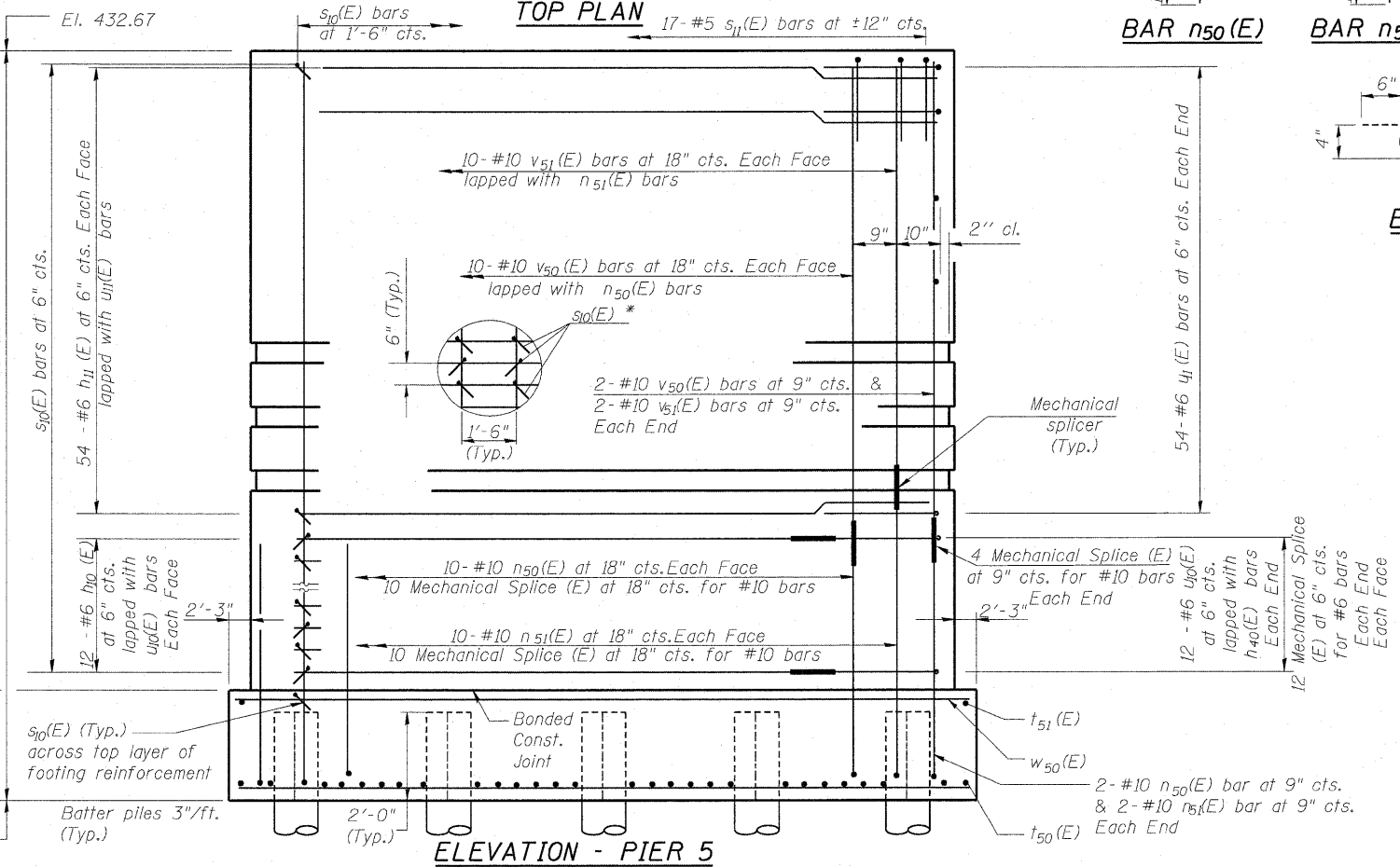


PILE DATA - PIER 5

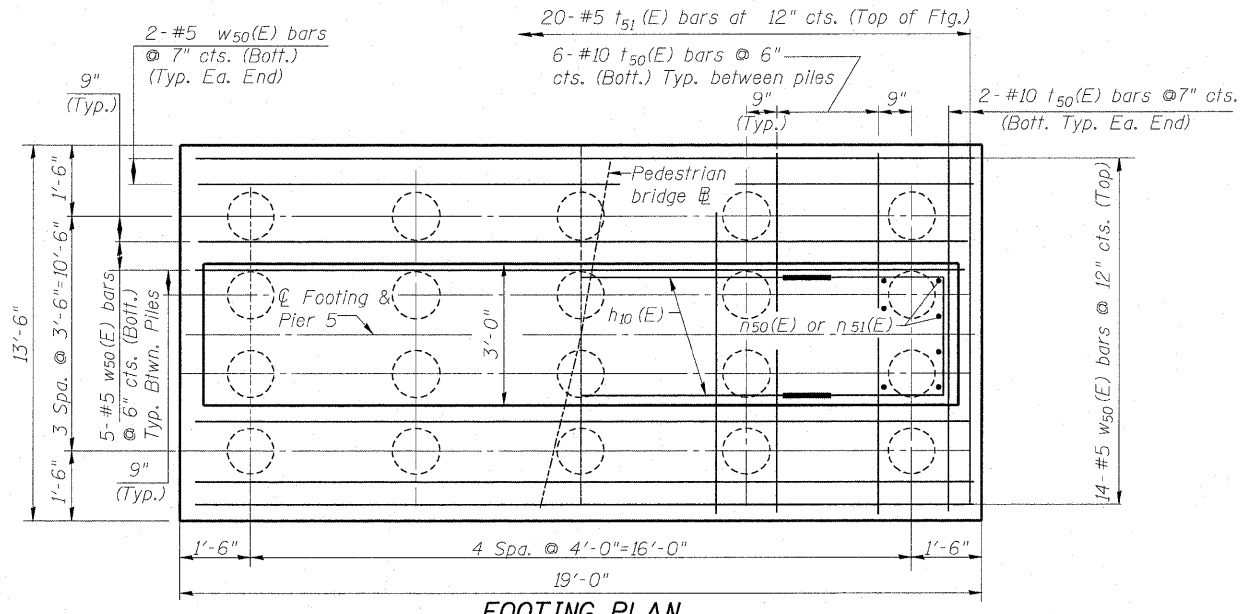
Type: Metal Shell 12" dia. x 1/4" wall with Pile Shoes
 Nominal Required Bearing: 330 kips
 Allowable Resistance Available: 110 kips
 Estimated Pile Length: 88 ft
 Number of Production Piles: 20
 Number of Test Piles: 0



END VIEW
N.T.S.



ELEVATION - PIER 5
(Looking East)
N.T.S.



FOOTING PLAN
N.T.S.

* Arrange s₁₀(E) bars in a grid pattern at intersection of n₅₀(E) or n₅₁(E) or v₅₀(E) or v₅₁(E) and h₁₀(E) or h₁₁(E) or u₁₀(E) or u₁₁(E). Orientation of 180° hook shall also be alternate.

BILL OF MATERIAL

Bar	No.	Size	Length	Shape
h ₁₀ (E)	24	#6	12'- 7"	—
h ₁₁ (E)	108	#6	15'- 11"	—
n ₅₀ (E)	24	#10	14'- 2"	U
n ₅₁ (E)	24	#10	16'- 4"	U
s ₁₀ (E)	670	#4	3'- 3 1/2"	L
s ₁₁ (E)	17	#5	5'- 7"	L
t ₅₀ (E)	28	#10	13'- 2"	—
t ₅₁ (E)	20	#5	13'- 2"	—
u ₁₀ (E)	24	#6	5'- 9"	U
u ₁₁ (E)	108	#6	7'- 9"	U
v ₅₀ (E)	24	#10	22'- 5"	—
v ₅₁ (E)	24	#10	20'- 3"	—
w ₅₀ (E)	33	#5	18'- 8"	—
Structure Excavation		Cu. Yd.	59.6	
Concrete Structures		Cu. Yd.	89	
Reinforcement Bars, Epoxy Coated		Pound	16,140	
Furnishing Metal Pile Shells 12" x 0.250"		Foot	1,800	
Driving Piles		Foot	1,760	
Piles Shoes		Each	20	
Concrete Sealer		Sq. Ft.	50	
Mechanical Sandblast Finish		Sq. Ft.	1,098	
Concrete Surface Color Treatment		Sq. Ft.	66	
Mechanical Splice		Each	96	

NOTES:

- All edges shall have standard 3/4" chamfers except as noted.
- Space reinforcement in cap to miss anchor bolts.
- For Anchor bolt details see Sheet PB-5. Truss fabricator shall determine size & location of anchor bolts. Cost included with Pedestrian Truss Superstructure.
- See Sheet PB-18 for urban design guideline.