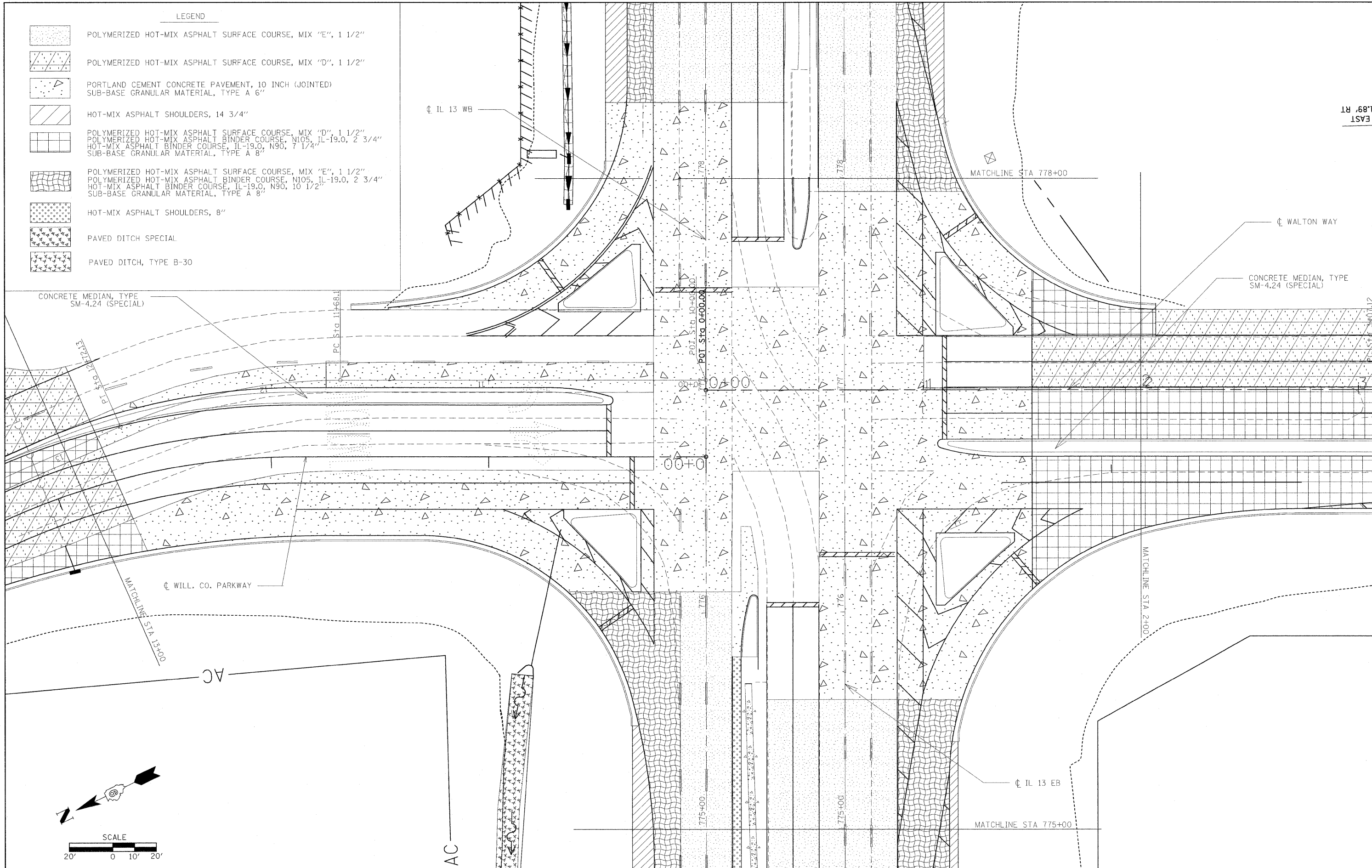
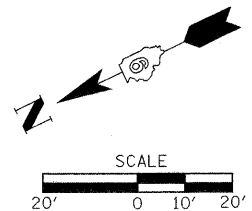


LEGEND

- POLYMERIZED HOT-MIX ASPHALT SURFACE COURSE, MIX "E", 1 1/2"
- POLYMERIZED HOT-MIX ASPHALT SURFACE COURSE, MIX "D", 1 1/2"
- PORTLAND CEMENT CONCRETE PAVEMENT, 10 INCH (JOINTED)
- SUB-BASE GRANULAR MATERIAL, TYPE A 6"
- HOT-MIX ASPHALT SHOULDERS, 14 3/4"
- POLYMERIZED HOT-MIX ASPHALT SURFACE COURSE, MIX "D", 1 1/2"
- POLYMERIZED HOT-MIX ASPHALT BINDER COURSE, N105, IL-19.0, 2 3/4"
- HOT-MIX ASPHALT BINDER COURSE, IL-19.0, N90, 7 1/4"
- SUB-BASE GRANULAR MATERIAL, TYPE A 8"
- POLYMERIZED HOT-MIX ASPHALT SURFACE COURSE, MIX "E", 1 1/2"
- POLYMERIZED HOT-MIX ASPHALT BINDER COURSE, N105, IL-19.0, 2 3/4"
- HOT-MIX ASPHALT BINDER COURSE, IL-19.0, N90, 10 1/2"
- SUB-BASE GRANULAR MATERIAL, TYPE A 8"
- HOT-MIX ASPHALT SHOULDERS, 8"
- PAVED DITCH SPECIAL
- PAVED DITCH, TYPE B-30



EAST  
1.89 RT



FILE NAME =	USER NAME = russellf
or:\pw\work\VPWIDOT\RUSSELLC\dm43738\0778053.sht.tgpl01.dgn	
PLOT SCALE = 20.00' / IN.	
PLOT DATE = 5/5/2009	

DESIGNED -	REVISED -
DRAWN -	REVISED -
CHECKED -	REVISED -
DATE -	REVISED -

**STATE OF ILLINOIS  
DEPARTMENT OF TRANSPORTATION**

<b>CONSTRUCTION SHEET</b>	
SCALE: 1"=20'	SHEET NO. OF SHEETS STA. TO STA.

F.A.P. RTE.	SECTION	COUNTY	TOTAL SHEETS	SHEET NO.
331	SEC. NO. (IX-1)N-1, TS-2	WILLIAMSON	190	53
CONTRACT NO. 78053				
FED. ROAD DIST. NO.		ILLINOIS FED. AID PROJECT		