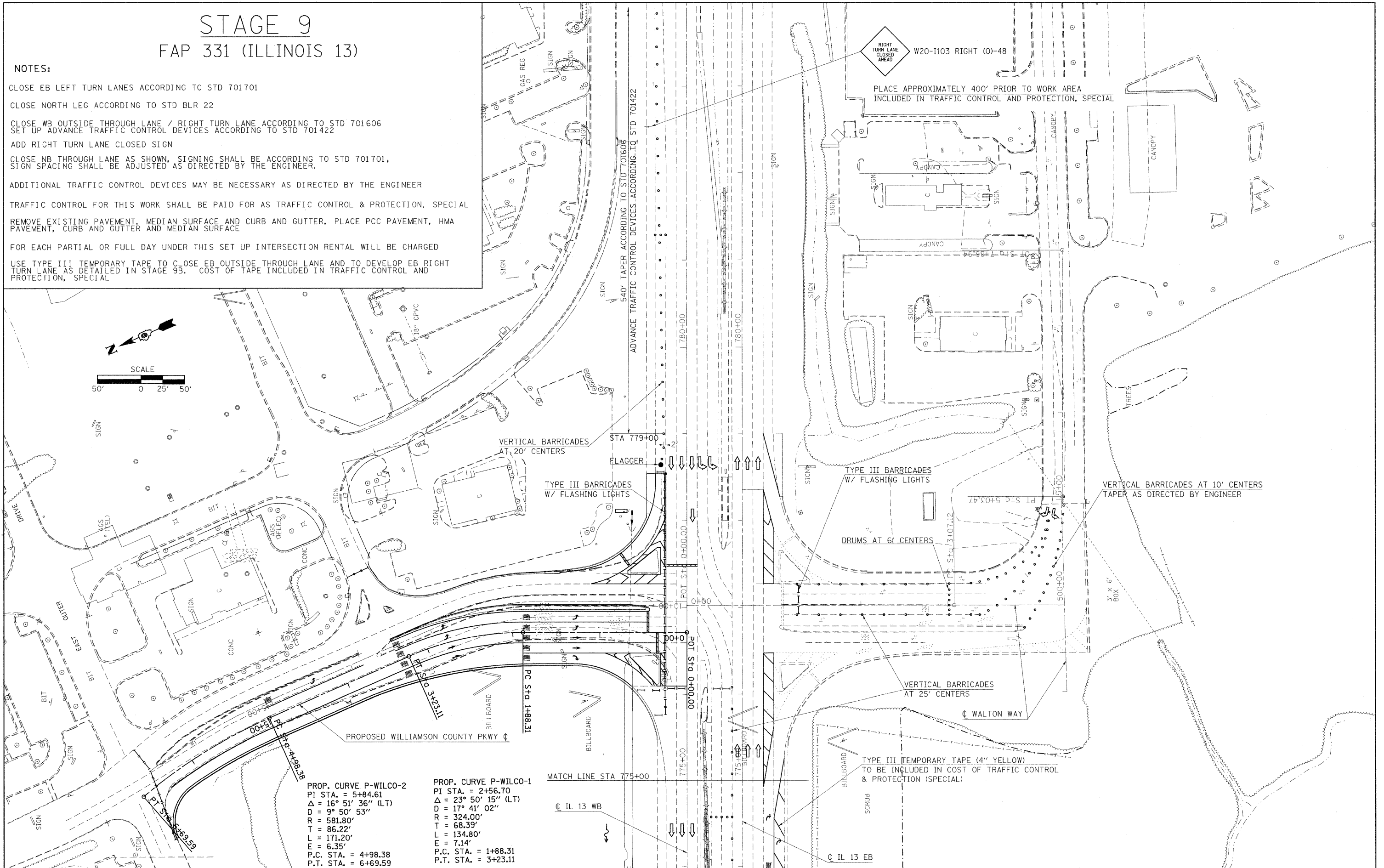
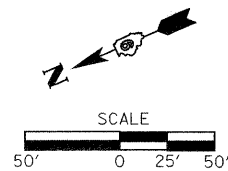


STAGE 9

FAP 331 (ILLINOIS 13)

NOTES:

- CLOSE EB LEFT TURN LANES ACCORDING TO STD 701701
- CLOSE NORTH LEG ACCORDING TO STD BLR 22
- CLOSE WB OUTSIDE THROUGH LANE / RIGHT TURN LANE ACCORDING TO STD 701606
SET UP ADVANCE TRAFFIC CONTROL DEVICES ACCORDING TO STD 701422
- ADD RIGHT TURN LANE CLOSED SIGN
- CLOSE NB THROUGH LANE AS SHOWN, SIGNING SHALL BE ACCORDING TO STD 701701,
SIGN SPACING SHALL BE ADJUSTED AS DIRECTED BY THE ENGINEER.
- ADDITIONAL TRAFFIC CONTROL DEVICES MAY BE NECESSARY AS DIRECTED BY THE ENGINEER
- TRAFFIC CONTROL FOR THIS WORK SHALL BE PAID FOR AS TRAFFIC CONTROL & PROTECTION, SPECIAL
- REMOVE EXISTING PAVEMENT, MEDIAN SURFACE AND CURB AND GUTTER, PLACE PCC PAVEMENT, HMA PAVEMENT, CURB AND GUTTER AND MEDIAN SURFACE
- FOR EACH PARTIAL OR FULL DAY UNDER THIS SET UP INTERSECTION RENTAL WILL BE CHARGED
- USE TYPE III TEMPORARY TAPE TO CLOSE EB OUTSIDE THROUGH LANE AND TO DEVELOP EB RIGHT TURN LANE AS DETAILED IN STAGE 9B. COST OF TAPE INCLUDED IN TRAFFIC CONTROL AND PROTECTION, SPECIAL



<p>PROP. CURVE P-WILCO-2 PI STA. = 5+84.61 $\Delta = 16^\circ 51' 36''$ (LT) $D = 9^\circ 50' 53''$ $R = 581.80'$ $T = 86.22'$ $L = 171.20'$ $E = 6.35'$ P.C. STA. = 4+98.38 P.T. STA. = 6+69.59</p>	<p>PROP. CURVE P-WILCO-1 PI STA. = 2+56.70 $\Delta = 23^\circ 50' 15''$ (LT) $D = 17^\circ 41' 02''$ $R = 324.00'$ $T = 68.39'$ $L = 134.80'$ $E = 7.14'$ P.C. STA. = 1+88.31 P.T. STA. = 3+23.11</p>
---	--