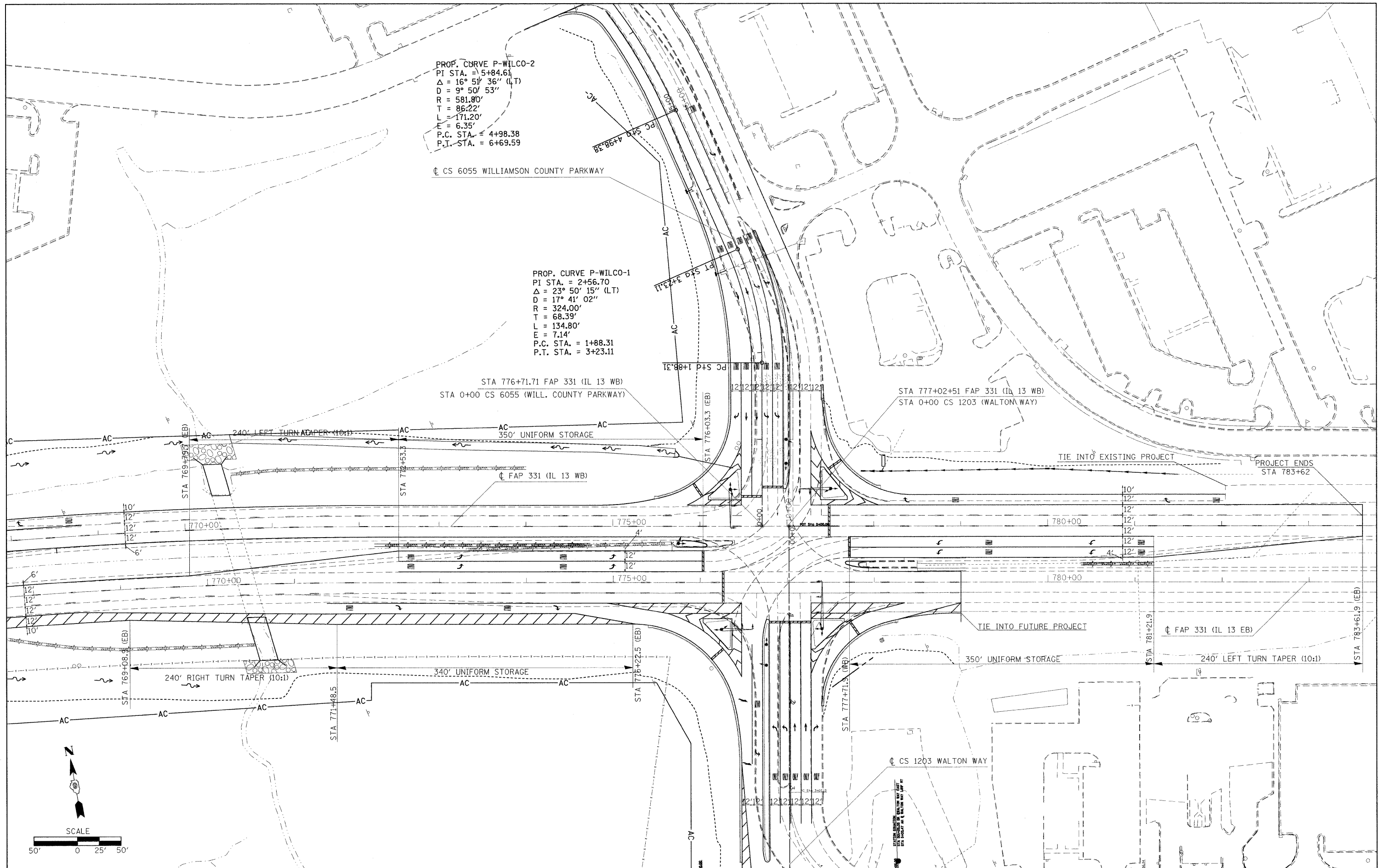


PROP. CURVE P-WILCO-2
 PI STA. = 5+84.61
 $\Delta = 16^\circ 51' 36''$ (LT)
 $D = 9^\circ 50' 53''$
 $R = 581.80'$
 $T = 86.22'$
 $L = 171.20'$
 $E = 6.35'$
 P.C. STA. = 4+98.38
 P.T. STA. = 6+69.59

PROP. CURVE P-WILCO-1
 PI STA. = 2+56.70
 $\Delta = 23^\circ 50' 15''$ (LT)
 $D = 17^\circ 41' 02''$
 $R = 324.00'$
 $T = 68.39'$
 $L = 134.80'$
 $E = 7.14'$
 P.C. STA. = 1+88.31
 P.T. STA. = 3+23.11

STA 776+71.71 FAP 331 (IL 13 WB)
 STA 0+00 CS 6055 (WILL. COUNTY PARKWAY)

STA 777+02+51 FAP 331 (IL 13 WB)
 STA 0+00 CS 1203 (WALTON WAY)



FILE NAME =	USER NAME = russellof	DESIGNED -	REVISED -	STATE OF ILLINOIS DEPARTMENT OF TRANSPORTATION	GEOMETRICS	F.A.P. RTE.	SECTION	COUNTY	TOTAL SHEETS	SHEET NO.	
es:\pwork\p\WIDOT\RUSSELLCF\dms35765\...	78053_4\1\w\sheet.m32	DRAWN -	REVISED -			331	SEC. NO. (IX-1N-1, TS-2)	WILLIAMSON	190	78	
	PLOT SCALE = 50.0000' / IN.	CHECKED -	REVISED -			CONTRACT NO. 78053					
	PLOT DATE = 5/6/2009	DATE -	REVISED -			FED. ROAD DIST. NO. ILLINOIS FED. AID PROJECT					
SCALE: 1"=50'						SHEET NO. OF SHEETS		STA. TO STA.			