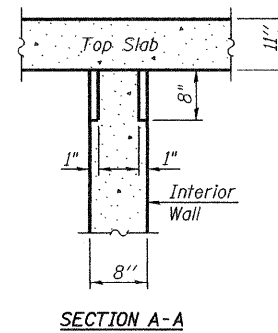
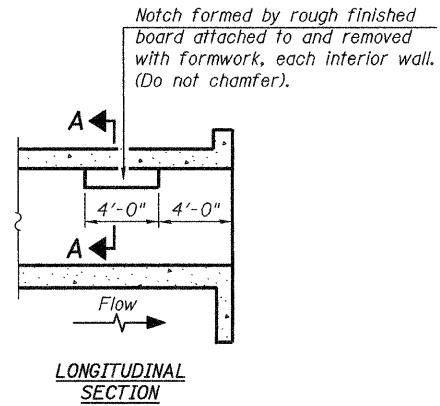


STATE OF ILLINOIS  
DEPARTMENT OF TRANSPORTATION



PHOEBE NESTING  
SITE DETAILS  
(Downstream End Only)

TOTAL BILL OF MATERIAL

ITEM	UNIT	TOTAL
Concrete Box Culverts	Cu. Yd.	215.2
Reinforcement Bars, Epoxy Coated	Pound	33,190
Stone Riprap, Class A4	Sq. Yd.	202
Filter Fabric	Sq. Yd.	202
Name Plates	Each	1
Expansion Bolts $\frac{3}{4}$ " $\phi$	Each	76

DESIGNED Patrick M. Petrone
CHECKED Jay D. Edwards
DRAWN BECKY M. LEACH
CHECKED PMP/JDE

EXAMINED	JUNE 10, 2009
PASSED	

THOMAS J. DOMAGALAKI  
 PROFESSIONAL ENGINEER  
 ENGINEER OF BRIDGES AND STRUCTURES

RALPH E. ANDERSON  
 ENGINEER OF BRIDGES AND STRUCTURES

GENERAL DATA  
STRUCTURE NO. 100-2007

SHEET NO. 2	F.A.P. RTE.	SECTION	COUNTY	TOTAL SHEETS	SHEET NO.
	331	1X-1	WILLIAMSON	190	95
7 SHEETS	CONTRACT NO. 78053				
FED. ROAD DIST. NO. - ILLINOIS FED. AID PROJECT					

Rev.