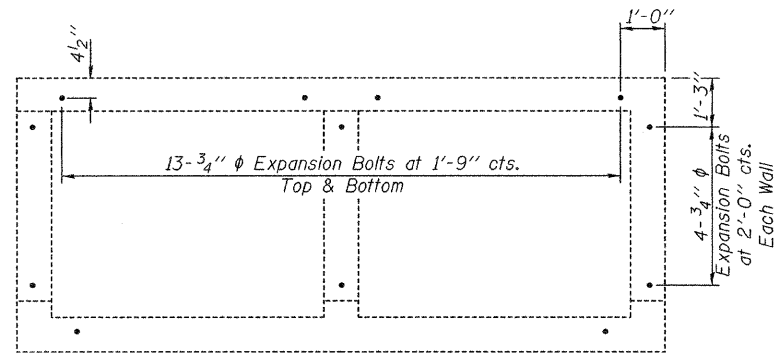
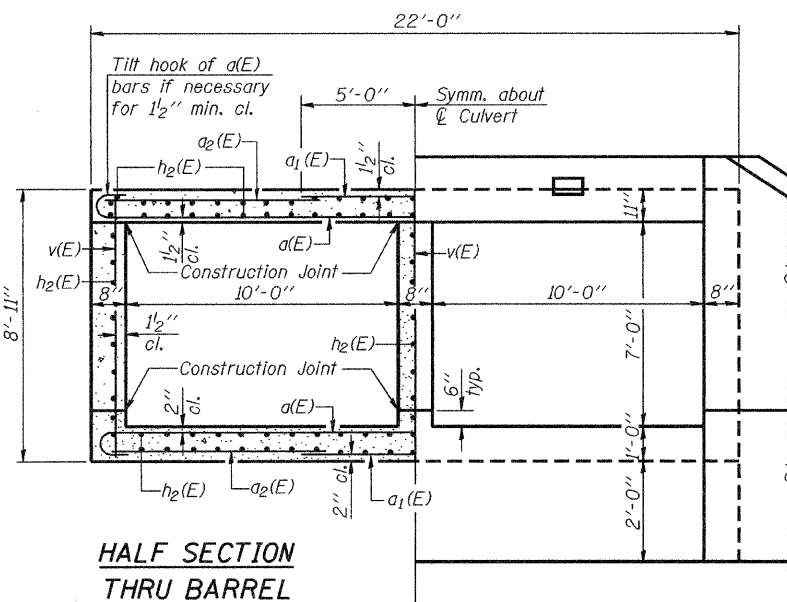


STATE OF ILLINOIS
DEPARTMENT OF TRANSPORTATION



ELEVATION VIEW
(Showing Expansion Bolts)
Expansion Bolts shall be 12" long.



**HALF SECTION
THRU BARREL**

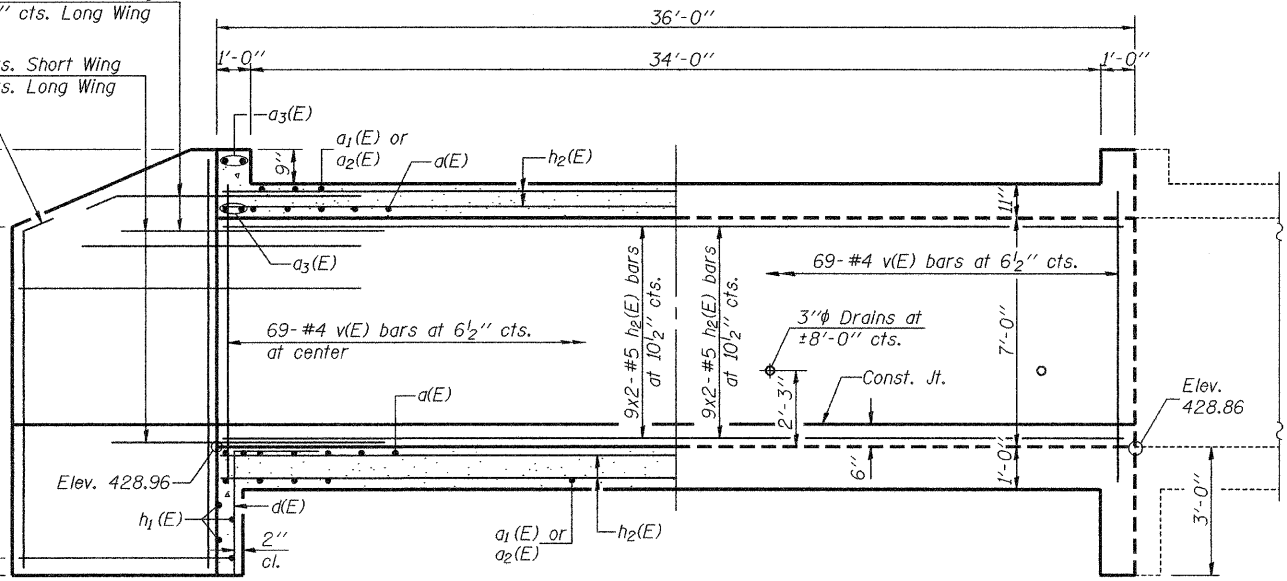
HALF END ELEVATION

Notes: A distance of half the length of the wingwall but not less than six feet of the barrel shall be poured monolithically with the wingwalls.
Bars indicated thus 12x4-#5 etc. indicates 12 lines of bars with 4 lengths per line.

(Back)
5-#8 h₃(E) bars at 10" cts. Short Wing
5-#8 h₄(E) bars at 10" cts. Long Wing
(Front)
10-#8 h₃(E) bars at 10" cts. Short Wing
10-#8 h₄(E) bars at 10" cts. Long Wing

Bend in Field, typ.

Back Long Wing 10-#8 h₅(E) bars at 10" cts.
Back Short Wing 10-#8 h₆(E) bars at 10" cts.



HALF LONG SECTION

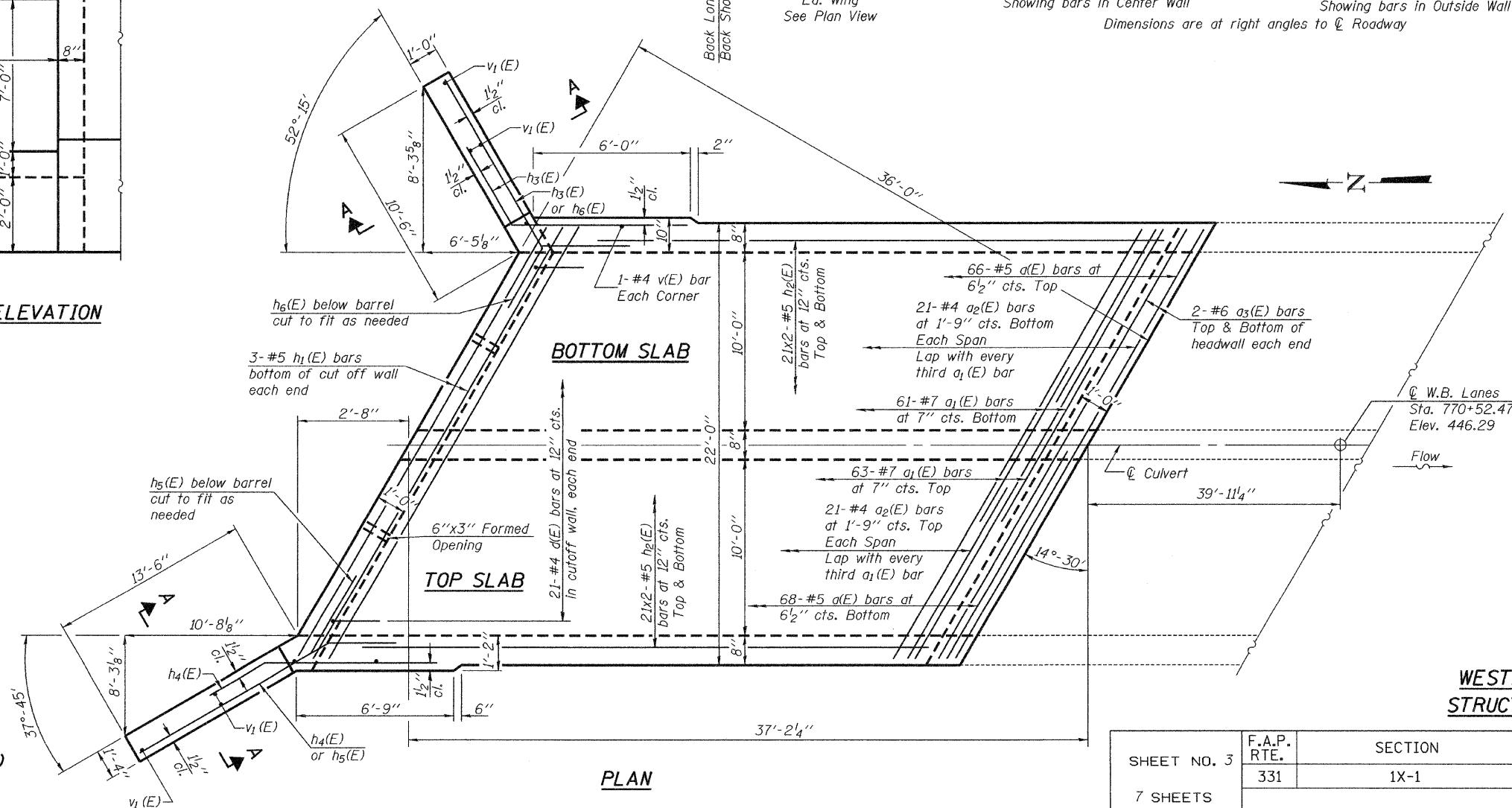
Showing bars in Center Wall
Dimensions are at right angles to \bar{C} Roadway

HALF ELEVATION

Showing bars in Outside Wall

MIN. BAR LAP

#4 bar = 1'-8"



BOTTOM SLAB

TOP SLAB

PLAN

DESIGNED Patrick M. Petrone
CHECKED Jay D. Edwards
DRAWN BECKY M. LEACH
CHECKED PMP/JDE

JUNE 10, 2009
EXAMINED Thomas J. Domagala
PASSED Robert E. Anderson
ENGINEER OF BRIDGES AND STRUCTURES

**WESTBOUND EXTENSION
STRUCTURE NO. 100-2007**

SHEET NO. 3 7 SHEETS	F.A.P. RTE.	SECTION	COUNTY	TOTAL SHEETS	SHEET NO.
	331	1X-1	WILLIAMSON	190	96
FED. ROAD DIST. NO.			ILLINOIS	FED. AID PROJECT	
			CONTRACT NO. 78053		