

## DETAIL OF DETECTOR LOOPS

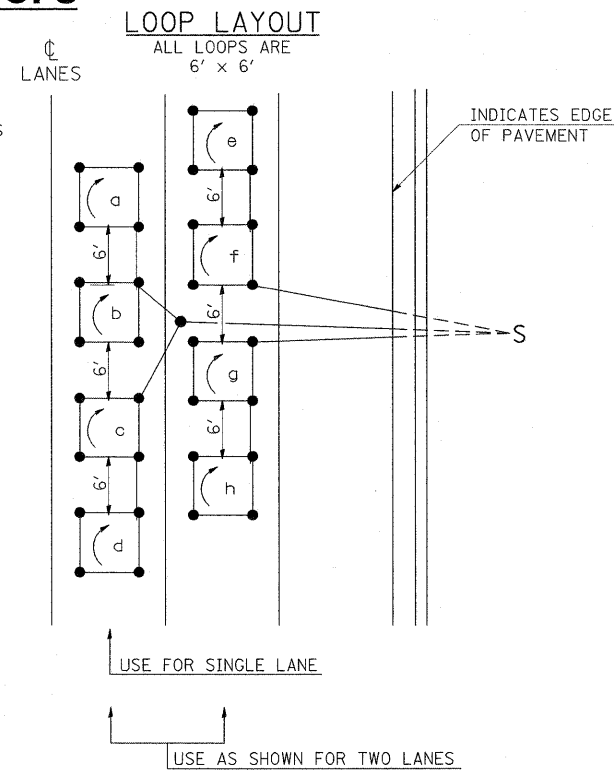
### NOTES

(APPLIES TO 6' x 6' LOOPS ONLY)

1. THE DETECTOR LOOPS SHALL BE TYPE I. EACH DETECTOR LOOP SHALL HAVE 3 TURNS OF LOOP WIRE AND BE INSTALLED IN ACCORDANCE WITH THE APPLICABLE PORTIONS OF SECTION 886 OF THE STANDARD SPECIFICATIONS FOR TRAFFIC CONTROL ITEMS.
2. BEGINNING LEAD WIRES SHALL BE CONNECTED TO THE BLACK LEAD AND THE ENDING LEAD WIRES SHALL BE CONNECTED TO THE WHITE LEAD OF THE TWIN TWISTED FEED CABLES AT THE SPLICE POINT.
3. WHERE THE LOOPS ARE INSTALLED PRIOR TO RESURFACING, THE LOOP CORNERS SHALL BE DIAGONALLY CUT.

### LOOP LEGEND

- CLOCKWISE ROTATION FOR LOOP WIRES
- INDICATES SPLICE POINT FOR DETECTOR LOOP LEAD
- INDICATES 2" CORE-DRILL

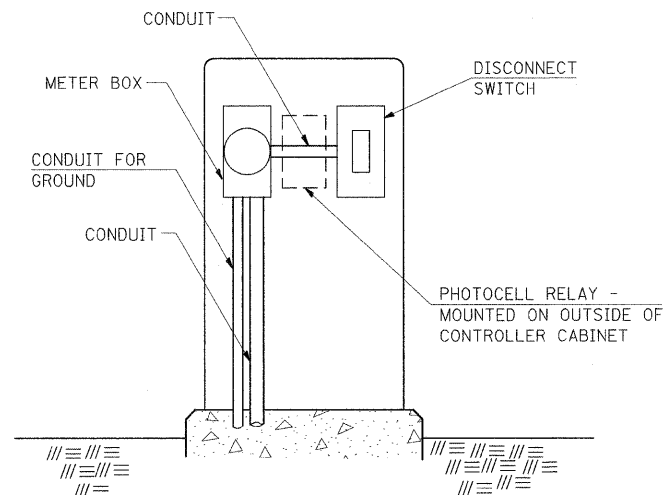


DETAIL 6' x 6' DETECTOR LOOPS

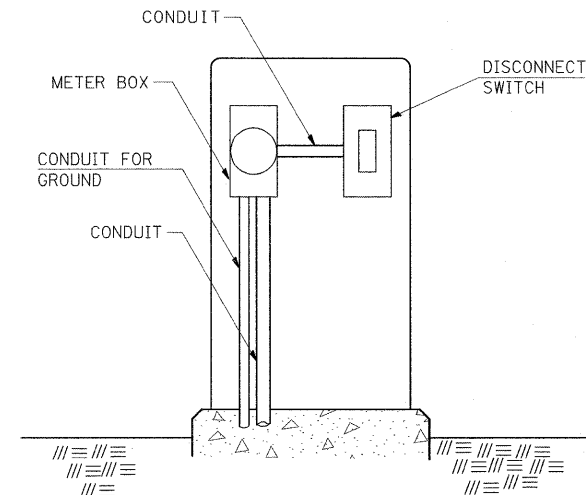
| REVISIONS |          |
|-----------|----------|
| REDRAWN   | 5-13-02  |
| REVISED   | 10-27-05 |
| REVISED   | 3-26-08  |
| REVISED   |          |

STD. 9-92

## SERVICE INSTALLATION DETAILS



SERVICE INSTALLATION (SPECIAL)  
WITH PHOTOCELL RELAY



SERVICE INSTALLATION (SPECIAL)

### NOTE:

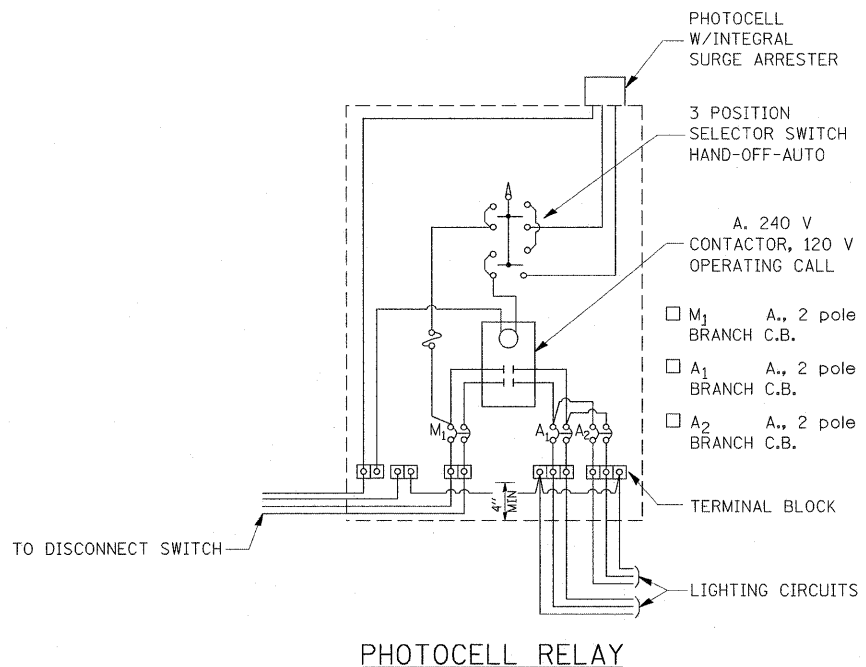
MATERIAL AND SIZE OF CONDUIT AND CABLE AS REQUIRED BY UTILITY COMPANY

| REVISIONS |         |
|-----------|---------|
| DRAWN     | 1-31-90 |
| REVISED   | 2-24-92 |
| RESIZED   | 5-7-08  |

STD. 9-68

## OUTDOOR LIGHTING CONTROL CABINET

(GROUND MOUNT CABINET ONLY)



PHOTOCELL RELAY

| REVISIONS |         |
|-----------|---------|
| DRAWN     | 5-18-90 |
| REVISED   | 5-13-02 |
| REVISED   | 3-26-08 |
| REVISED   |         |

STD. 9-76

THE PAY ITEM 'REMOVE EXISTING TRAFFIC SIGNAL EQUIPMENT' SHALL INCLUDE ALL WORK NECESSARY FOR THE REMOVAL OF THE FOLLOWING ITEMS:

|   |  |
|---|--|
| CONCRETE HANDHOLE   | STA 774+15, 26' RT (IL 13 WB)            |
| CONCRETE HANDHOLE   | STA 775+22, 24' RT (IL 13 WB)            |
| TRAFFIC SIGNAL POST & CONCRETE FOUNDATION, TYPE A                                   | STA 775+93, 20' RT (IL 13 WB)            |
| CONCRETE HANDHOLE   | STA 776+19, 20' RT (IL 13 WB)            |
| TRAFFIC SIGNAL POST & CONCRETE FOUNDATION, TYPE A                                   | STA 776+26, 19' RT (IL 13 WB)            |
| TRAFFIC SIGNAL CONTROLLER, CABINET & CONCRETE FOUNDATION, TYPE C                    | STA 776+25, 28' LT (IL 13 WB)            |
| COMBO LIGHTING & MAST ARM ASSEMBLY AND POLE, 38' & CONCRETE FOUNDATION, TYPE E, 30" | STA 776+30, 35' LT (IL 13 WB)            |
| CONCRETE DOUBLE HANDHOLE  | STA 776+36, 37' LT (IL 13 WB)            |
| CONCRETE HANDHOLE   | STA 776+56, 72' LT (IL 13 WB)            |
| TRAFFIC SIGNAL POST & CONCRETE FOUNDATION, TYPE A                                   | STA 777+07, 42' LT (IL 13 WB)            |
| TRAFFIC SIGNAL POST & CONCRETE FOUNDATION, TYPE A                                   | STA 777+09, 87' LT (IL 13 WB)            |
| MAST ARM ASSEMBLY AND POLE, 44' & CONCRETE FOUNDATION, TYPE E, 30"                  | STA 777+66, 58' LT (IL 13 WB)            |
| TRAFFIC SIGNAL POST & CONCRETE FOUNDATION, TYPE A                                   | STA 777+87, 41' LT (IL 13 WB)            |
| CONCRETE HANDHOLE   | STA 777+99, 35' LT (IL 13 WB)            |
| CONCRETE HANDHOLE   | STA 779+97, 32' LT (IL 13 WB)            |
| TRAFFIC SIGNAL POST & CONCRETE FOUNDATION, TYPE A                                   | STA 776+29, 47' RT (IL 13 EB)            |
| CONCRETE HANDHOLE   | STA 776+36, 51' RT (IL 13 EB)            |
| MAST ARM ASSEMBLY AND POLE, 44' & CONCRETE FOUNDATION, TYPE E, 30"                  | STA 776+43, 62' RT (IL 13 EB)            |
| TRAFFIC SIGNAL POST & CONCRETE FOUNDATION, TYPE A                                   | STA 776+99, 46' RT (IL 13 EB)            |
| CONCRETE HANDHOLE   | STA 776+99, 51' RT (IL 13 EB)            |
| TRAFFIC SIGNAL POST & CONCRETE FOUNDATION, TYPE A                                   | STA 776+96, 84' RT (IL 13 EB)            |
| CONCRETE HANDHOLE   | STA 777+62, 58' RT (IL 13 EB)            |
| TRAFFIC SIGNAL POST & CONCRETE FOUNDATION, TYPE A                                   | STA 777+69, 53' RT (IL 13 EB)            |
| COMBO LIGHTING & MAST ARM ASSEMBLY AND POLE, 44' & CONCRETE FOUNDATION, TYPE E, 30" | STA 777+85, 43' RT (IL 13 EB)            |
| CONCRETE HANDHOLE   | STA 777+97, 20' LT (IL 13 EB)            |
| CONCRETE HANDHOLE   | STA 779+06, 25' LT (IL 13 EB)            |
| CONCRETE HANDHOLE   | STA 02+46, 46' LT (WALTON WAY)           |
| CONCRETE HANDHOLE   | STA 01+91, 11' LT (WILLIAMSON CO. PKWY.) |

|   |                       |            |           |
|---|-----------------------|------------|-----------|
| FILE NAME =   | USER NAME = russellcf | DESIGNED - | REVISED - |
| ci:\pw_work\p\idot\russellcf\dms43738\d9-78053-ts-sh.tdgn |                       | DRAWN -    | REVISED - |
| PLOT SCALE = 3/8" = 1' / IN.                              |                       | CHECKED -  | REVISED - |
| PLOT DATE = 5/5/2009                                      |                       | DATE -     | REVISED - |

**STATE OF ILLINOIS  
DEPARTMENT OF TRANSPORTATION**

**TRAFFIC SIGNAL DETAILS**

SHEET NO. OF SHEETS STA. TO STA.

| F.A.P. RTE.                                   | SECTION                 | COUNTY     | TOTAL SHEETS | SHEET NO. |
|---|-------------------------|------------|--------------|-----------|
| 331   | SEC. NO. 01X-1N-1, TS-2 | WILLIAMSON | 190          | 105       |
| CONTRACT NO. 78053                            |                         |            |              |           |
| FED. ROAD DIST. NO. ILLINOIS FED. AID PROJECT |                         |            |              |           |