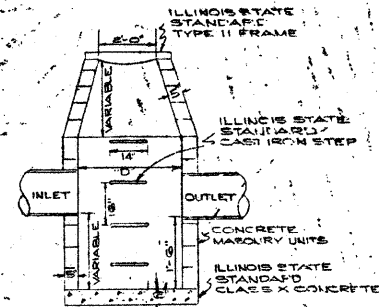
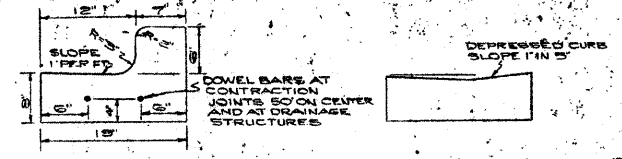


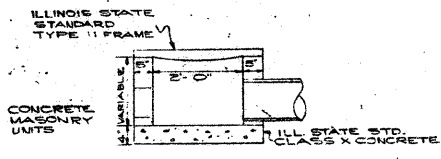
Sheet 114
Contract
83827



TYPICAL CATCH BASIN DETAIL
NO SCALE
D=48" FOR 10" - 24" STORM SEWER
D=60" FOR 27" OR LARGER



CURB & GUTTER CONSTRUCTION IN ACCORDANCE WITH SEC. 503 ILLINOIS STATE STANDARD SPECIFICATIONS
TYPE B&E MODIFIED
CURB & GUTTER DETAIL
NO SCALE



TYPICAL INLET DETAIL
NO SCALE

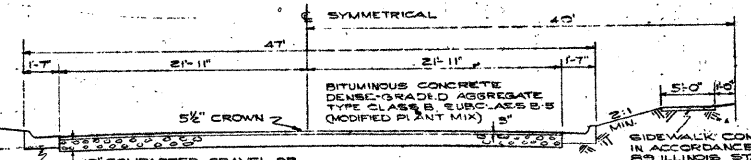
JEFFERSON AVENUE BRIDGE
1961
CITY OF NAPERVILLE
WILLIAM G. ZAININGER, MAYOR

COMMISSIONERS
OWEN H. BEIDELMAN
WARD C. SHIFFLER
ROLLIN G. TAECKER
JAMES A. WEHRLI

COUNTY OF DU PAGE
O.B. DOLD, SUPERINTENDENT OF HIGHWAYS
(LOADING H20-S16)

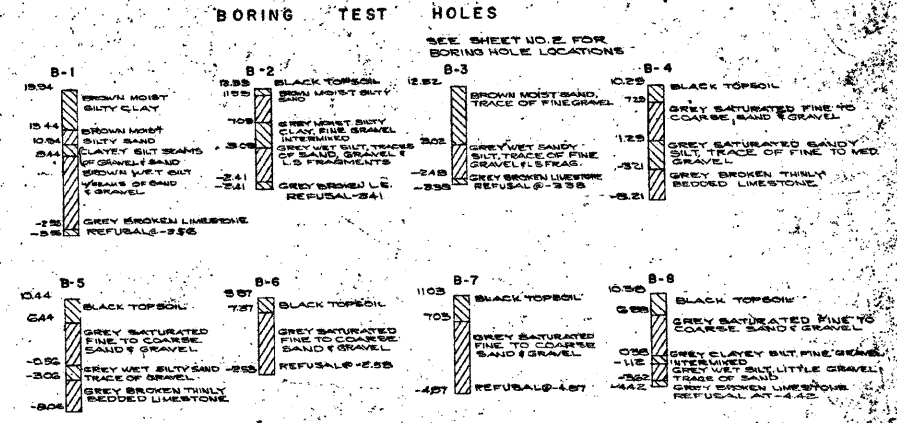
NAME PLATE TO BE PLACED ON NORTHEAST SIDE OF BRIDGE ON HAND-RAIL FACING E. OF BRIDGE IN ACCORDANCE WITH ILL. STATE STD. 2113

BRIDGE NAME PLATE
ILL. STD. 2113 (MODIFIED)



TYPICAL STREET SECTION
NO SCALE

NOTE: PLACE BITUMINOUS PRE-MOLDED JOINT FILLER AT CURB & DRIVEWAY TRANSITIONS INCIDENTAL TO SIDEWALK CONSTRUCTION



GENERAL NOTES

- IMPROVEMENT ADJUSTMENTS AS DIRECTED BY ENGINEER
- ELEVATION 100.00 CITY OF NAPERVILLE CITY DATUM & 753.64 USGS JUNE, 1960
- DEPRESSED CURBING TO BE PLACED AS INDICATED BY FIELD ENGINEER TO PROVIDE ACCESS TO EXISTING LOTS

LEGEND

- PROPOSED PAVEMENT
- PROPOSED CURB LINE
- PROPOSED INLET
- PROPOSED CATCH BASIN
- PROPOSED STORM SEWER
- EXISTING PAVEMENT LINE
- TREE
- TREE STUMP
- EXISTING MANHOLE
- EXISTING SANITARY SEWER
- EXISTING WATER MAIN

1920 Cu.Yd. Earth Excavation	2195 Cu.Yd. Channel Excavation
2000 Cu.Yd. Borrow Excavation	1 Each Name Plate
2958 Ton Gravel or Crushed Stone Base Course Type B	190 Cu.Yd. Class A Excavation for Structures
1778 Gal. Bituminous Materials Prime Coat	327 Cu.Yd. Class B Excavation for Structures
829 Ton Cover Coat Mixture Complete (Bituminous Concrete Dense Graded Aggregate Type B, Sub-Class B-5)	430 Cu.Yd. Class X Concrete
87 Cu.Yd. French Backfill	5850 Sq.Ft. Precast Prestressed Concrete Bridge Deck
1555 Lin.Ft. P.C.C. Combination Curb & Gutter Type B, Modified	240 Cu.Yd. Porous Granular Embankment
7800 Sq.Ft. P.C.C. Sidewalk - 1"	1689 Lb. Reinforcement Bars
90 Lin.Ft. Storm Sewer Type 2 - 10"	826 Lin.Ft. Punishing Steel Piles
106 Lin.Ft. Storm Sewer Type 2 - 12"	827 Lin.Ft. Driving Steel Piles
75 Lin.Ft. Storm Sewer Type 2 - 18"	303 Lin.Ft. Punishing & Erecting Aluminum Handrail
585 Lin.Ft. Storm Sewer Type 2 - 24"	190 Cu. Yd. Topsoil
2 Each Inlet, Type A with Type II Frame	1 Acre Temporary Seeding
2 Each Catch Basin Type C with Type II Frame	110 In.Dia. Tree Removal, 6"-15" Dia. Special
2 Each Catch Basin Type A with Type II Frame	150 In.Dia. Tree Removal, over 15" Dia. Special

WIGHT AND COMPANY
CONSULTING ENGINEERS
BARRINGTON, ILLINOIS

PROJECT NO. 83827
DRAWN BY S.V.V.
BOOK NO. 83827
DATE 6-14-61
CHECKED BY D.T.J.
APPROVED BY G.V.V.
SHEET NO. 10 OF 10