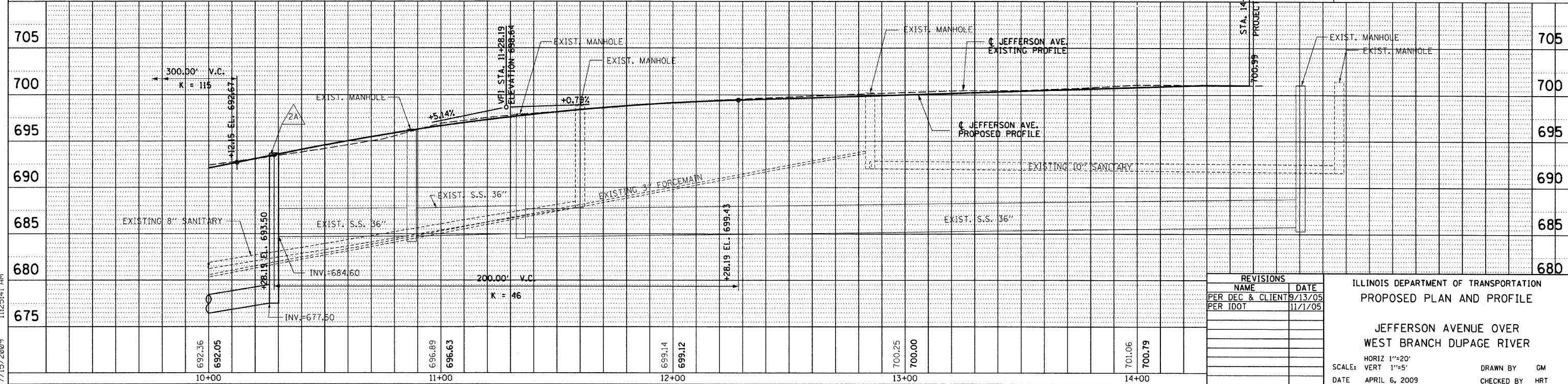
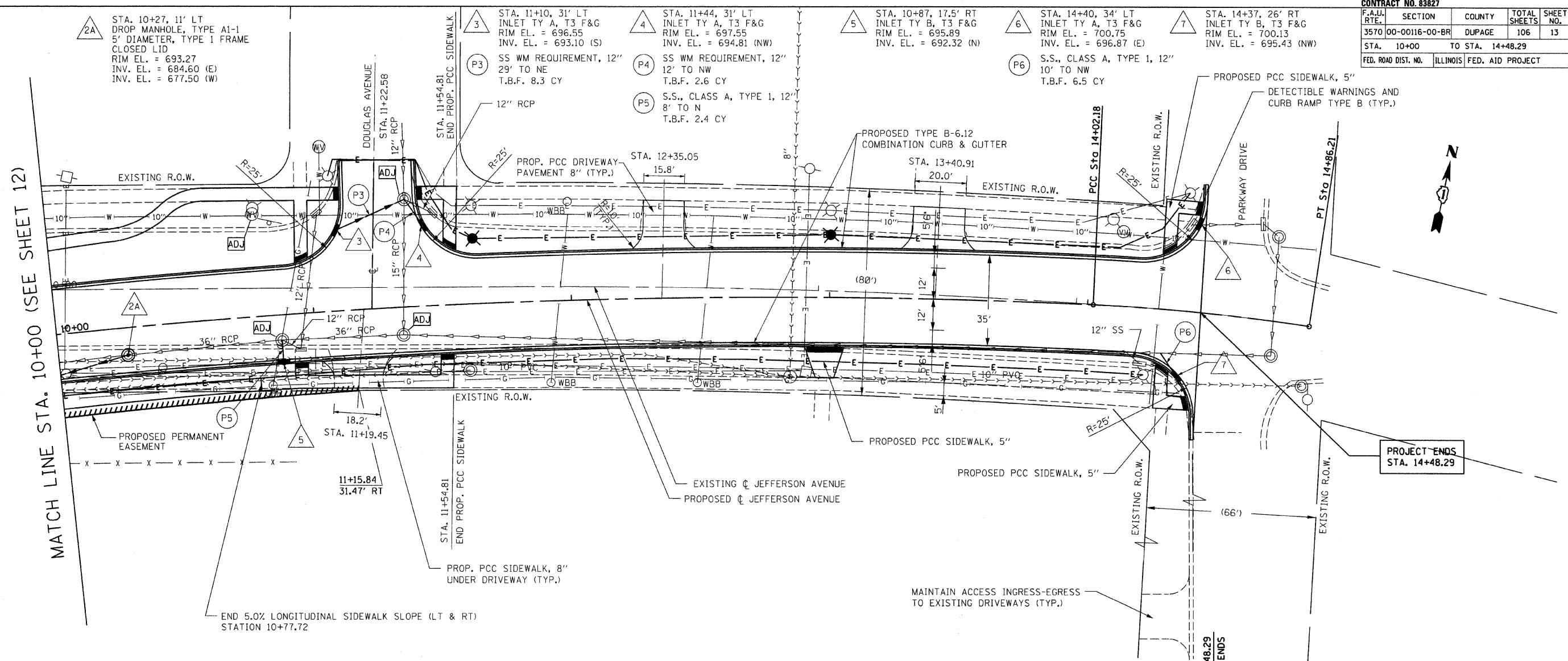


CONTRACT NO. 83827				
F.A.U. RTE.	SECTION	COUNTY	TOTAL SHEETS	SHEET NO.
3570	00-00116-00-BR	DUPAGE	106	13
STA.	10+00	TO STA.	14+48.29	
FED. ROAD DIST. NO.	ILLINOIS	FED. AID PROJECT		

DATE	
BY	
PLAN	
NO.	
DATE	
BY	
PROFILE	
NO.	

DATE	
BY	
PROFILE	
NO.	

W:\058-030 & 058-032 Jefferson Revisions 09\CADD Sheets\JEFFERSON AVE WEST BRANCH DUPAGE RIVER.dwg
7/15/2009



REVISIONS	
NAME	DATE
PER DEC & CLIENT	9/13/05
PER IDOT	11/1/05

ILLINOIS DEPARTMENT OF TRANSPORTATION
PROPOSED PLAN AND PROFILE
 JEFFERSON AVENUE OVER
 WEST BRANCH DUPAGE RIVER
 HORIZ 1"=20'
 SCALE: VERT 1"=5'
 DATE APRIL 6, 2009
 DRAWN BY GM
 CHECKED BY HRT