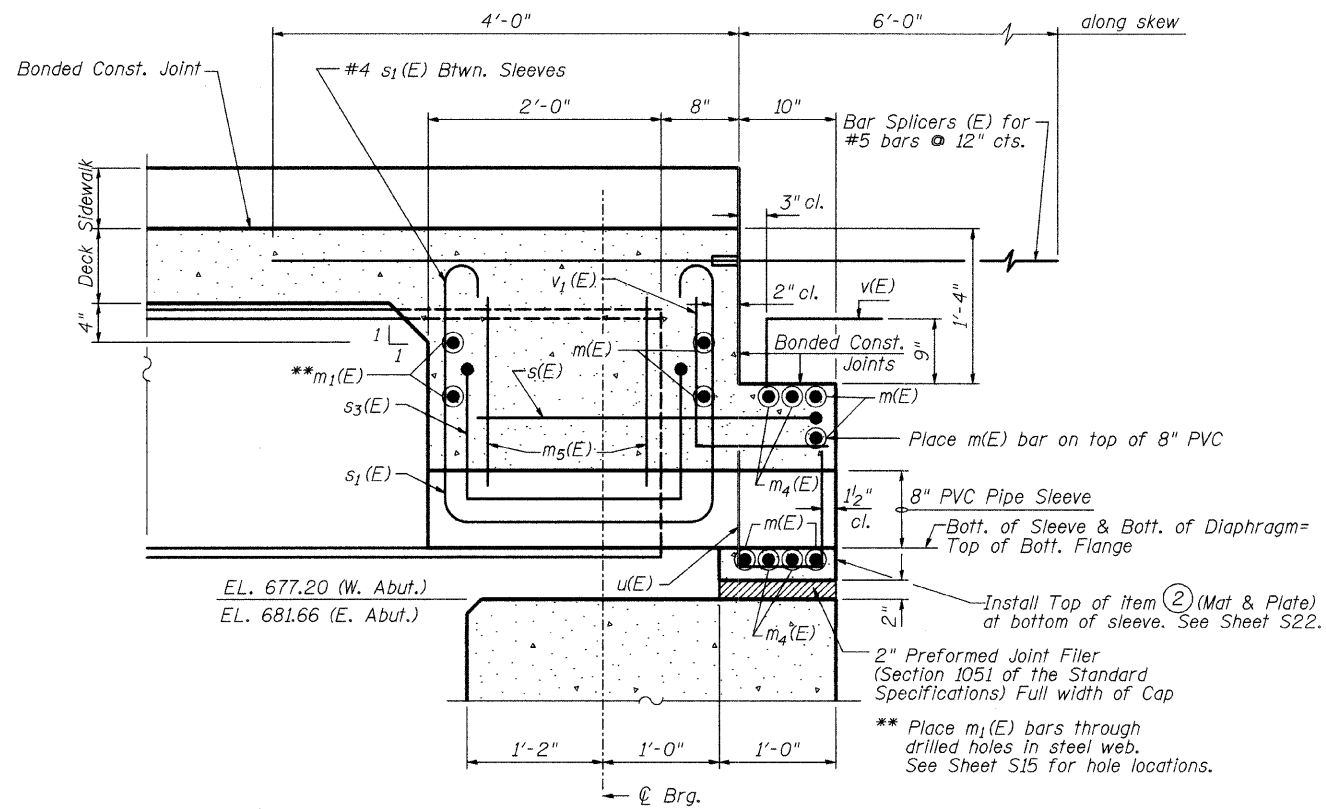


ROUTE NO.	SECTION	COUNTY	TOTAL SHEETS	SHEET NO.	SHEET NO. S10 of S34 SHEETS
#	DUPAGE	106	31		
FED. ROAD DIST. NO. 7		ILLINOIS	FED. AID PROJECT-		

* 00-00116-00-BR



SECTION C-C

(Dim. at Rt. L's except as noted)
(For details of diagrams not shown see Section A-A)
Cut 2-m(E) bars that interfere with sleeves to fit.
See Section A-A, Sht. S9.

*** Place $m_1(E)$ bars through drilled holes in steel web. See Sheet S15 for hole locations.

2-#4 $s_1(E)$ bars, Typ. Each End

2-#5 $s(E)$ bars, Typ. Each End

1/4" fillet at wingwall

2" P.J.F. ****

2-Layers of 6 mil thick polyethylene See Sheet S29 for add'l. details

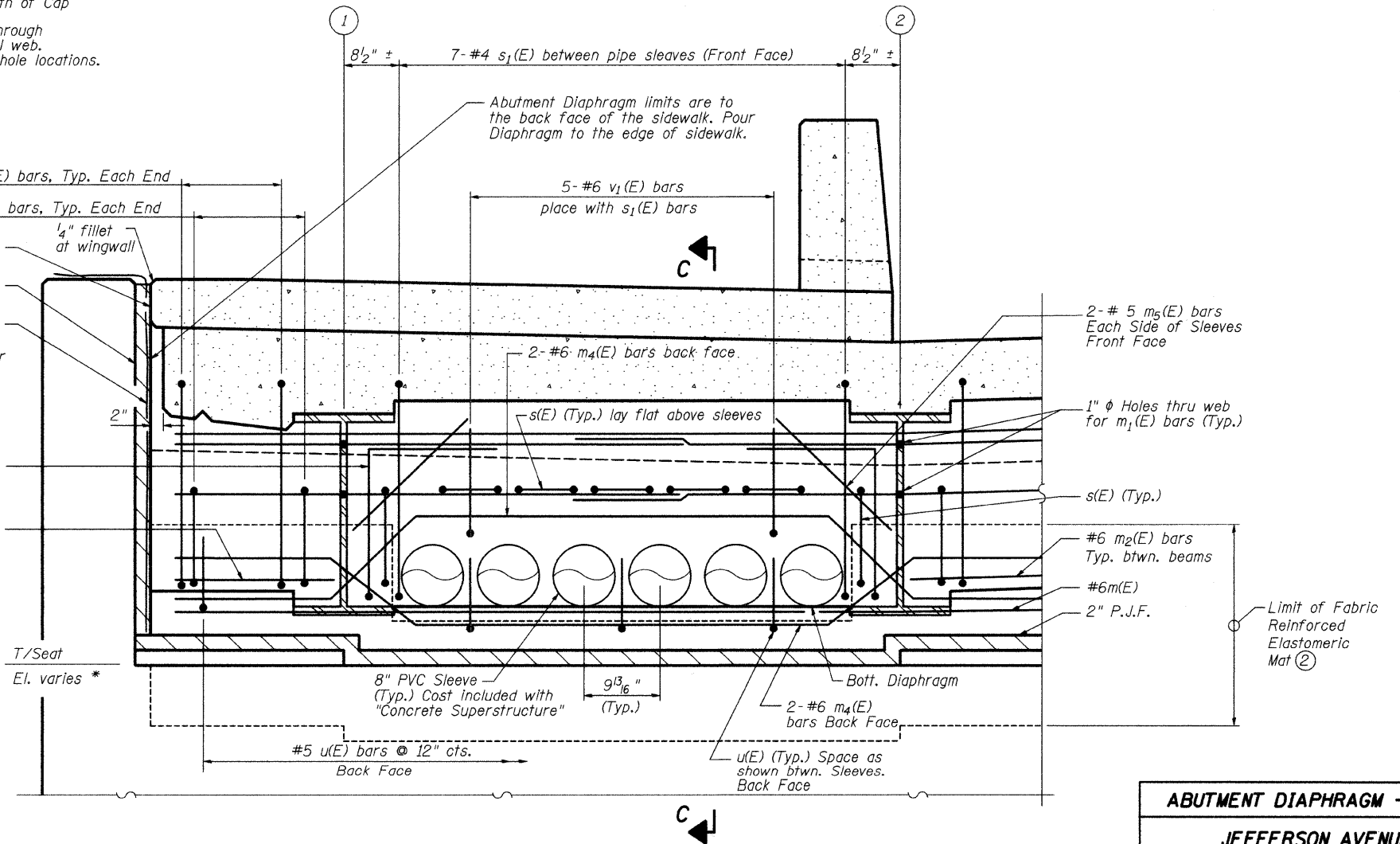
1-#6 $s_3(E)$ bars Each Side of Sleeves

2-#6 $m_3(E)$ bars Each End

*** Provide items ② & ④ as shown on Abutment details sheet behind 2" P.J.F. See Section B-B and Sheets S29. Cost included with Concrete Superstructure.

**** 2" Preformed Joint Filler. Polyurethane Bonded Recycled Rubber conforming with the requirements of AASHTO M 153, Type IV.

Attach all layers of P.J.F. with adhesive, fasteners not allowed. Adhesive shall be supplied and/or approved by the P.J.F. manufacturer. Face of P.J.F. shall be true and flat, depressions or gaps shall be filled flush with face of P.J.F. with an approved patching material.



ABUTMENT DIAPHRAGM ELEVATION - NORTH END

(Bearings and Bars Billed on Superstructure Plan not shown for clarity)

ABUTMENT DIAPHRAGM - NORTH END

JEFFERSON AVENUE OVER
WEST BRANCH DUPAGE RIVER
FAU 3570 SECTION 00-00116-00-BR
DUPAGE COUNTY
STA. 7+64.45
STRUCTURE NUMBER 022-6756

MIN. BAR LAP

#6 bar = 2'-9"

DESIGNED	SRT
CHECKED	JJI
DRAWN	GM
CHECKED	JJI

SI-DS2 4-30-99