

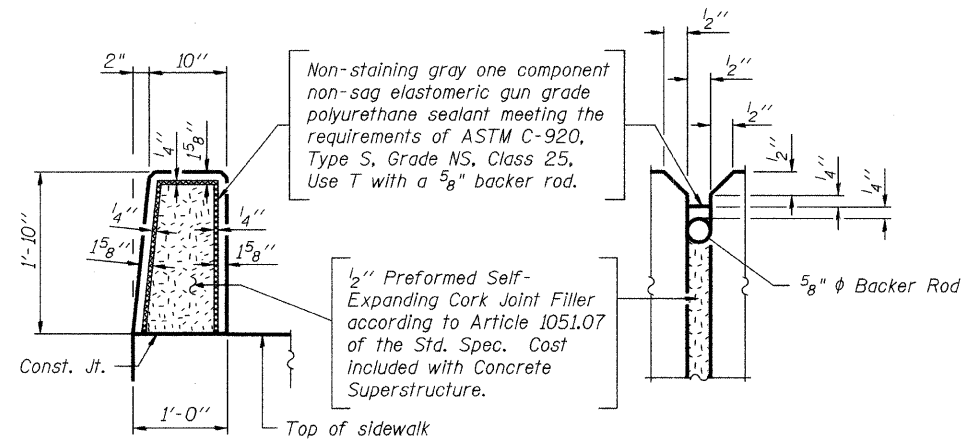
STATE OF ILLINOIS
DEPARTMENT OF TRANSPORTATION

CONTRACT NO. 83827

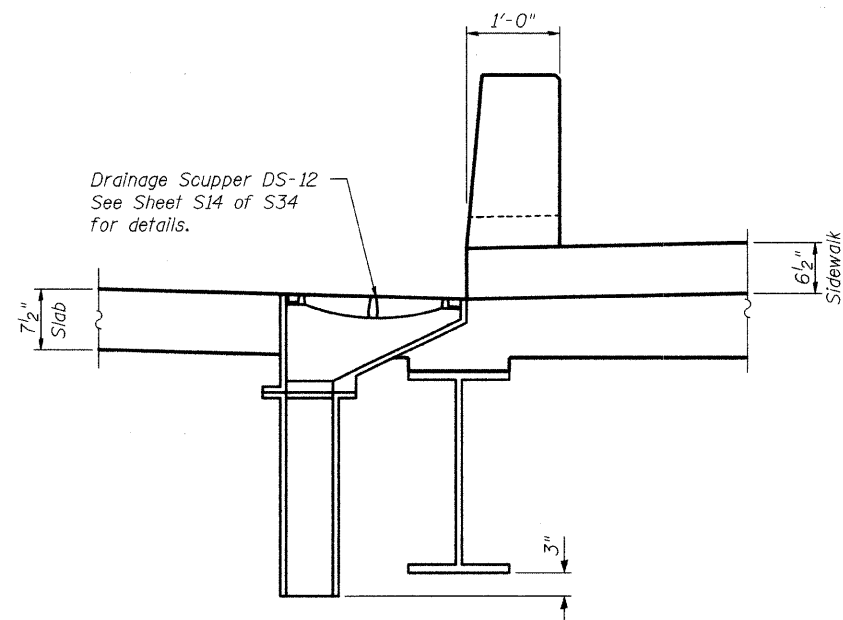
ROUTE NO.	SECTION	COUNTY	TOTAL SHEETS	SHEET NO.
		DUPAGE	106	32
FED. ROAD DIST. NO. 7		ILLINOIS FED. AID PROJECT-		

SHEET NO. S11
of S34 SHEETS

* 00-00116-00-BR

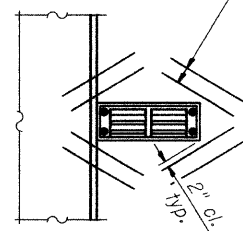


PEDESTRIAN SCREEN JOINT DETAILS

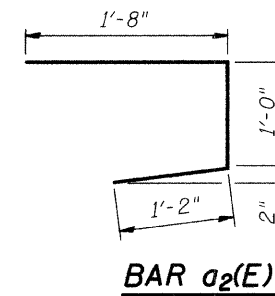


SECTION THROUGH PEDESTRIAN SCREEN
(Showing DS-12 Scupper)

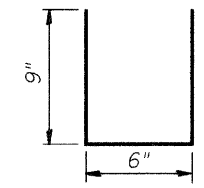
2- #5 a₃(E) bars (2'-0" lg.)
at 4" cts. tied to bottom of
top reinforcement mat. (typ.)



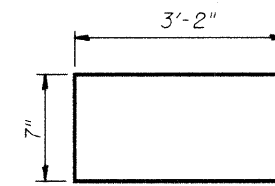
DETAIL "A"
(See Sheet S6 of S34)



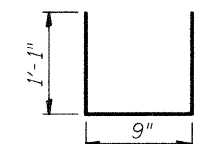
BAR a₂(E)



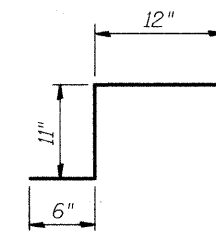
BAR d₂(E)



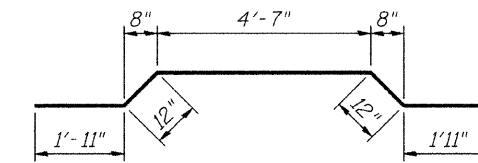
BAR s(E)



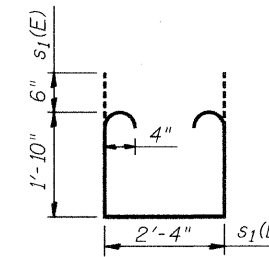
BAR u(E)



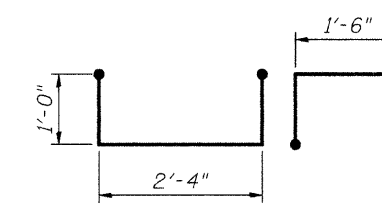
BAR c(E)



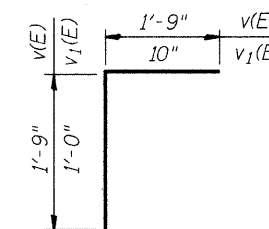
BAR m₄(E)



BAR s₁(E)



BAR s₃(E)



BAR v(E), v₁(E)

**SUPERSTRUCTURE
BILL OF MATERIAL**

Bar	No.	Size	Length	Shape
a(E)	426	#5	30'-0"	—
a ₁ (E)	424	#5	23'-3"	—
a ₂ (E)	308	#5	3'-10"	┌
a ₃ (E)	48	#5	2'-0"	—
a ₄ (E)	4	#5	27'-0"	—
b(E)	450	#5	26'-11"	—
b ₁ (E)	104	#6	28'-0"	—
b ₂ (E)	308	#5	23'-4"	—
c(E)	308	#5	2'-5"	┌
c ₁ (E)	308	#5	7'-9"	—
d(E)	308	#4	3'-5"	┌
d ₁ (E)	308	#6	3'-9"	┌
d ₂ (E)	68	#4	2'-0"	┌
e(E)	48	#4	18'-9"	—
e ₁ (E)	48	#4	6'-9"	—
e ₂ (E)	36	#4	16'-0"	—
m(E)	32	#6	27'-7"	—
m ₁ (E)	36	#6	8'-9"	—
m ₂ (E)	28	#6	5'-8"	—
m ₃ (E)	8	#6	1'-9"	—
m ₄ (E)	8	#6	10'-5"	┌
m ₅ (E)	8	#5	1'-5"	┌
s(E)	120	#5	6'-11"	┌
s ₁ (E)	106	#4	7'-0"	┌
s ₂ (E)	12	#4	5'-10"	┌
s ₃ (E)	4	#6	7'-4"	┌
u(E)	106	#5	2'-11"	┌
v(E)	106	#5	3'-6"	┌
v ₁ (E)	10	#6	2'-0"	┌
Bridge Deck Grooving	Sq. Yd.		581	
Protective Coat	Sq. Yd.		983	
Reinforcement Bars, Epoxy Coated	Pound		60,740	
Concrete Superstructure	Cu. Yd.		283.6	
Bar Splicers	Each		106	

Reinforcement bars designated (E) shall be epoxy coated.

SUPERSTRUCTURE DETAILS AND BAR LIST

JEFFERSON AVENUE OVER
WEST BRANCH DUPAGE RIVER
FAU 3570 SECTION 00-00116-00-BR
DUPAGE COUNTY
STA. 7+64.45
STRUCTURE NUMBER 022-6756

DESIGNED	SRT
CHECKED	JJI
DRAWN	GM
CHECKED	JJI

B Bollinger, Lech & Associates, Inc.