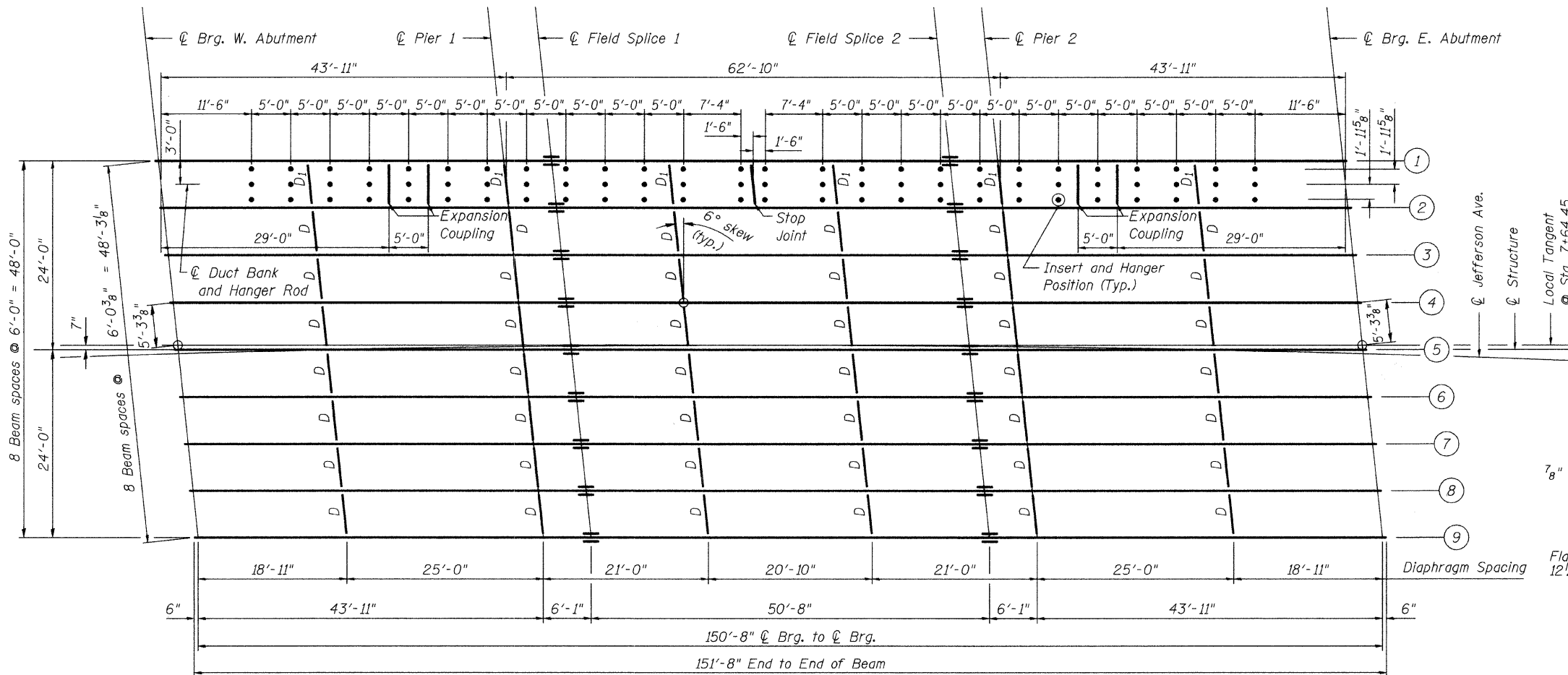
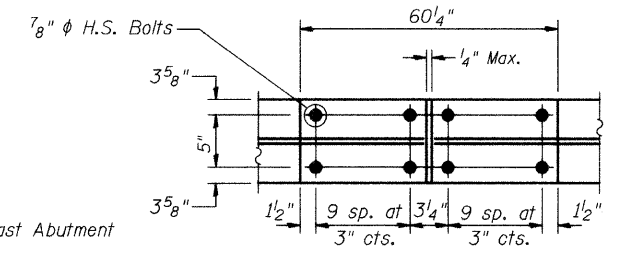
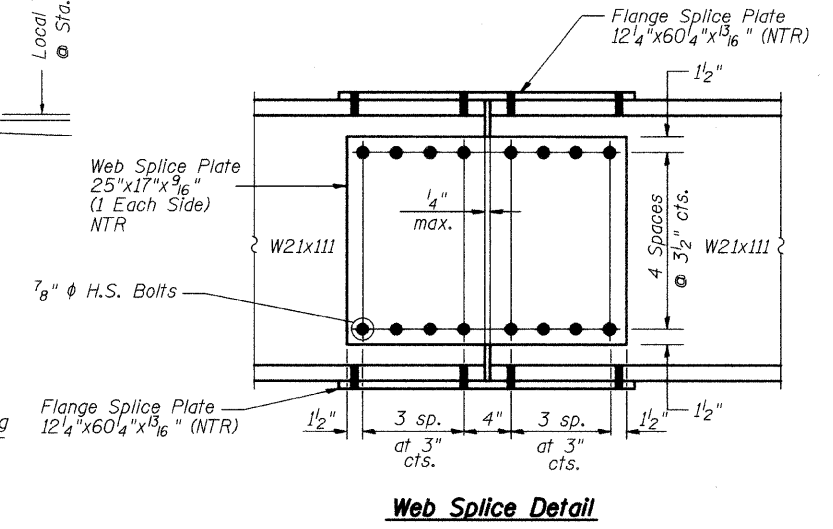


STATE OF ILLINOIS
DEPARTMENT OF TRANSPORTATION

ROUTE NO.	SECTION	COUNTY	TOTAL SHEETS	SHEET NO.
*		DUPAGE	106	36
SHEET NO. S15 of S34 SHEETS				
FED. ROAD DIST. NO. 7	ILLINOIS	FED. AID PROJECT		
* 00-00116-00-BR				



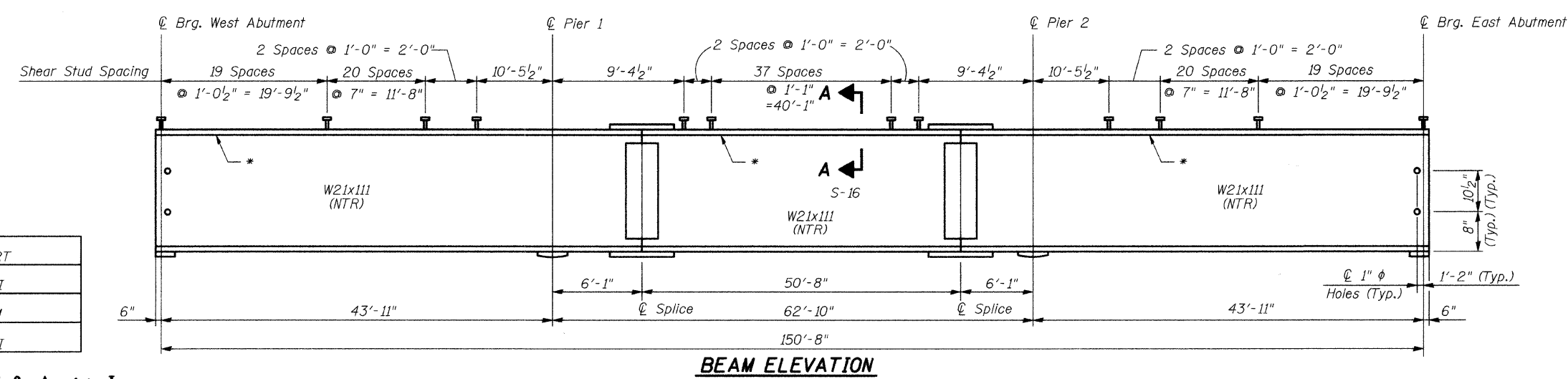
NOTES:
Structural Steel for Beams and Splice Plates shall conform to the requirements of AASHTO M270 Grade 50W. Load carrying components designated "NTR" shall conform to the Supplemental Requirements for Notch Toughness, Zone 2. See Electrical plans for hanger, inserts, bracing locations and details.



Top & Bottom Flange Splice Detail
FIELD SPLICE DETAIL
(Total No. = 18)

* At Beams 2 and 8, relocate studs to midway between adjacent rows to allow clearance for Drainage Scupper DS-12.

FRAMING PLAN



BEAM ELEVATION

DESIGNED	SRT
CHECKED	JJI
DRAWN	GM
CHECKED	JJI

B Bollinger, Lach & Associates, Inc.

STRUCTURAL STEEL FRAMING PLAN
JEFFERSON AVENUE OVER WEST BRANCH DUPAGE RIVER
FAU 3570 SECTION 00-00116-00-BR
DUPAGE COUNTY
STA. 7+64.45
STRUCTURE NUMBER 022-6756