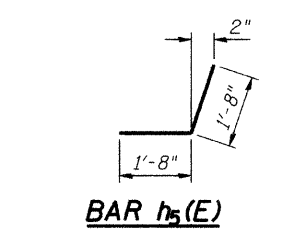
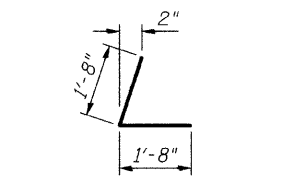
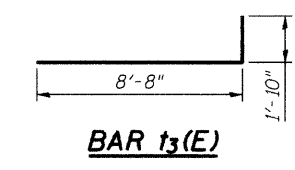
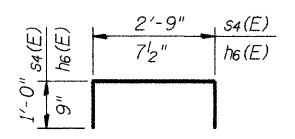
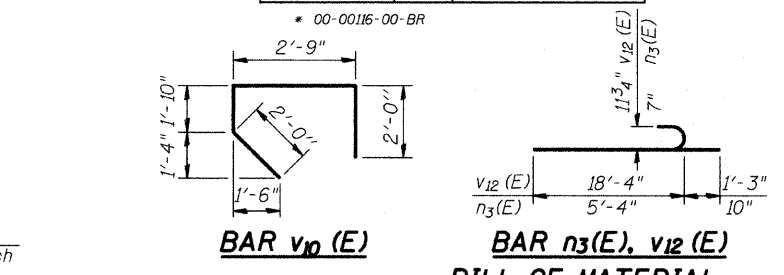
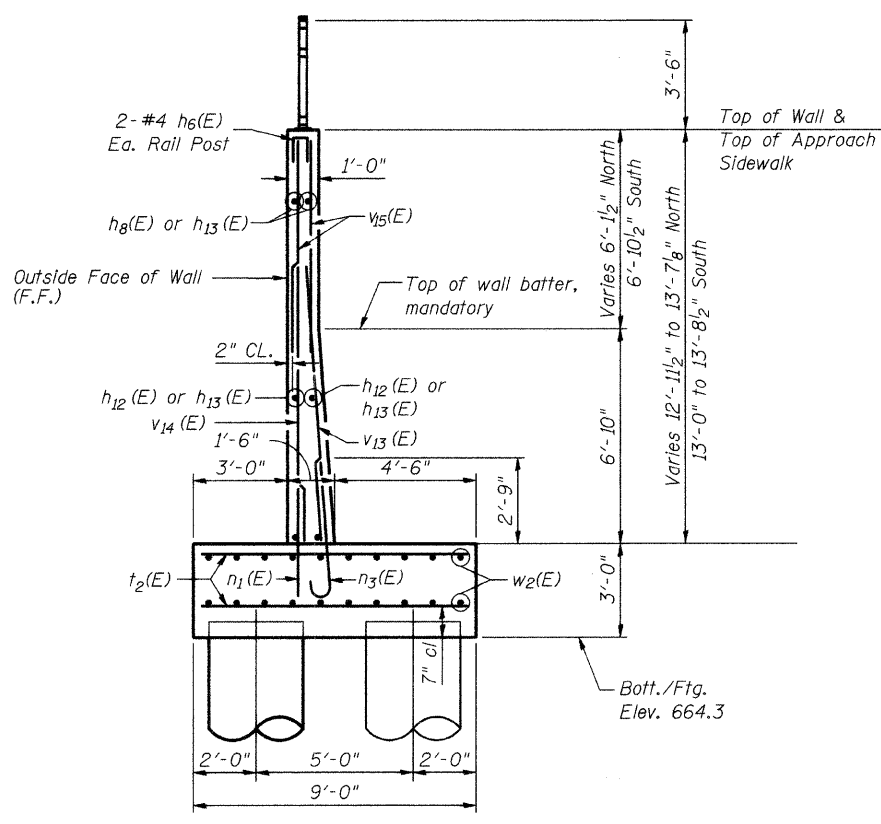
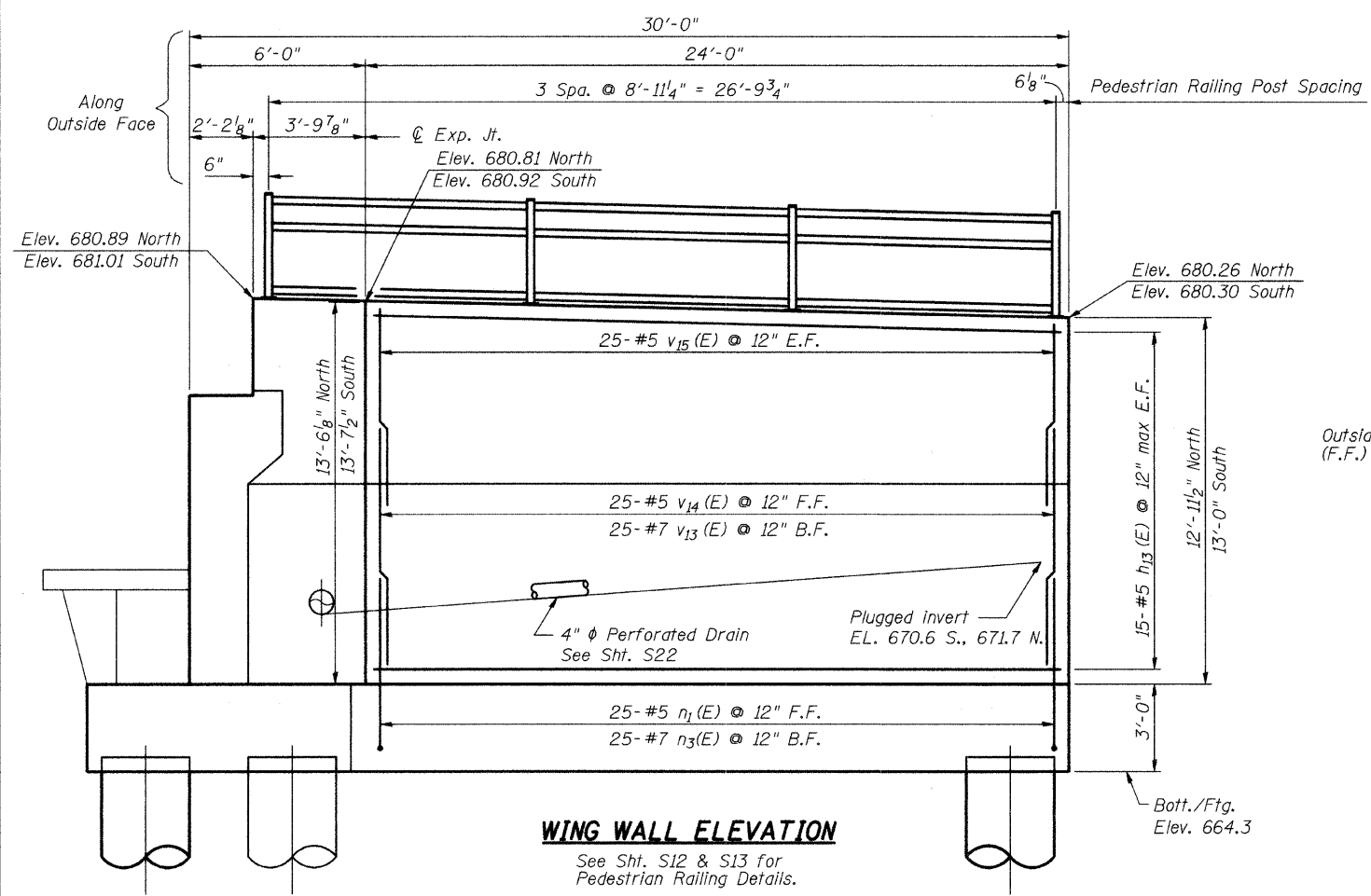
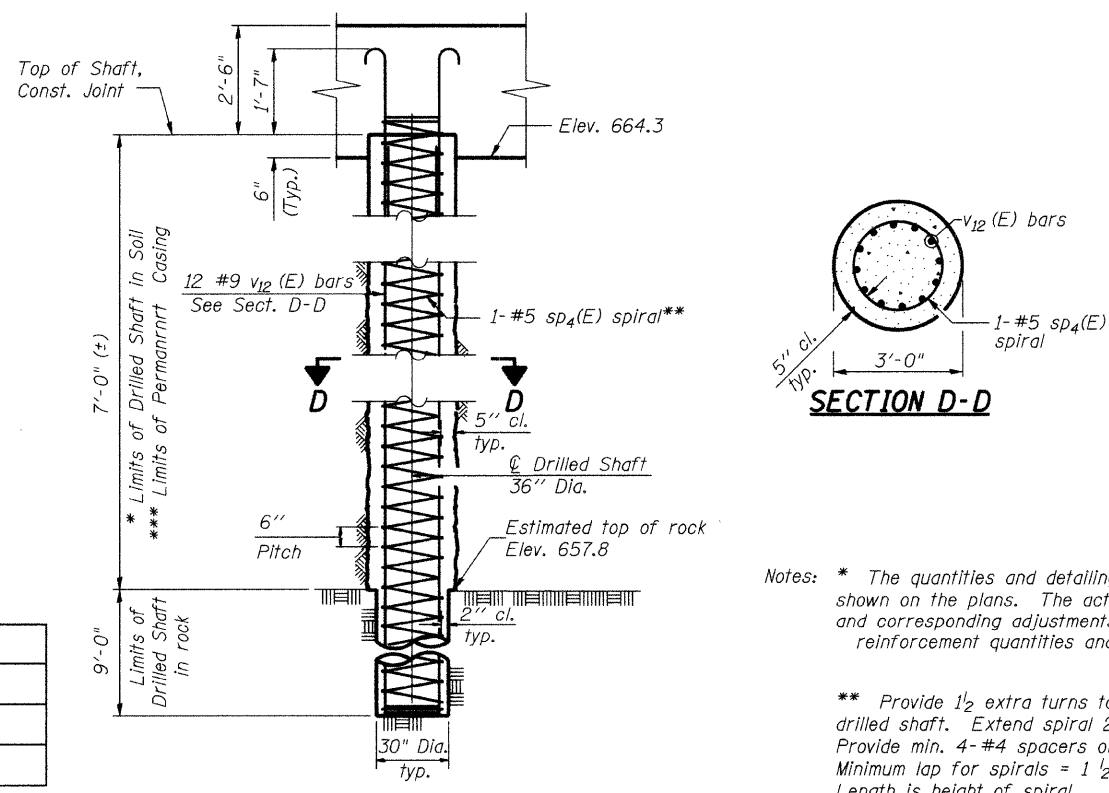
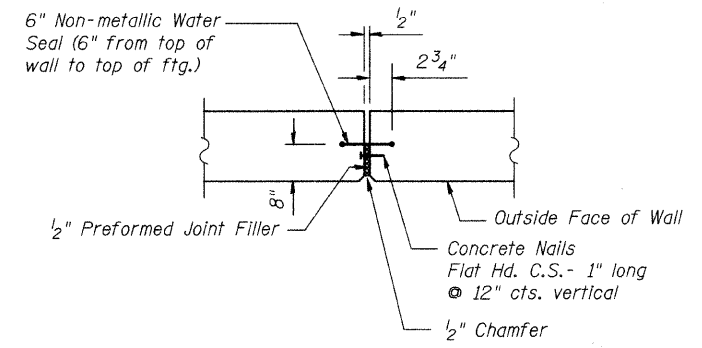


ROUTE NO.	SECTION	COUNTY	TOTAL SHEETS	SHEET NO.
#	DUPAGE	106	40	S19
of 534 SHEETS				
FED. ROAD DIST. NO. 7	ILLINOIS	FED. AID PROJECT		



BILL OF MATERIAL

Bar	No.	Size	Length	Shape
h ₂ (E)	50	#5	28'-6"	—
h ₄ (E)	22	#5	3'-4"	L
h ₅ (E)	22	#5	3'-4"	J
h ₆ (E)	16	#4	2'-2"	—
h ₈ (E)	16	#5	3'-6"	—
h ₁₁ (E)	5	#5	5'-8"	—
h ₁₂ (E)	44	#5	5'-8"	—
h ₁₃ (E)	60	#5	23'-8"	—
n ₁ (E)	120	#5	4'-6"	—
n ₂ (E)	116	#5	2'-4"	—
n ₃ (E)	113	#7	6'-2"	—
s ₄ (E)	7	#5	4'-9"	—
sp ₄ (E)	21	#5	16'-6"	—
t ₂ (E)	108	#7	8'-8"	—
t ₃ (E)	62	#10	10'-6"	—
t ₄ (E)	62	#7	8'-8"	—
v ₁₀ (E)	56	#5	8'-7"	—
v ₁₂ (E)	252	#9	19'-7"	—
v ₁₃ (E)	113	#7	9'-8"	—
v ₁₄ (E)	120	#5	9'-8"	—
v ₁₅ (E)	120	#5	7'-8"	—
w(E)	48	#6	31'-8"	—
w ₂ (E)	40	#6	27'-0"	—
Concrete Structures				Cu. Yd. 188.8
Reinforcement Bars, Epoxy Coated				Pound 42,900
Structure Excavation				Cu. Yd. 707
Underwater Structure Excavation Protection, Location 1				Each 1
Drilled Shaft in Soil				Cu. Yd. 39.3
Drilled Shaft in Rock				Cu. Yd. 34.4
Bar Splicers				Each 34
Permanent Casing				Foot 150
Pedestrian Railing				Foot 54
Pipe Drains 4"				Foot 10
Geocomposite Wall Drain				Sq. Yd. 81
Porous Granular Embankment (Special)				Cu. Yd. 310
Concrete Headwall for Pipe Drains				Each 1



Notes: * The quantities and detailing are based on the estimated elevations shown on the plans. The actual elevations may differ at each shaft and corresponding adjustments shall be made to the drilled shaft and reinforcement quantities and payment limits.

** Provide 1/2 extra turns top and bottom of each drilled shaft. Extend spiral 2" above top of shaft. Provide min. 4-#4 spacers or equivalent. Minimum lap for spirals = 1 1/2 turns. Length is height of spiral.

*** Contractor is responsible for determining the casing thickness and the actual tip elevation to be used.

Pay limits for the Permanent Casing are based on the minimum length shown.

DESIGNED	JJI
CHECKED	SRT
DRAWN	GM
CHECKED	SRT

B Bollinger, Lach & Associates, Inc.

WEST ABUTMENT DETAILS
JEFFERSON AVENUE OVER WEST BRANCH DUPAGE RIVER
FAU 3570 SECTION 00-00116-00-BR
DUPAGE COUNTY
STA. 7+64.45
STRUCTURE NUMBER 022-6756