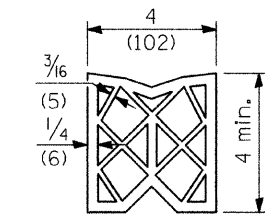
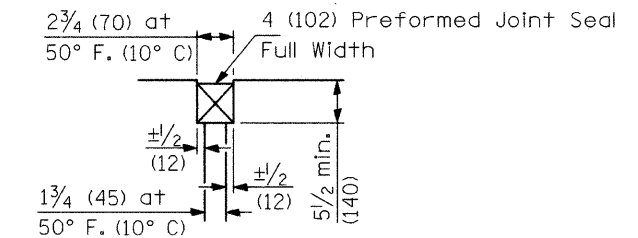


ROUTE NO.	SECTION	COUNTY	TOTAL SHEETS	SHEET NO.
		DUPAGE	106	55
FED. ROAD DIST. NO. 7		ILLINOIS	FED. AID PROJECT-	

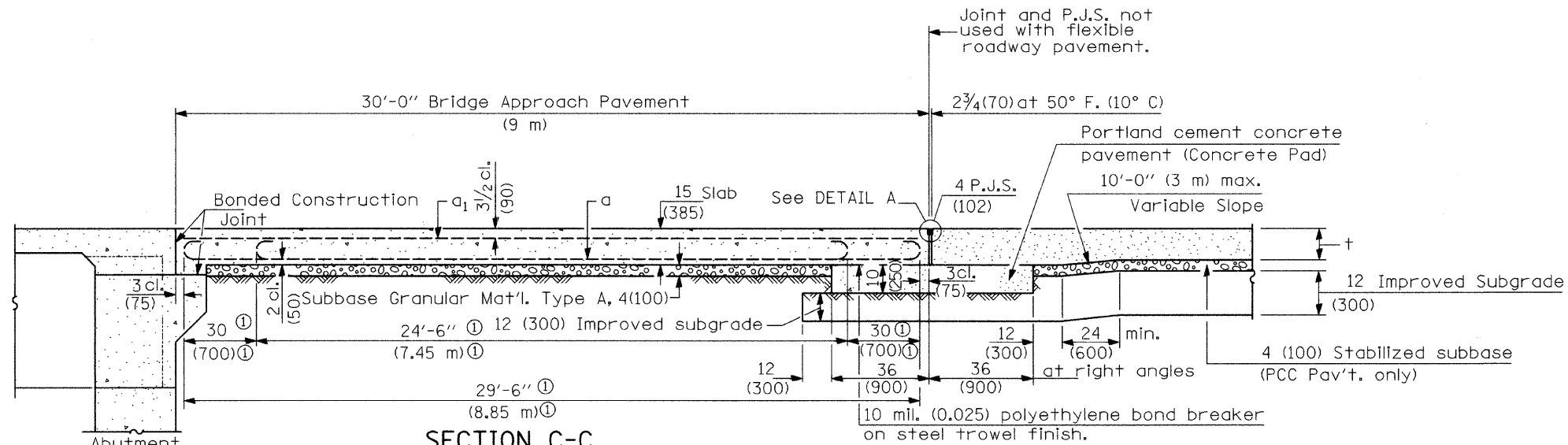
# 00-00116-00-BR



**PREFORMED JOINT SEAL**

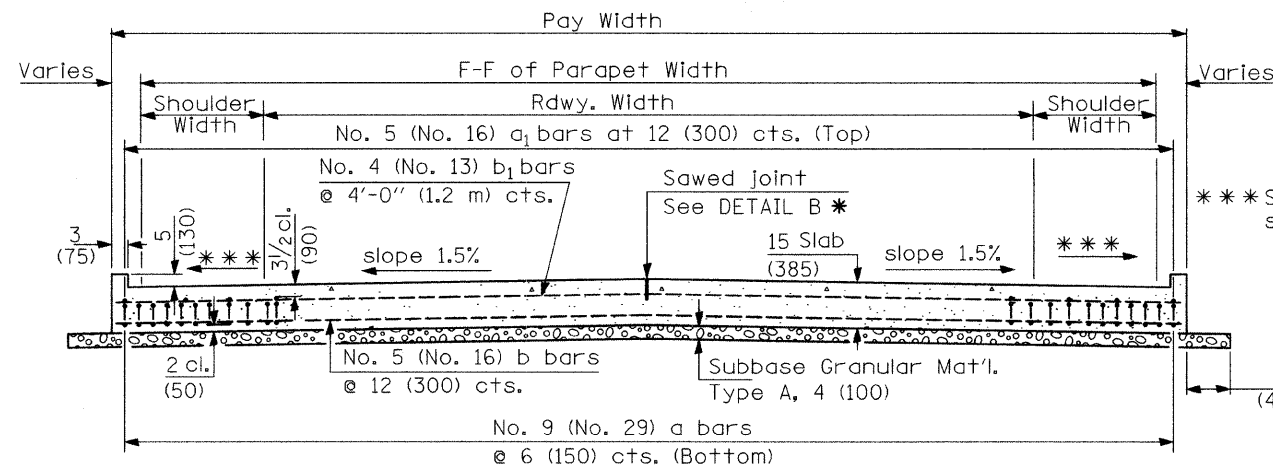


**DETAIL A**



**SECTION C-C**

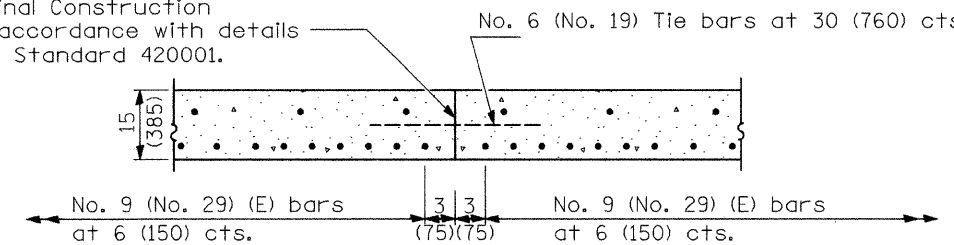
① Stagger No. 9 (No. 29) a bars as shown on plan - full width



**SECTION D-D**

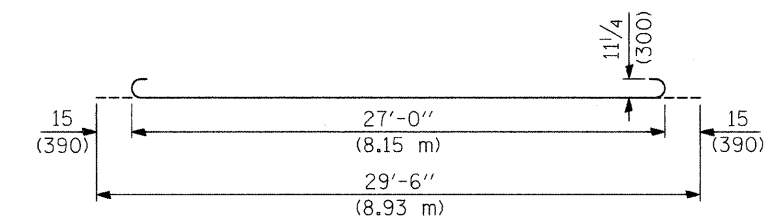
(See Plan for Dimensions not shown)

Longitudinal Construction Joint in accordance with details shown on Standard 420001.

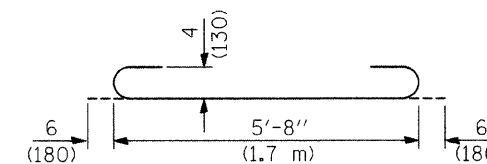


**OPTIONAL LONGITUDINAL CONSTRUCTION JOINT**

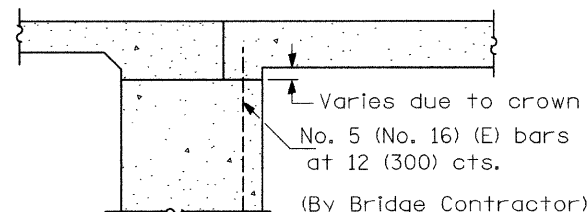
As approved by the Engineer, the Contractor may elect to reduce the widths of pour by use of the Optional Longitudinal Construction Joint shown. Joints shall be located at the edge of a traffic lane.



**BAR a**

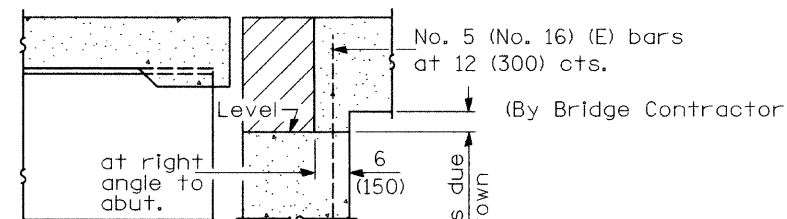


**BAR a2**



**SECTION E-E**

(Integral Abutments)



**SECTION E-E**

(Jointed Abutments)

**DESIGN STRESSES**

$f_y = 60,000$  p.s.i. (400 MPa)  
 $f'_c = 3,500$  p.s.i. (24 MPa)  
 $n = 8.5$

**BRIDGE APPROACH PAVEMENT DETAILS**

JEFFERSON AVENUE OVER  
WEST BRANCH DUPAGE RIVER  
FAU 3570 SECTION 00-00116-00-BR  
DUPAGE COUNTY  
STA. 7+64.45  
STRUCTURE NUMBER 022-6756

DESIGNED	SRT
CHECKED	JJI
DRAWN	GM
CHECKED	JJI