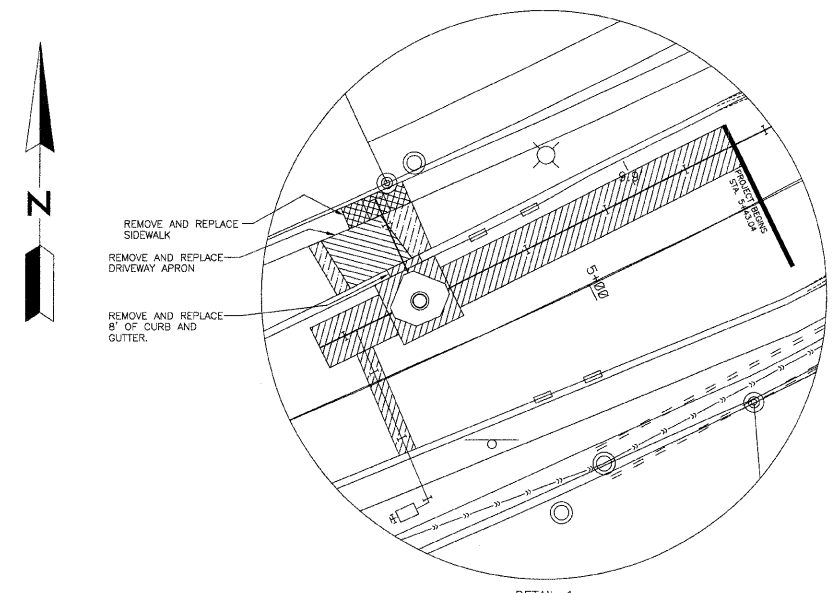
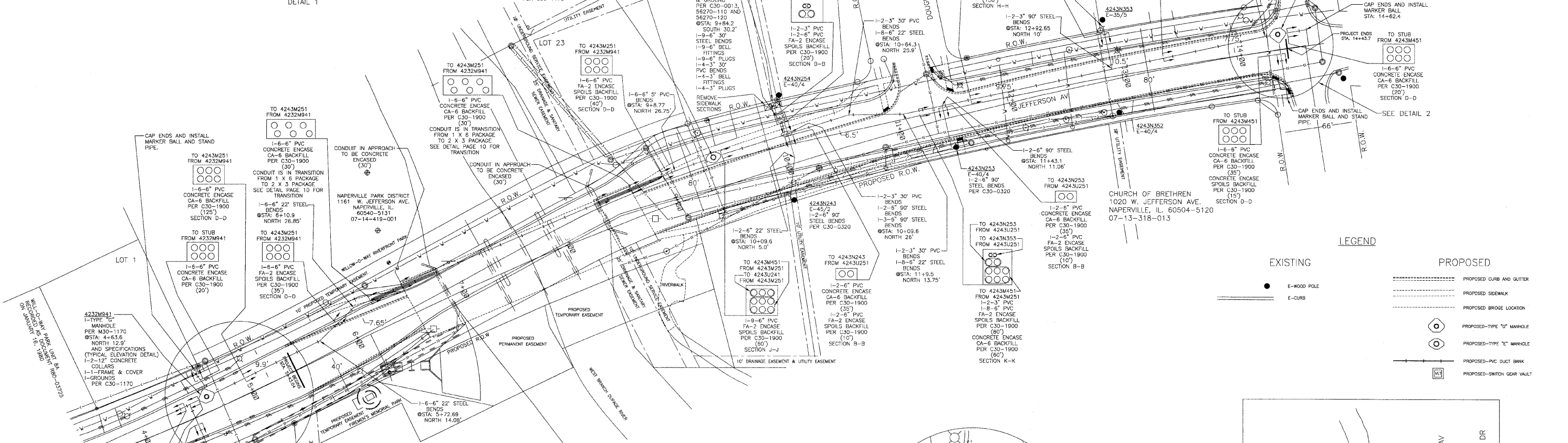


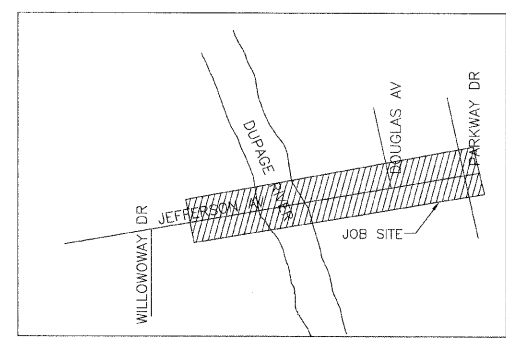
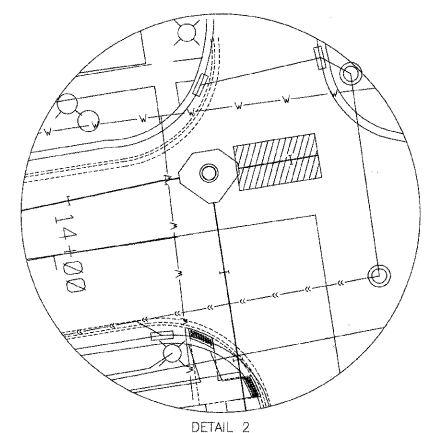
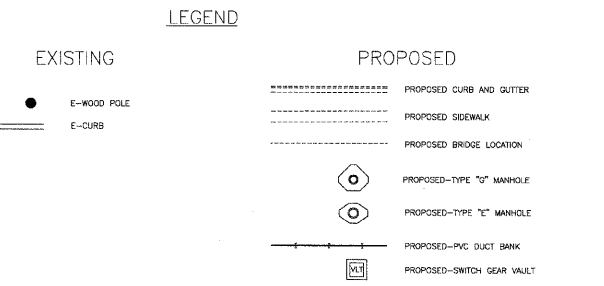
F.A. RTE.	SECTION	COUNTY	TOTAL SHEETS	SHEET NO.
3570	00-00116-00-BR	DUPAGE	106	58
STA. 4+38.47	TO STA. 14+62.4			
FED. ROAD DIST. NO.	ILLINOIS	FED. AID PROJECT		
CONTRACT 83827				



- SAW CUT AND REMOVE DRIVEWAY APRON AREA = 102 SQ. YDS.
- LANDSCAPE AREA = 75 SQ. YDS. SEED = .505 ACRES SOD = 75 SQ. YDS.
- REMOVE AND REPLACE SIDEWALK AREA = 75 SQ. FT.
- SAW CUT AND REMOVE ASPHALT PAVEMENT AND PATCH AREA = 650 SQ. YDS.



**CONSTRUCTION NOTE:**  
 LOCATE DIRECT BURIED 3-4/0 CABLE. DIG UP 10' SECTION OF 3-4/0 CABLE NEAR HANDHOLE (4232H941). BACKFILL CABLE W/FA-2 INSTALL HANDHOLE NEXT TO TRENCH WITH FA-2. INSTALL 2-6"-30" STEEL BENDS IN THE EASTSIDE OF HANDHOLE. INSTALL 1-6"-30" STEEL BEND OUT WEST SIDE OF HANDHOLE.



CITY OF NAPERVILLE/DEPARTMENT OF PUBLIC UTILITIES - ELECTRIC			
CALL J.U.L.I.E. 48 HRS. PRIOR TO CONSTRUCTION			
PROJECT TITLE	MAP NO.	CAD FILE:	
JEFFERSON AV. BRIDGE DUCKBANK INSTALLATION	4232/4243	0054679001C3.DWG	
PROJECT DESCRIPTION	DRAWN BY:	PROJECT NO.:	
COORDINATED WITH BRIDGE IMPROVEMENT PROJECT	PM	EU13-04-06	
DATE	WORK REQUEST NO.	CHKD.	AT&T:
6-01-09	54679		COMPLETED BY:
ISSUED	APPR.	SCALE:	
ENGINEER PSM		1"=40'	SHEET 3 OF 30
REVISION			