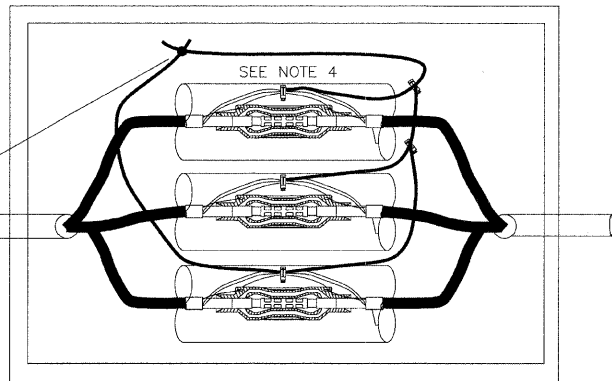
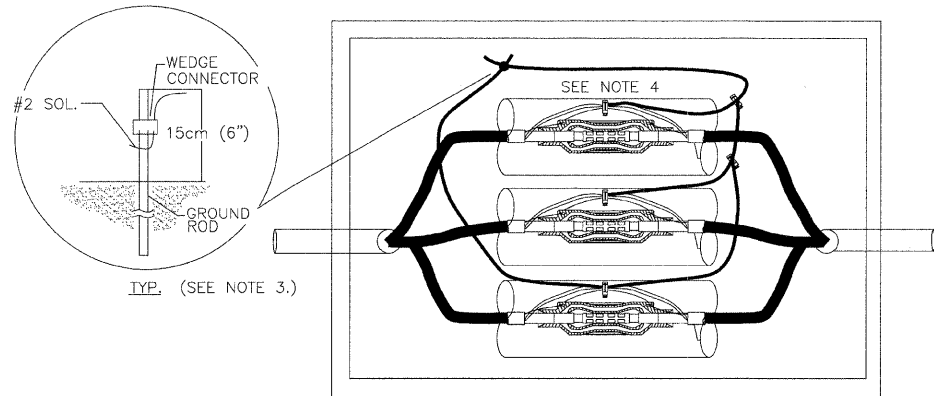
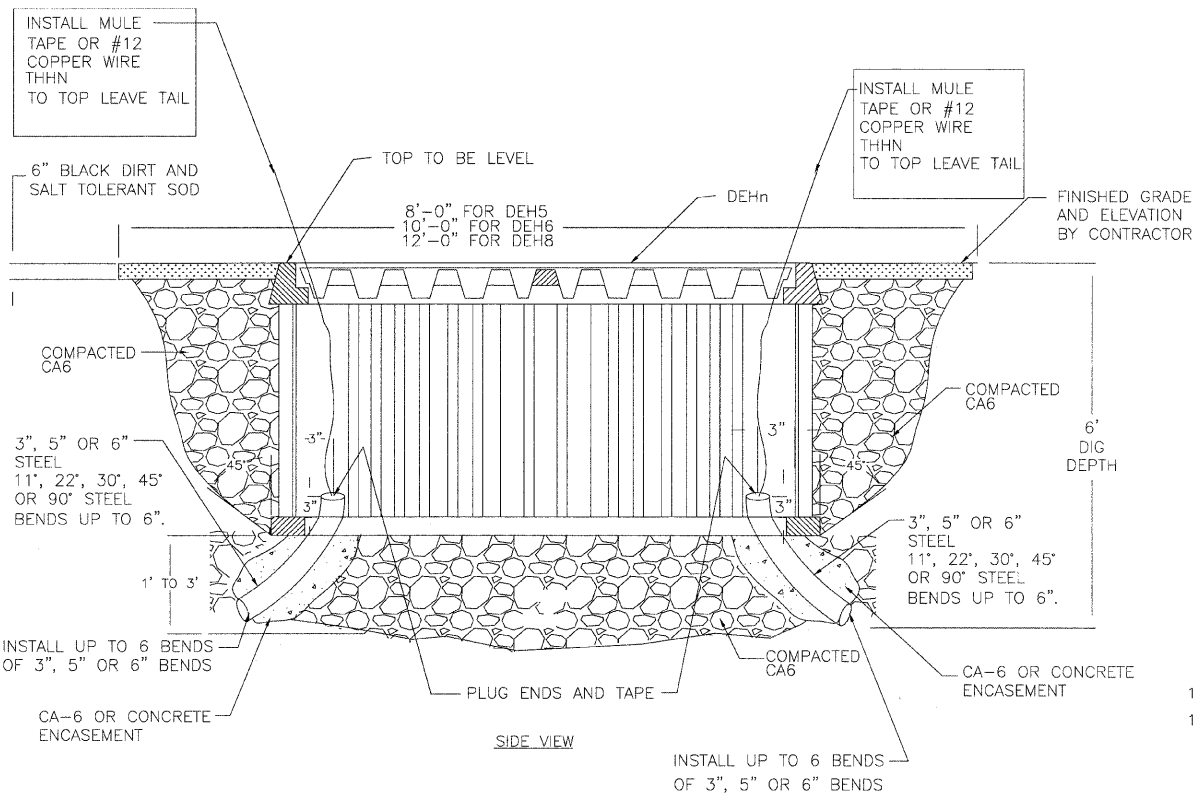


F.A. RTE.	SECTION	COUNTY	TOTAL SHEETS	SHEET NO.
3570	00-00116-00-BR	DUPAGE	106	84
STA. 4+38.47		TO STA. 14+62.4		
FED. ROAD DIST. NO.		ILLINOIS	FED. AID PROJECT	
CONTRACT 83827				



TOP VIEW



SIDE VIEW

ASSEMBLY CODES		
CODE	QTY	DESCRIPTION
DEHn	1	SPLICE BOX
DnBxxP	**	BEND, PVC
DnBxxS	**	BEND, STEEL
UGHn	1	GROUNDING HANDHOLE

n dependent on size
xx bend angle dependent on field condition (typically 30°)
** quantity is dependent on application

NOTE:

- BENDS SHALL BE INSTALLED PER FIELD CONDITION.
- SPARES NOT SHOWN.
- GROUNDING WILL NOT BE INSTALLED AT TIME OF HANDHOLE INSTALLATION, BUT WILL BE INSTALLED WITH SPLICE.
- BREAK-AWAY MUST BE WRAPPED WITH AQUA SEAL MASTIC TO PREVENT TEARING OF HEAT SHRINK WRAP AROUND SLEEVE.
- INSTALL COVERS BEFORE BACKFILLING OPERATIONS TO HELP SUPPORT UPPER BOX SECTION WHILE EARTH IS PLACED AND COMPACTED.
- EXCAVATION:
8' LONG BY 6' DEEP BY 6' WIDE DEH5.
10' LONG BY 6' DEEP BY 6' WIDE DEH6.
12' LONG BY 6' DEEP BY 6' WIDE DEH8.
- BACK FILL WITH COMPACTED CA6.
- CUT HANDHOLE TO INSTALL PIPE, IF REQUIRED.
- ALL MATERIALS BY THE CITY EXCEPT BACKFILL AND RESTORATION.
- CABLE WORK NOT REQUIRED.
- RESTORATION BY CONTRACTOR.

DEHn: HANDHOLE (SPLICE BOX)

Item Code	Description 1	Description 2	DEH			
			5	6	8	8A
Qty	Qty	Qty	Qty	Qty	Qty	Qty
284 104 00010	HANDHOLE	36" X 60" X 36"	1			
284 104 00020	HANDHOLE	48" X 78" X 36"		1		
284 104 00030	HANDHOLE	48" X 96" X 36"			1	
284 104 00040	HANDHOLE, ADJUSTABLE	48" X 96" X 36"				1

DnBxxP: BEND, PVC

Assembly	Item Code	Description 1	Description 2	Qty
D3B30P	285 101 00025	ELBOW, PVC 30 DEG 3"	STANDARD RADIUS SCH 40	1
D3B45P	285 101 00030	ELBOW, 36"R PVC 45 DEG 3"	SCH 40	1
D3B90P	285 101 00040	ELBOW, 36"R PVC 90 DEG 3"	SCH 40	1
D5B30P	285 101 00080	ELBOW, 36"R PVC 30 DEG 5"	SCH 40	1
D5B45P	285 101 00090	ELBOW, 36"R PVC 45 DEG 5"	SCH 40	1
D5B90P	285 101 00100	ELBOW, 36"R PVC 90 DEG 5"	SCH 40	1
D6B30P	285 101 00220	ELBOW, 48"R PVC 30 DEG 6"	SCH 40	1
D6B45P	285 101 00230	ELBOW, 48"R PVC 45 DEG 6"	SCH 40	1
D6B90P	285 101 00240	ELBOW, 48"R PVC 90 DEG 6"	SCH 40	1

D3BxxS: BEND, 3" STEEL

Item Code	Description 1	Description 2	Qty
285 101 00140	ELBOW, 30"R STL 90 DEG 3"	GALVANIZED	1
285 102 00040	COUPLING, PVC 3"	LONG LINE SCH 40	1

D5BxxS: BEND, 5" STEEL

Item Code	Description 1	Description 2	D5B30S	D5B45S	D5B90S
Qty	Qty	Qty	Qty	Qty	Qty
285 101 00160	ELBOW, 36"R STL 30 DEG 5"	GALVANIZED	1		
285 101 00170	ELBOW, 36"R STL 45 DEG 5"	GALVANIZED		1	
285 101 00180	ELBOW, 36"R STL 90 DEG 5"	GALVANIZED			1
285 102 00110	COUPLING, PVC 5"	LONG LINE SCH 40	1	1	1

D6BxxS: BEND, 6" STEEL

Item Code	Description 1	Description 2	D6B11S	D6B22S	D6B30S	D6B45S	D6B90S
Qty	Qty	Qty	Qty	Qty	Qty	Qty	Qty
285 101 00186	ELBOW, 48"R STL 11 DEG 6"	GALVANIZED	1				
285 101 00188	ELBOW, 48"R 22.5 DEG 6"	GALVANIZED		1			
285 101 00190	ELBOW, 48"R STL 30 DEG 6"	GALVANIZED			1		
285 101 00200	ELBOW, 48"R STL 45 DEG 6"	GALVANIZED				1	
285 101 00210	ELBOW, 48"R STL 90 DEG 6"	GALVANIZED					1
285 102 00140	COUPLING, PVC 6"	LONG LINE SCH 40	1	1	1	1	1

UGHn: GROUNDING, HANDHOLE

Item Code	Description 1	Description 2	UGH1	UGH3
Qty	Qty	Qty	Qty	Qty
280 107 00020	CU BARE SD	#2 SOL	10	30
283 156 00010	GROUND ROD COPPER CLAD	5/8" X 10'	1	1
286 100 00320	CONNECTOR, WEDGE CU	4/0 STR(7) - 5/8" ROD	1	1
286 101 00010	SHELL, WEDGE AMP	BLUE	1	1
286 199 00210	CONNECTOR, BREAK-AWAY CU	2SOL-2/OSTR X 2SOL-2/OSTR		2

NAPERVILLE PUBLIC UTILITIES DEPARTMENT
ELECTRIC STANDARDS
HANDHOLE ASSEMBLY
DATE: 04-07-04
Page 1 of 2
C30-6336

NAPERVILLE PUBLIC UTILITIES DEPARTMENT
ELECTRIC STANDARDS
HANDHOLE ASSEMBLY
DATE: 04-07-04
Page 2 of 2
C30-6336

CITY OF NAPERVILLE/DEPARTMENT OF PUBLIC UTILITIES - ELECTRIC

CALL J.U.L.I.E. 48 HRS. PRIOR TO CONSTRUCTION

PROJECT TITLE JEFFERSON AV. BRIDGE DUCTBANK INSTALLATION	MAP NO.: -	CAD FILE: 0054679001D29.DWG
PROJECT DESCRIPTION HANDHOLE DETAILS	DRAWN BY: JK, PM	PROJECT NO.: EU13-04-06
DATE 6-01 09	WORK REQUEST NO. 54679	CHKD: SBC:
ISSUED ENGINEER REVISION	APPR: SCALE: NTS	COMPLETED BY: SHEET 29 OF 30