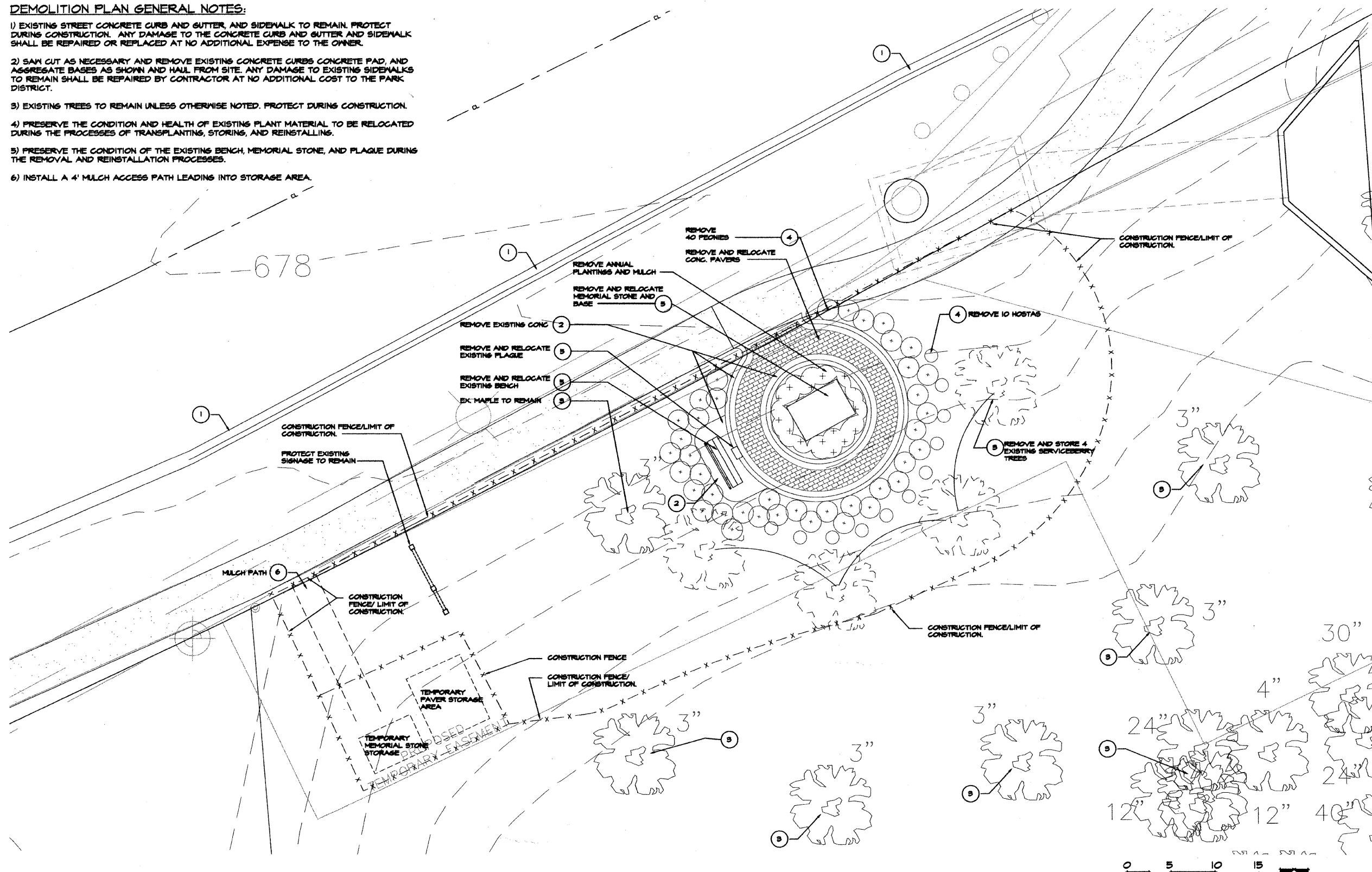


CONTRACT NO. 83827				
F.A.L.I. RTE.	SECTION	COUNTY	TOTAL SHEETS	SHEET NO.
3570	00-00116-00-BR	DUPAGE	106	98
STA.		TO STA.		
FED. ROAD DIST. NO.	ILLINOIS	FED. AID PROJECT		

**DEMOLITION PLAN GENERAL NOTES:**

- 1) EXISTING STREET CONCRETE CURB AND GUTTER, AND SIDEWALK TO REMAIN. PROTECT DURING CONSTRUCTION. ANY DAMAGE TO THE CONCRETE CURB AND GUTTER AND SIDEWALK SHALL BE REPAIRED OR REPLACED AT NO ADDITIONAL EXPENSE TO THE OWNER.
- 2) SAW CUT AS NECESSARY AND REMOVE EXISTING CONCRETE CURBS CONCRETE PAD, AND AGGREGATE BASES AS SHOWN AND HULL FROM SITE. ANY DAMAGE TO EXISTING SIDEWALKS TO REMAIN SHALL BE REPAIRED BY CONTRACTOR AT NO ADDITIONAL COST TO THE PARK DISTRICT.
- 3) EXISTING TREES TO REMAIN UNLESS OTHERWISE NOTED. PROTECT DURING CONSTRUCTION.
- 4) PRESERVE THE CONDITION AND HEALTH OF EXISTING PLANT MATERIAL TO BE RELOCATED DURING THE PROCESSES OF TRANSPLANTING, STORING, AND REINSTALLING.
- 5) PRESERVE THE CONDITION OF THE EXISTING BENCH, MEMORIAL STONE, AND PLAQUE DURING THE REMOVAL AND REINSTALLATION PROCESSES.
- 6) INSTALL A 4' MULCH ACCESS PATH LEADING INTO STORAGE AREA.

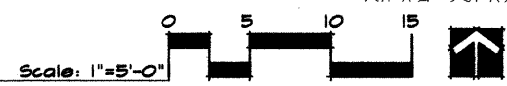


EXISTING CONDITIONS & DEMOLITION PLAN
REVISIONS
DATE
SUBMITTAL

**FIREMEN'S MEMORIAL**  
Naperville, Illinois

REVIEWED BY:	APPROVED BY:	DRAWN/DESIGNED BY:	PROJECT NO.:
		BCL	P20164-01
PLANNING RESOURCES INC. 400 W. ALPINE DRIVE, WILMINGTON, IL 60182		Date:	
		10.06.05	

1 SD2.0 EXISTING CONDITIONS & DEMOLITION PLAN



Drawing  
**SD2.0**  
Existing Conditions & Demolition Plan