

F.A.U. RTE.	SECTION	COUNTY	TOTAL SHEETS	SHEET NO.
3570	00-00116-00-BR	DUPAGE	106	104
STA.		TO STA.		
FED. ROAD DIST. NO.		ILLINOIS	FED. AID PROJECT	

**PLANT LIST:**

Code	Scientific Name	Common Name	Size	Qty	Remarks
<b>SHADE TREES</b>					
AAB	Acer x freemanii 'Autumn Blaze'	Autumn Blaze Maple	4.0'	4	B&B
TCG	Tilia cordata 'Greenspire'	Greenspire Littleleaf Linden	4.0'	1	B&B
<b>EVERGREEN TREES</b>					
PSW	Pinus strobus	Eastern White Pine	7'	3	B&B
<b>EVERGREEN SHRUBS</b>					
BGV	Buxus microphylla 'Green Velvet'	Green Velvet Boxwood	24"	5	5 Gallon Container
TOM	Thuja occidentalis 'Mission'	Mission Arborvitae	6'	6	B&B
<b>ORNAMENTAL SHRUBS</b>					
APBB	Asclepias parviflora 'Rogers'	Rogers Bottle Buckeye	36"	3	B&B
CTS	Chamaecrista speciosa 'Texas Scarlet'	Texas Scarlet Quince	18"	23	5 Gallon Container
HAA	Hydrangea arborescens 'Annabelle'	Annabelle Hydrangea	24"	41	5 Gallon Container
KJP	Kerria japonica 'Preniflora'	Double-Flowering Japanese Kerria	24"	17	5 Gallon Container
RAG	Rhus aromatica 'Gro-low'	Gro-Low Fragrant Sumac	24"	45	5 Gallon Container
RTE	Rhus typhina 'Ballidge'	Tiger Eyes Cattleleaf Sumac	36"	12	Multi-Steem, 5G Container
RKO	Rosa 'Knockout'	Knockout Shrub Rose	18"	7	3 Gallon Container
VP	Viburnum prunifolium	Blackhaw Viburnum	5'	2	B&B
<b>PERENNIALS / ORNAMENTAL GRASSES</b>					
AAF	Asilbe chinensis 'Fanal'	Fanal Astilbe	1 G	30	Container
AML	Alchemilla mollis	Lady's Mantle	1 G	72	Container
CKF	Calamagrostis acutiflora 'Karl Forester'	Karl Forester Feather Reed Grass	3 G	5	Container
HAM	Hosta 'August Moon'	August Moon Hosta	1 G	100	Container
HPA	Hosta plantaginea 'Patriot'	Patriot Hosta	1 G	20	Container
HGS	Hosta 'Gold Standard'	Gold Standard Hosta	1 G	40	Container
ICB	Iris sibirica 'Caesar's Brother'	Caesar's Brother Siberian Iris	1 G	7	Container
NBW	Nepeta x faassenii 'Blue Wonder'	Blue Wonder Catmint	1 G	50	Container
SMN	Salvia x superba 'May Night'	May Night Salvia	1 G	10	Container
<b>GROUNDCOVERS</b>					
WT	Waldsteinia fragarioides	Barren Strawberry	3"	360	Container
<b>ANNUALS</b>					
AF	Annual Flowers	Annual Flowers	Flats		BY PARK DISTRICT
<b>MISCELLANEOUS</b>					
AB	Accent Boulder	Accent Boulder (Native Limestone)	30"	2	30" DIA. ACCENT BOULDER From On-Site Excavation

**NOTES:**

- Restore all turf areas as noted with an approved blend of improved Kentucky Bluegrass Sod with a mineral soil back.
- Final grading shall provide slopes which are smooth and continuous. Positive drainage shall be provided in all areas.
- Prior to turf installation all areas shall be fertilized with a 12-12-12 granular fertilizer at a rate of 400 lbs. per Acre.
- Prepare perennial, ornamental grass, groundcover and annual flower beds with 1 CY. composted leaf mulch per 100 SF, resodded to an 8" depth.
- Mulch all trees and shrub beds with a minimum of three inches shredded hardwood bark mulch.
- Mulch perennial, ornamental grass, groundcover and annual beds with minimum of one inch shredded hardwood bark mulch.
- All bed lines and tree saucers require a 4" deep spaded edge between lawn and mulch areas.
- Plant material sizing, branching and ball sizes shall conform to the "American Standards for Nursery Stock" (latest edition) by the American Association of Nurserymen, Inc.
- Plant material shall be nursery grown and be either balled and burlapped or container grown. Sizes and spreads on plant list represent minimum requirements.
- Quantity lists are supplied as a convenience. Contractor shall verify all quantities, and in case of a discrepancy, the plan shall prevail.
- The Landscape Contractor shall adjust plant locations in field to maintain appropriate spacing from fire hydrants, light poles, all utility structures, driveways and sidewalks. Approval of the Landscape Architect is required when field adjustments to be implemented do not conform to the intent of the plans.
- Contractor shall report any discrepancies in the field to the Landscape Architect and/or Owner.
- The Landscape Contractor shall verify locations of all underground utilities prior to digging, is required to Contact J.U.L.I.E. (1.800.882.0123), and any other public or private agency necessary for utility location 48 hours prior to construction.
- Where underground utilities exist, all field adjustments must be approved by the landscape architect.
- The Landscape Contractor shall water plant material, seed and sod areas until the plants have become adequately established and until final acceptance by the owner. Owner to provide all supplemental watering and proper care and maintenance of all plant materials, seed and sod areas after acceptance of Landscape Contractors work.
- No plants are to be changed or substituted without the approval of the Landscape Architect and the City of Naperville.
- Landscape Contractor shall warrant all material and labor for a period of one year from the date of final acceptance and shall repair any defects and replace all dead plant material as required during the warranty period.

**BASE INFORMATION:**

BASE SHEET BACKGROUND EXISTING CONDITIONS, PROPOSED BRIDGE IMPROVEMENTS, TOPOGRAPHY, FLOODPLAIN AND TREE LOCATIONS AS PER SURVEY INFORMATION PREPARED BY BOLLINGER, LACH & ASSOCIATES AND SUPPLEMENTED WITH FIELD INVESTIGATIONS AND SURVEYS CONDUCTED BY SIGNATURE DESIGN GROUP, INC. IN MAY & JULY 2005.

**SCHEDULE OF QUANTITIES:**

SEE SHEET L5 FOR A SCHEDULE OF QUANTITIES.



Land Planning  
Landscape Architecture  
Environmental Site Design

17 COURT PLACE - NAPERVILLE, IL 60540 - 630.353.9900 Fax: 630.353.9944

project:

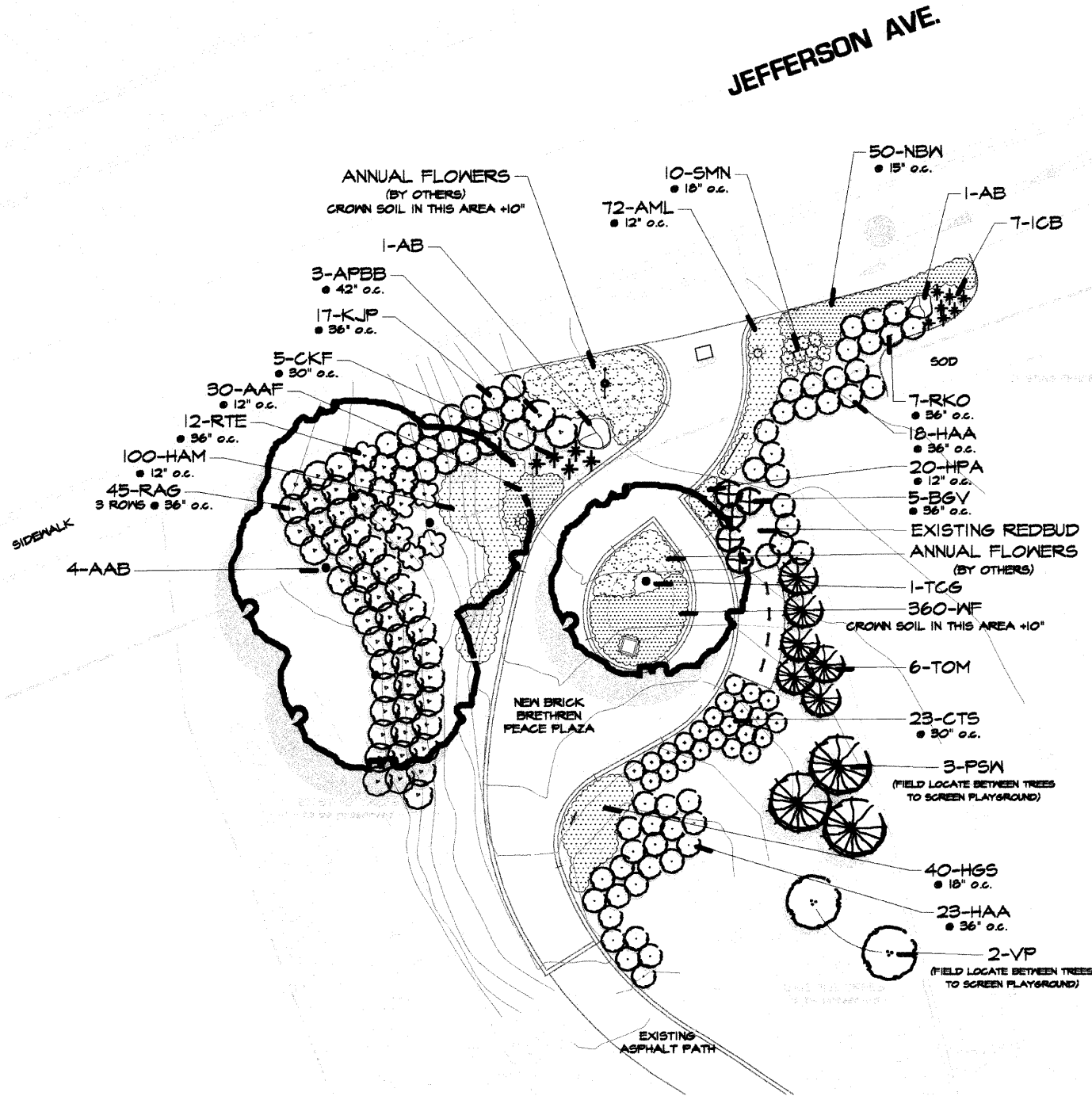
**RIVERWALK  
JEFFERSON AVE.  
GATEWAY PLAZA**

Brethren Peace Plaza

NAPERVILLE, ILLINOIS

sheet description:

**Planting  
Plan**



**SCALE NOTE:**  
ATTENTION: THE SCALE ON THIS PLAN DRAWING 1/8" = 10' IS DIFFERENT THAN THAT OF THE RECONSTRUCTION PLANS AND AS SHOWN ON THE ENGINEERING COVER SHEET. PLAN USERS TAKE NOTICE.



scale: 1/8" = 10'

6/04/2005	Per New Bike Parking Area
6/06/2005	Per RMC Review Comments
10/26/2005	Per IDOT Review
6/15/2005	Per Bollinger, Lach & Associates Preliminary Plan Review Comments
7/18/2005	Per City Review Comments ADA Grading
6/18/2005	Per RMC Commission Review 60% Progress Prints

original issue date: **2 MAY 2005**

drawn by: [Signature]  
checked by: [Signature]  
project no: **25005**  
sheet no: