

CONTRACT NO. 03027				
F.A.U. RTE.	SECTION	COUNTY	TOTAL SHEETS	SHEET NO.
3570	00-00116-00-BR	DUPAGE	106	105
STA.		TO STA.		
FED. ROAD DIST. NO.		ILLINOIS	FED. AID PROJECT	



Land Planning  
Landscape Architecture  
Environmental Site Design

17 COURT PEACE - NAPERVILLE, IL 60540 - 630.303.3980 Fax 630.303.3994

project:

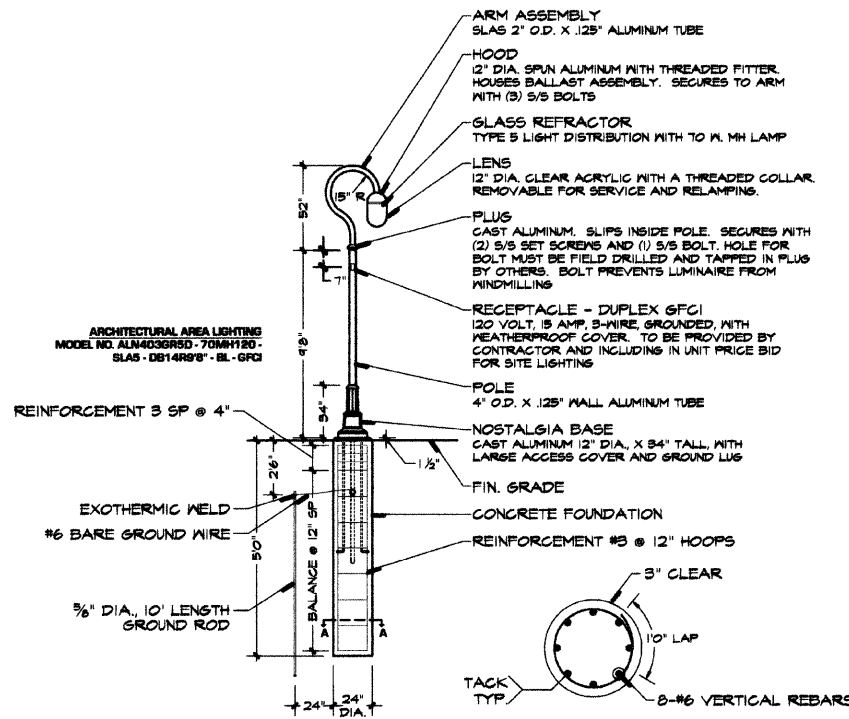
**RIVERWALK  
JEFFERSON AVE.  
GATEWAY PLAZA**

Brethren Peace Plaza

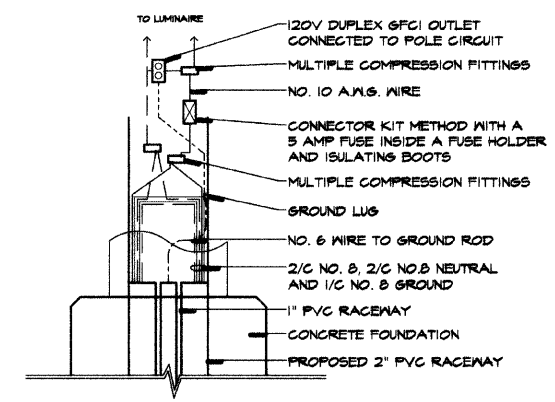
NAPERVILLE, ILLINOIS

sheet description:

**Construction  
Details**

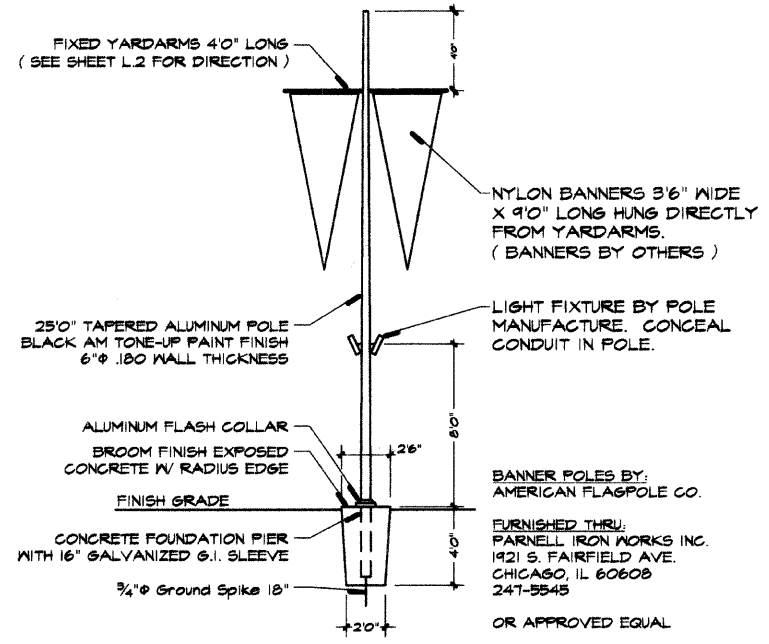


**ELEVATION FOUNDATION SECTION A-A**



**POLE HANDHOLE WIRING DIAGRAM**

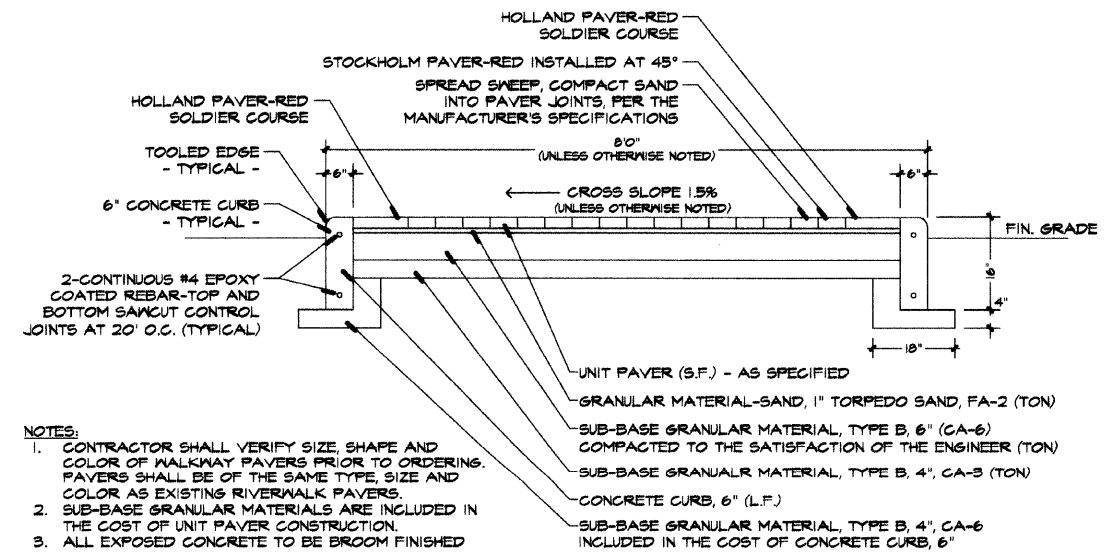
NOTE: POWER TO BE SUPPLIED FROM EXISTING LIGHT POLE 25 FT. SOUTH. COST TO EXTEND CONDUIT AND WIRE TO NEW LIGHT POLE SHALL BE INCLUDED IN COST OF NEW LIGHT POLE.



**DOUBLE BANNER POLE DETAIL**

**4  
A** SHEPARD'S CROOK LIGHT POLE DETAIL

N.T.S.



**4  
C** BRICK WALKWAY PAVING DETAIL

N.T.S.

north: scale: AS SHOWN

revisions:

10/26/2005	Per IDOT Review
8/15/2005	Per Bollinger, Lach & Associates Professional Plan Review Comments
7/15/2005	Per City Review Comments ADA Grading
6/16/2005	Per R/W Commission Review 80% Program Prints

original issue date: **2 MAY 2005**

drawn by: \_\_\_\_\_  
checked by: \_\_\_\_\_  
project no: **25005**  
sheet no: \_\_\_\_\_



**L4 of 5**