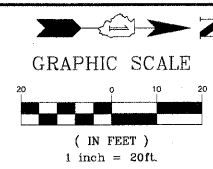


DEMOLITION PLAN NOTES

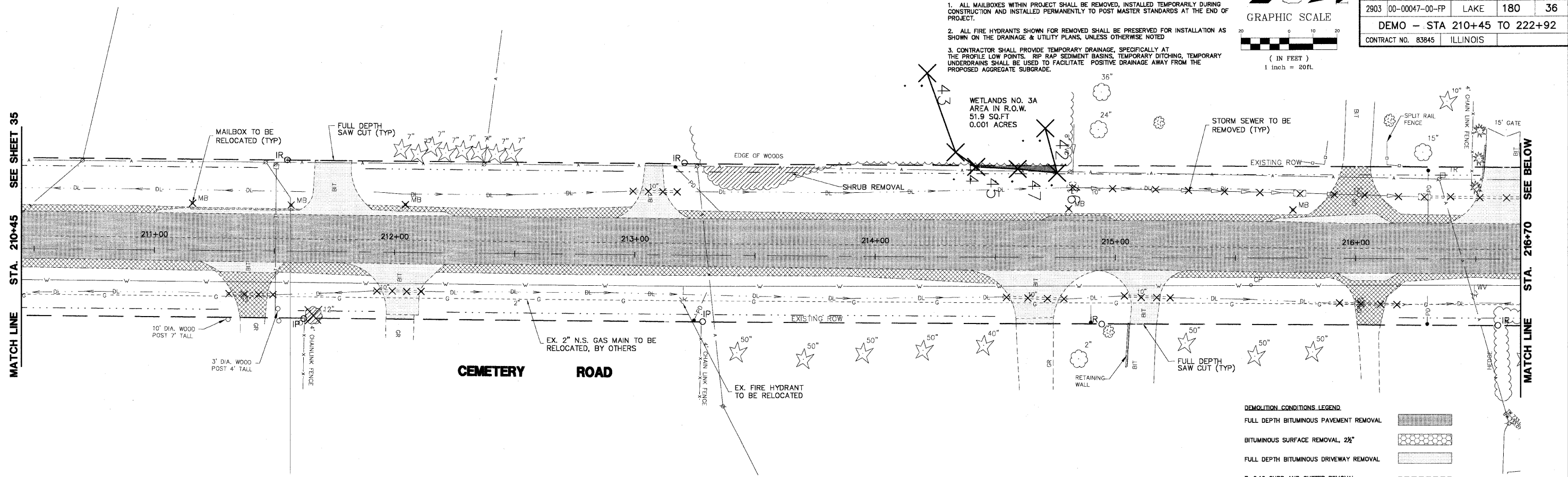
1. ALL MAILBOXES WITHIN PROJECT SHALL BE REMOVED, INSTALLED TEMPORARILY DURING CONSTRUCTION AND INSTALLED PERMANENTLY TO POST MASTER STANDARDS AT THE END OF PROJECT.
2. ALL FIRE HYDRANTS SHOWN FOR REMOVED SHALL BE PRESERVED FOR INSTALLATION AS SHOWN ON THE DRAINAGE & UTILITY PLANS, UNLESS OTHERWISE NOTED
3. CONTRACTOR SHALL PROVIDE TEMPORARY DRAINAGE, SPECIFICALLY AT THE PROFILE LOW POINTS, RIP RAP SEDIMENT BASINS, TEMPORARY DITCHING, TEMPORARY UNDERDRAINS SHALL BE USED TO FACILITATE POSITIVE DRAINAGE AWAY FROM THE PROPOSED AGGREGATE SUBGRADE.



| | | | | |
|-------------------------------------|----------------|----------|--------------|-----------|
| F.A.U. R.T.E. | SECTION | COUNTY | TOTAL SHEETS | SHEET NO. |
| 2903 | 00-00047-00-FP | LAKE | 180 | 36 |
| DEMO -- STA 210+45 TO 222+92 | | | | |
| CONTRACT NO. 83845 | | ILLINOIS | | |

MATCH LINE STA. 210+45 SEE SHEET 35

MATCH LINE STA. 216+70 SEE BELOW

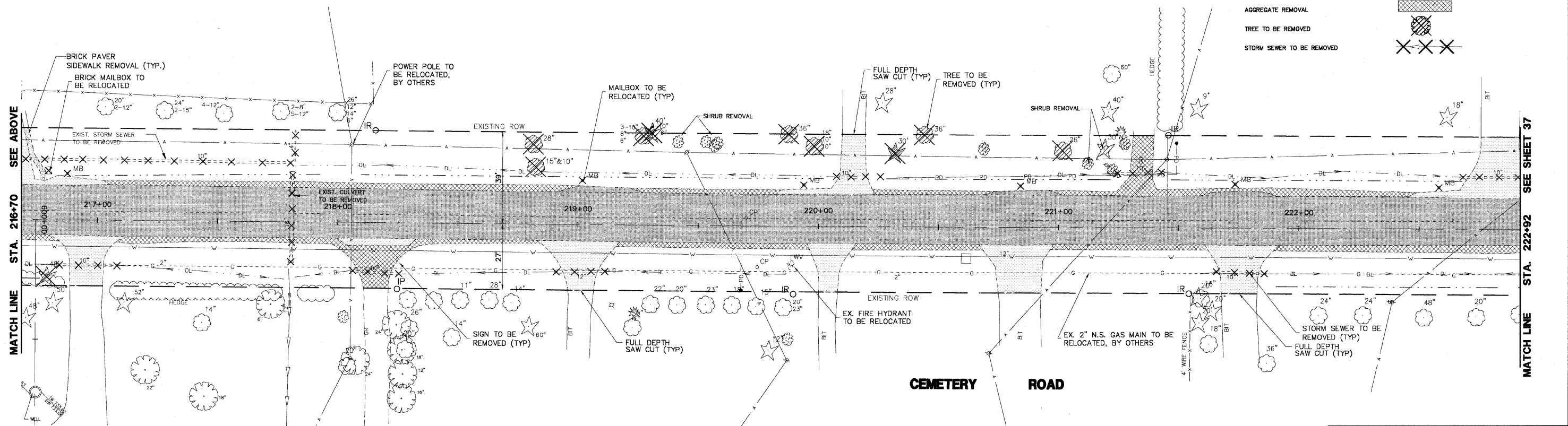


DEMOLITION CONDITIONS LEGEND

| | |
|--|--|
| FULL DEPTH BITUMINOUS PAVEMENT REMOVAL | |
| BITUMINOUS SURFACE REMOVAL, 2 1/2" | |
| FULL DEPTH BITUMINOUS DRIVEWAY REMOVAL | |
| 8-6.12 CURB AND GUTTER REMOVAL | |
| AGGREGATE REMOVAL | |
| TREE TO BE REMOVED | |
| STORM SEWER TO BE REMOVED | |

MATCH LINE STA. 216+70 SEE ABOVE

MATCH LINE STA. 222+92 SEE SHEET 37



PLANS PREPARED BY:
GEWALT HAMILTON
 ASSOCIATES, INC.
 Consulting Engineers & Surveyors
 850 Forest Edge Drive
 Vernon Hills, IL 60061
 (847) 478-9700
 (847) 478-9701 Fax

| REVISIONS | |
|-----------------------|----------|
| NAME | DATE |
| REV.-1 IDOT COMMENTS | 02-03-06 |
| REV.-2 PLANS STAGED | 06-02-06 |
| REV.-3 LCDOT COMMENTS | 11-20-06 |
| REV.-5 PRE-FINAL SUB | 02-20-09 |
| PS&S SUBMITTAL | 04-10-09 |

ILLINOIS DEPARTMENT OF TRANSPORTATION
DEMO PLAN
STA 210+45 TO 222+92
 PROPOSED ROADWAY WIDENING
 AND INTERSECTION IMPROVEMENTS
 CEMETERY ROAD

SCALE: 1" = 20'
 DATE: 7-27-05

DRAWN BY: CAD
 DESIGNED BY: TPG
 CHECKED BY: BLS