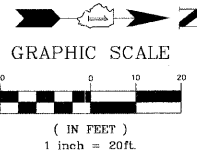
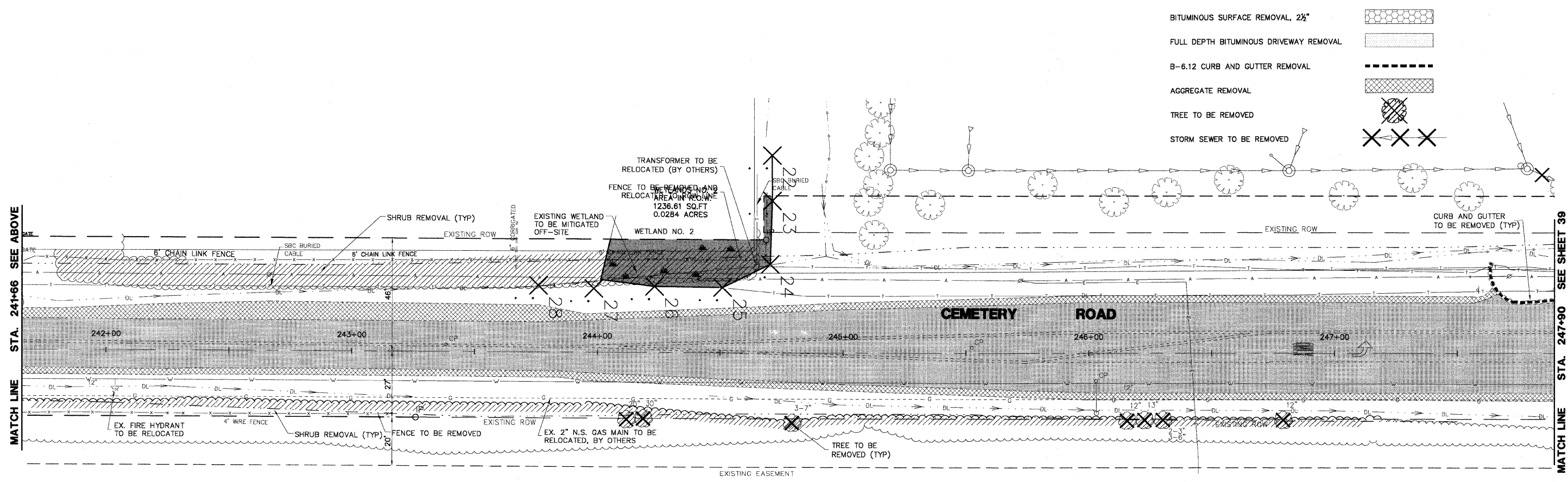
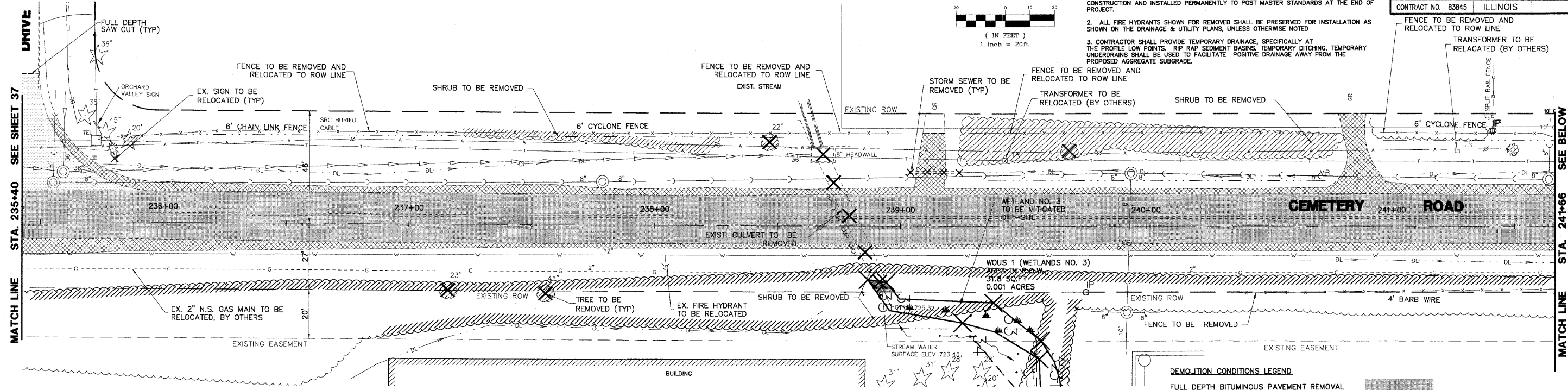


F.A.U. R.T.E.	SECTION	COUNTY	TOTAL SHEETS	SHEET NO.
2903	00-00047-00-FP	LAKE	180	38
DEMO - STA 235+40 TO 247+90				
CONTRACT NO. 83845		ILLINOIS		



- DEMOLITION PLAN NOTES**
- ALL MAILBOXES WITHIN PROJECT SHALL BE REMOVED, INSTALLED TEMPORARILY DURING CONSTRUCTION AND INSTALLED PERMANENTLY TO POST MASTER STANDARDS AT THE END OF PROJECT.
 - ALL FIRE HYDRANTS SHOWN FOR REMOVED SHALL BE PRESERVED FOR INSTALLATION AS SHOWN ON THE DRAINAGE & UTILITY PLANS, UNLESS OTHERWISE NOTED.
 - CONTRACTOR SHALL PROVIDE TEMPORARY DRAINAGE, SPECIFICALLY AT THE PROFILE LOW POINTS, RIP RAP SEDIMENT BASINS, TEMPORARY DITCHING, TEMPORARY UNDERDRAINS SHALL BE USED TO FACILITATE POSITIVE DRAINAGE AWAY FROM THE PROPOSED AGGREGATE SUBGRADE.



DEMOLITION CONDITIONS LEGEND

FULL DEPTH BITUMINOUS PAVEMENT REMOVAL	
BITUMINOUS SURFACE REMOVAL, 2 1/2"	
FULL DEPTH BITUMINOUS DRIVEWAY REMOVAL	
B-6.12 CURB AND GUTTER REMOVAL	
AGGREGATE REMOVAL	
TREE TO BE REMOVED	
STORM SEWER TO BE REMOVED	

PLANS PREPARED BY:
GEWALT HAMILTON
 ASSOCIATES, INC.
 Consulting Engineers & Surveyors
 650 Forest Edge Drive
 Vernon Hills, IL 60061
 (847) 478-9700
 (847) 478-9701 Fax

REVISIONS	
NAME	DATE
REV.-1 IDOT COMMENTS	02-03-06
REV.-2 PLANS STAGED	06-02-06
REV.-3 LCDOT COMMENTS	11-20-06
REV.-5 PRE-FINAL SUB	02-20-09
PS&E SUBMITTAL	04-10-09

ILLINOIS DEPARTMENT OF TRANSPORTATION
DEMO PLAN
STA 235+40 TO 247+90
PROPOSED ROADWAY WIDENING
AND INTERSECTION IMPROVEMENTS
CEMETERY ROAD

SCALE: 1" = 20'
 DATE: 07-27-05

DRAWN BY: CAD
 DESIGNED BY: TPG
 CHECKED BY: BLS