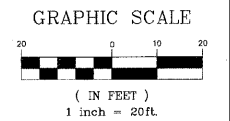
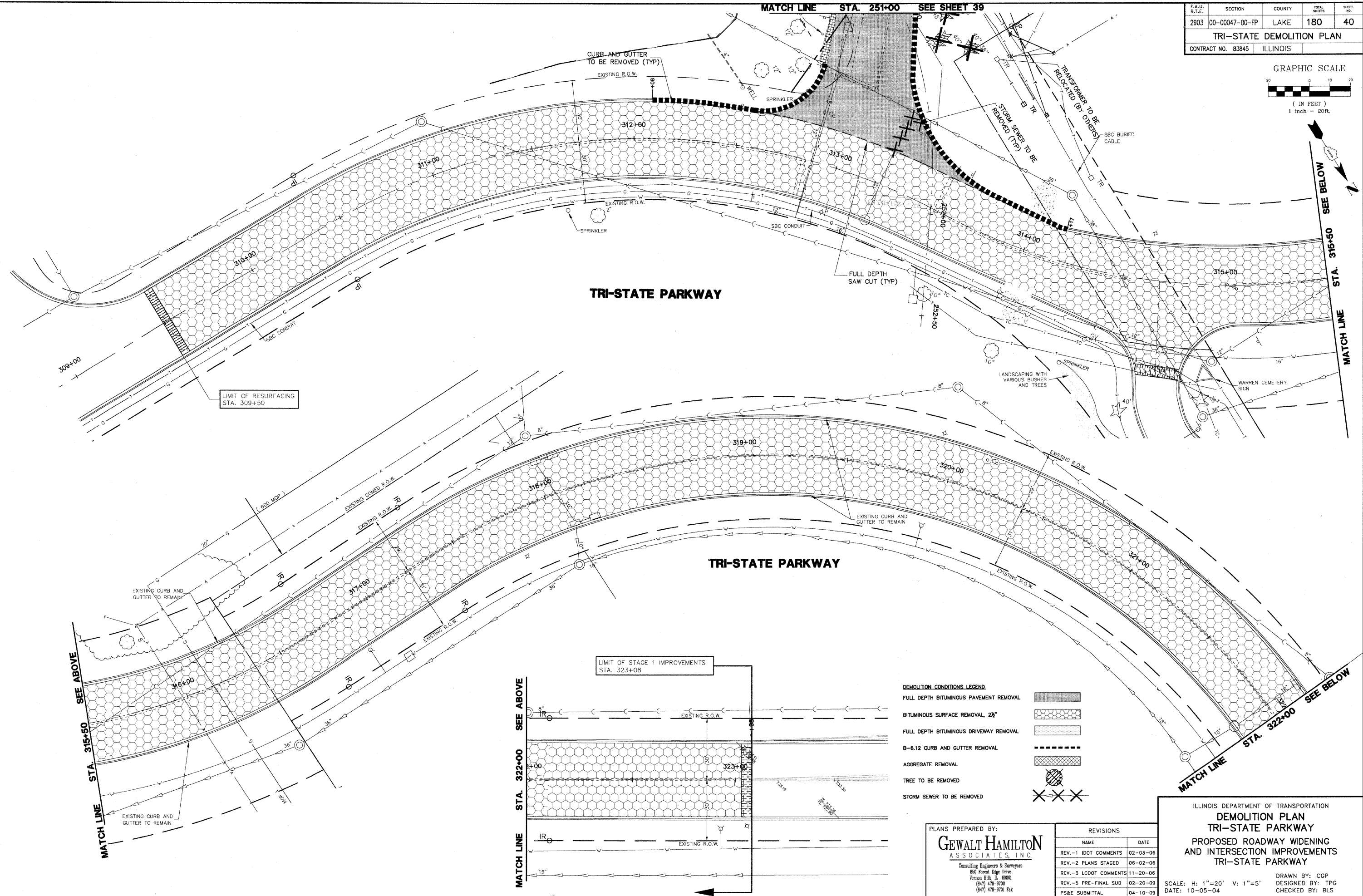


F.A.U. R.T.E.	SECTION	COUNTY	TOTAL SHEETS	SHEET NO.
2903	00-00047-00-FP	LAKE	180	40
<b>TRI-STATE DEMOLITION PLAN</b>				
CONTRACT NO. 83845		ILLINOIS		



MATCH LINE STA. 251+00 SEE SHEET 39



LIMIT OF RESURFACING  
STA. 309+50

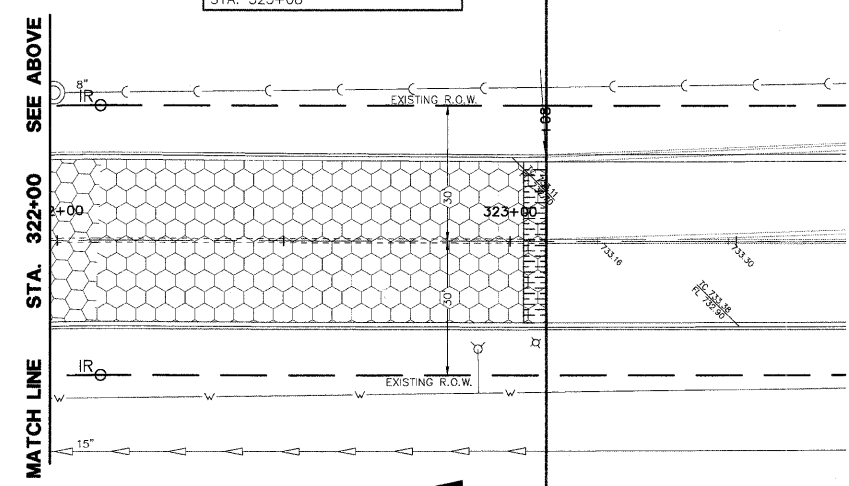
**TRI-STATE PARKWAY**

**TRI-STATE PARKWAY**

LIMIT OF STAGE 1 IMPROVEMENTS  
STA. 323+08

**DEMOLITION CONDITIONS LEGEND**

FULL DEPTH BITUMINOUS PAVEMENT REMOVAL	
BITUMINOUS SURFACE REMOVAL, 2 1/2"	
FULL DEPTH BITUMINOUS DRIVEWAY REMOVAL	
B-6.12 CURB AND GUTTER REMOVAL	
AGGREGATE REMOVAL	
TREE TO BE REMOVED	
STORM SEWER TO BE REMOVED	



PLANS PREPARED BY:  
**GEWALT HAMILTON**  
ASSOCIATES, INC.  
Consulting Engineers & Surveyors  
850 Forest Edge Drive  
Vernon Hills, IL 60061  
(847) 478-9700  
(847) 478-9701 Fax

REVISIONS	
NAME	DATE
REV.-1 IDOT COMMENTS	02-03-06
REV.-2 PLANS STAGED	06-02-06
REV.-3 LCDOT COMMENTS	11-20-06
REV.-5 PRE-FINAL SUB	02-20-09
PS&E SUBMITTAL	04-10-09

ILLINOIS DEPARTMENT OF TRANSPORTATION  
**DEMOLITION PLAN**  
**TRI-STATE PARKWAY**  
PROPOSED ROADWAY WIDENING  
AND INTERSECTION IMPROVEMENTS  
TRI-STATE PARKWAY

SCALE: H: 1"=20' V: 1"=5'  
DATE: 10-05-04

DRAWN BY: CGP  
DESIGNED BY: TPG  
CHECKED BY: BLS

MATCH LINE STA. 315+50 SEE ABOVE

MATCH LINE STA. 322+00 SEE BELOW

MATCH LINE STA. 315+50 SEE BELOW