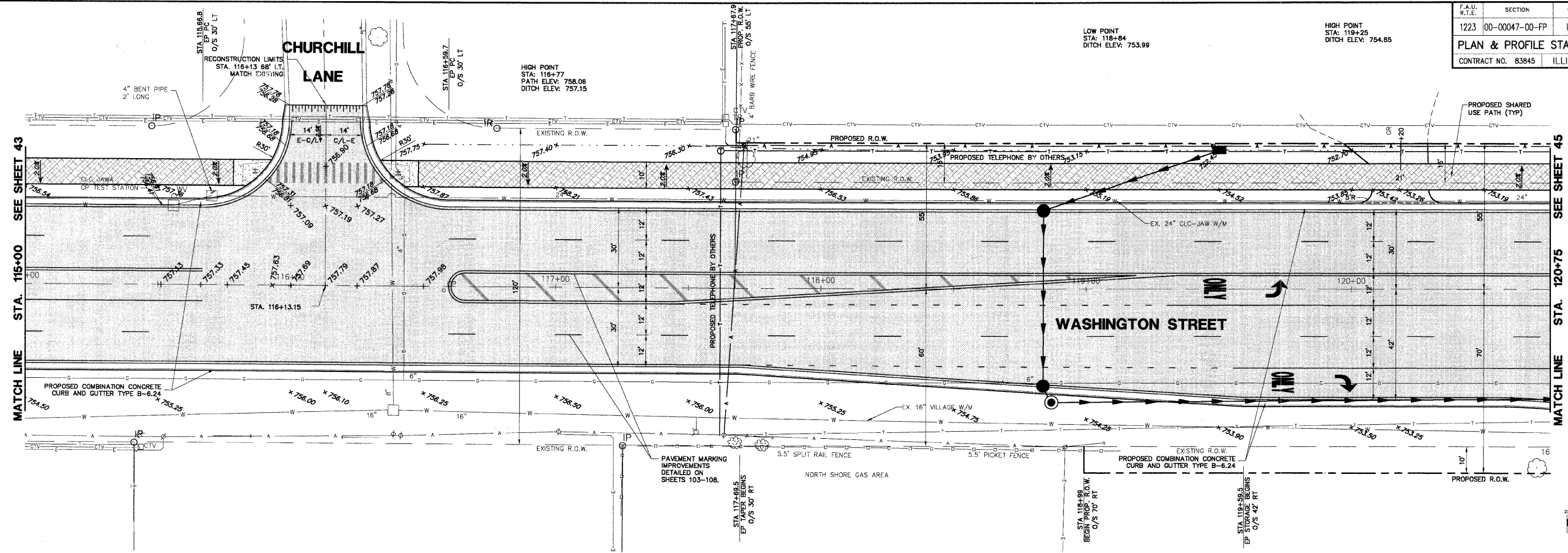
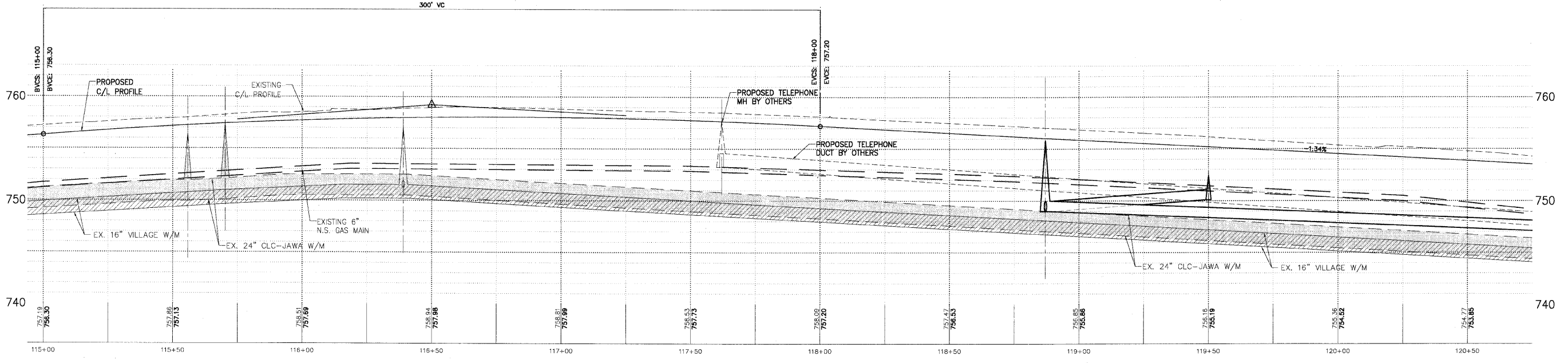


F.A.D. R.T.E.	SECTION	COUNTY	TOTAL SHEETS	SHEET NO.
1223	00-00047-00-FP	LAKE	180	44
PLAN & PROFILE STA 115+00 TO 120+75				
CONTRACT NO. 83845		ILLINOIS		



HIGH POINT ELEV = 758.02
HIGH POINT STA = 116+77.44
PVI STA = 116+50
PVI ELEV = 758.21
A.D. = -3.28
K = 91.46
300' VC



PLAN & PROFILE LEGEND
WASHINGTON STREET

- | | | | |
|--|---|--|--|
| | HOT-MIX ASPHALT PAVEMENT (FULL DEPTH), 12" 12" AGGREGATE SUBGRADE | | TYPE B-6.24 COMB. CONC. CURB AND GUTTER (8-6.12 CEMETERY ROAD) |
| | PROPOSED SHARED USE PATH | | DEPRESSED SECTION CURB AND GUTTER |
| | 2" HOT-MIX ASPHALT SURFACE COURSE, MIX 'D', N50 | | 5" P.C.C. SIDEWALK |
| | 2" HOT-MIX ASPHALT BINDER COURSE, IL-19.0, N50 | | 6" AGGREGATE BASE COURSE, TYPE 'B' |
| | 6" AGGREGATE BASE COURSE, TYPE 'B' | | CURBS RAMP FOR SIDEWALK |
| | PROPOSED MINOR ACCESS DRIVEWAY | | DETECTABLE WARNING |
| | 2.5" HOT-MIX ASPHALT SURFACE COURSE, MIX 'D', N50 | | |
| | 6" AGGREGATE BASE COURSE, TYPE 'B' | | |

PLANS PREPARED BY:
GEWALT HAMILTON ASSOCIATES, INC.
Consulting Engineers & Surveyors
850 Forest Edge Drive
Vernon Hills, IL 60061
(847) 478-9700
(847) 478-9700 Fax

REVISIONS	
NAME	DATE
REV.-1 IDOT COMMENTS	02-03-06
REV.-2 PLANS STAGED	06-02-06
REV.-5 PRE-FINAL SUB	02-20-09
PS&S SUBMITTAL	04-10-09

ILLINOIS DEPARTMENT OF TRANSPORTATION
PLAN AND PROFILE
STA 115+00 TO 120+75
PROPOSED ROADWAY RECONSTRUCTION
WASHINGTON STREET
SCALE: H: 1"=20' V: 1"=5'
DATE: 10-05-04
DRAWN BY: CGP
DESIGNED BY: TPG
CHECKED BY: BLS