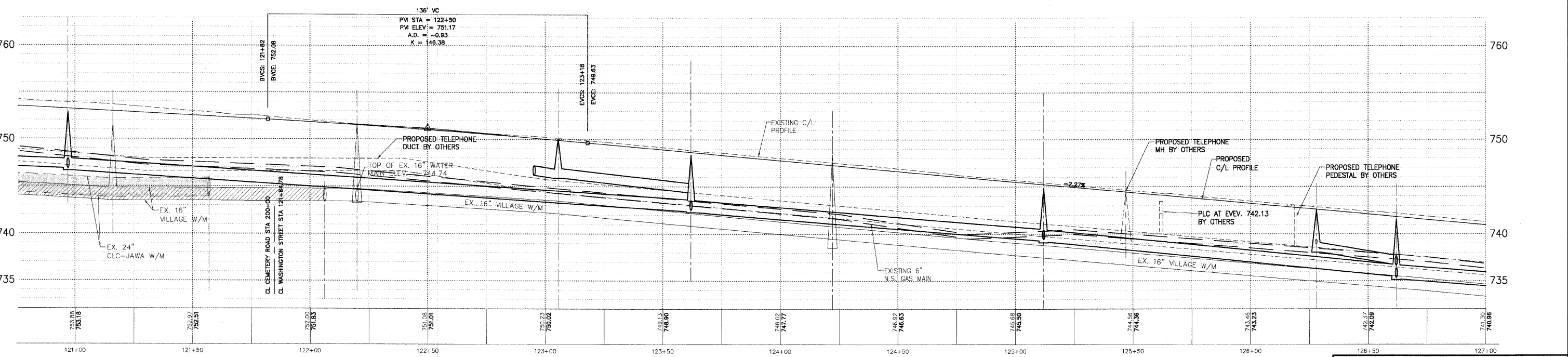
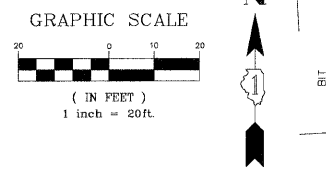
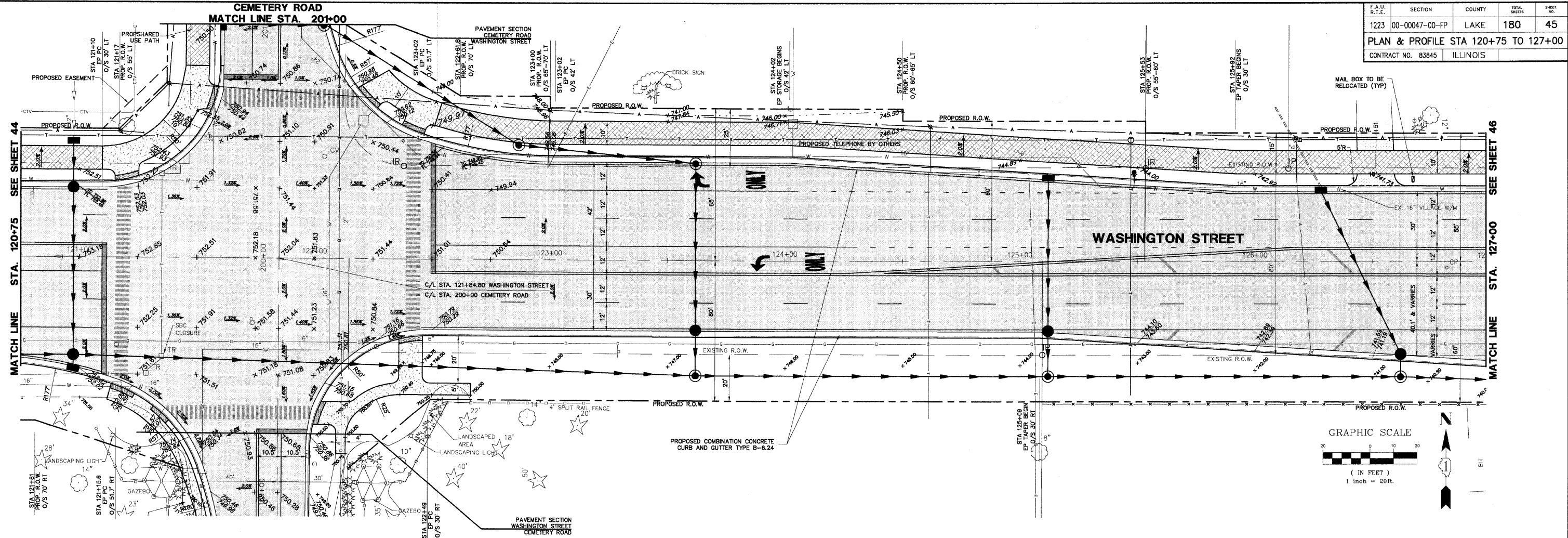


F.A.I. R.T.E.	SECTION	COUNTY	TOTAL SHEETS	SHEET NO.
1223	00-00047-00-FP	LAKE	180	45
PLAN & PROFILE STA 120+75 TO 127+00				
CONTRACT NO. 83845 ILLINOIS				



PLAN & PROFILE LEGEND

	HOT-MIX ASPHALT PAVEMENT (FULL DEPTH), 12"		TYPE B-6.24 COMB. CONC. CURB AND GUTTER (B-6.12 CEMETERY ROAD)
	PROPOSED SHARED USE PATH		DEPRESSED SECTION CURB AND GUTTER
	2" HOT-MIX ASPHALT SURFACE COURSE, MIX 'D', N50		5" P.C.C. SIDEWALK
	1" HOT-MIX ASPHALT BINDER COURSE, IL-19.0, N50		6" AGGREGATE BASE COURSE, TYPE 'B'
	6" AGGREGATE BASE COURSE, TYPE 'B'		CURB RAMP FOR SIDEWALK
	PROPOSED MINOR ACCESS DRIVEWAY		DETECTABLE WARNING
	2 1/2" HOT-MIX ASPHALT SURFACE COURSE, MIX 'D', N50		
	6" AGGREGATE BASE COURSE, TYPE 'B'		

PLANS PREPARED BY:
GEWALT HAMILTON ASSOCIATES, INC.
 Consulting Engineers & Surveyors
 850 Forest Edge Drive
 Vernon Hills, IL 60061
 (847) 478-9700
 (847) 478-9701 Fax

REVISIONS	
NAME	DATE
REV.-1 IDOT COMMENTS	02-03-06
REV.-2 PLANS STAGED	06-02-06
REV.-5 PRE-FINAL SUB	02-20-09
PS&S SUBMITTAL	04-10-09

ILLINOIS DEPARTMENT OF TRANSPORTATION
PLAN AND PROFILE
STA 120+75 TO 127+00
PROPOSED ROADWAY RECONSTRUCTION
WASHINGTON STREET
 SCALE: H: 1"=20' V: 1"=5'
 DATE: 10-05-04
 DRAWN BY: CGP
 DESIGNED BY: TPG
 CHECKED BY: BLS