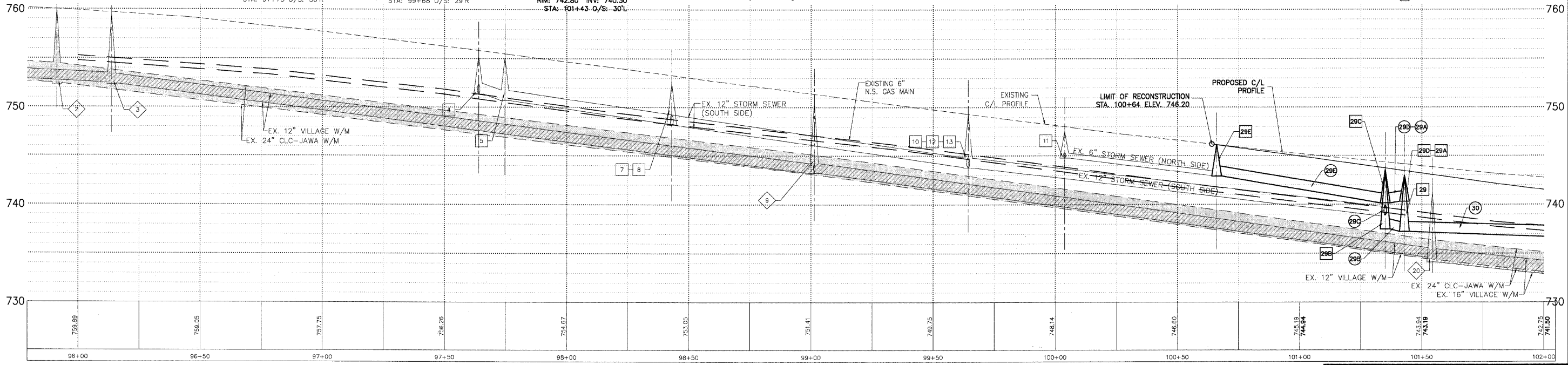


WASHINGTON STREET

- EX. W/M VALVE VAULT
RIM: 759.92 T/P: UNKWN
STA: 95+92 O/S: 34'L
- EX. W/M VALVE VAULT
RIM: 759.43 T/P: 753.38
STA: 96+14 O/S: 52'R
- EX. STORM MANHOLE
RIM: 760.23 INV: 754.98
15" W INV: 755.13
STA: 95+66 O/S: 80'R
- EX. STORM INLET
RIM: 755.26 INV: 751.76
STA: 97+74 O/S: 27'L
- EX. STORM MANHOLE
RIM: 755.25 INV: 751.35
STA: 97+64 O/S: 41'R
- EX. STORM MANHOLE
RIM: 755.09 INV: 750.69
12" SW INV: 750.74
STA: 97+75 O/S: 30'R
- EX. STORM INLET
RIM: 752.29 INV: 749.34
STA: 98+45 O/S: 43'R
- EX. STORM MANHOLE
RIM: 752.44 INV: 748.19
12" S INV: 749.39
STA: 98+43 O/S: 43'R
- EX. W/M VALVE VAULT
RIM: 750.46 T/P: 744.21
6" S T/P: 744.11
STA: 99+01 O/S: 56'R
- EX. STORM INLET
RIM: 748.85 INV: 744.90
6" S INV: 746.25
STA: 99+59 O/S: 27'L
- EX. STORM CATCHBASIN
RIM: 748.65 INV: 744.00
12" NW INV: 744.05
STA: 99+68 O/S: 29'R
- EX. STORM MANHOLE
RIM: 749.32 INV: 743.77
12" NE & W INV: 743.82
STA: 99+64 O/S: 33'R
- EX. STORM MANHOLE
RIM: 747.50 INV: 744.75
6" S INV: 744.80
STA: 100+04 O/S: 33'L
- STORM SEWER MANHOLE
TY 'A' 48" TY 1 FR & CL
RIM: 745.15 INV: 742.90
12" SE INV: 740.14
STA: 101+35 O/S: 34'L
- STORM SEWER INLET
TY 'A' 24" TY 24 FR & GR
RIM: 742.80 INV: 740.30
STA: 101+43 O/S: 30'L
- EX. W/M VALVE VAULT
RIM: 741.26 T/P: UNKWN
STA: 101+54 O/S: 52'R
- STORM SEWER CATCHBASIN
TY 'A' 48" TY 1 FR & CL
RIM: 742.65 INV: 737.49
12" N INV: 738.79
12" NE INV: 740.14
STA: 101+35 O/S: 33'R
- STORM SEWER INLET
TY 'A' 24" TY 24 FR & GR
RIM: 742.80 INV: 740.30
STA: 101+43 O/S: 30'L
- STORM SEWER MANHOLE
TY 'A' 48" TY 1 FR & CL
RIM: 742.96 INV: 737.25
STA: 101+43 O/S: 40'R
- EX. W/M VALVE VAULT
RIM: 741.26 T/P: UNKWN
STA: 101+54 O/S: 52'R

- DRAINAGE & UTILITY PLAN LEGEND**
- 5 EXISTING SANITARY STRUCTURE
 - 9 EXISTING SANITARY SEWER
 - 9 EXISTING WATERMAIN STRUCTURE
 - W EXISTING WATERMAIN
 - 23 EXISTING STORM SEWER STRUCTURE
 - 37 EXISTING STORM SEWER
 - 37 PROPOSED STORM SEWER STRUCTURE
 - 37 PROPOSED STORM SEWER
 - 37A PROPOSED STORM SEWER PIPE
 - 37B PROPOSED STORM SEWER MANHOLE
 - 37C PROPOSED STORM SEWER CATCHBASIN
 - 37D PROPOSED STORM SEWER INLET
 - X05 PROPOSED UTILITY CROSSING

NOTE:
OFFSETS PROVIDED ARE FROM CENTER LINE
TO CENTER LINE OF STRUCTURE.



STORM OVER WATER B/STORM = 741.40 T/WATER = 737.50	X01
STORM OVER WATER B/M. HOLE = 739.60 T/WATER = 736.60	X02
GAS OVER STORM B/GAS = 739.70 T/STORM = 740.20	X03

PLANS PREPARED BY:
GEWALT HAMILTON
ASSOCIATES, INC.
Consulting Engineers & Surveyors
850 Forest Edge Drive
Vernon Hills, IL 60061
(847) 478-9700
(847) 478-9701 Fax

REVISIONS	
NAME	DATE
REV.-1 IDOT COMMENTS	02-03-06
REV.-2 PLANS STAGED	06-02-06
REV.-5 PRE-FINAL SUB	02-20-09
PS&S SUBMITTAL	04-10-09

ILLINOIS DEPARTMENT OF TRANSPORTATION
DRAINAGE AND UTILITY PLAN
STA 95+50 TO 102+00

PROPOSED ROADWAY RECONSTRUCTION
WASHINGTON STREET

SCALE: H: 1"=20' V: 1"=5'
DATE: 10-05-04

DRAWN BY: CGP
DESIGNED BY: TPG
CHECKED BY: BLS