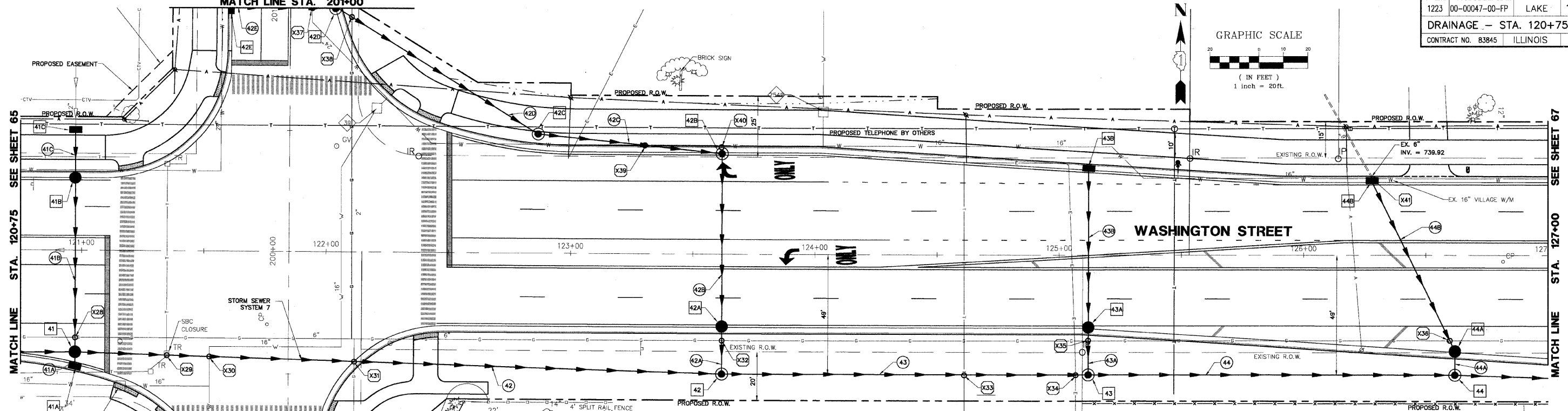
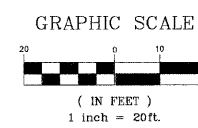
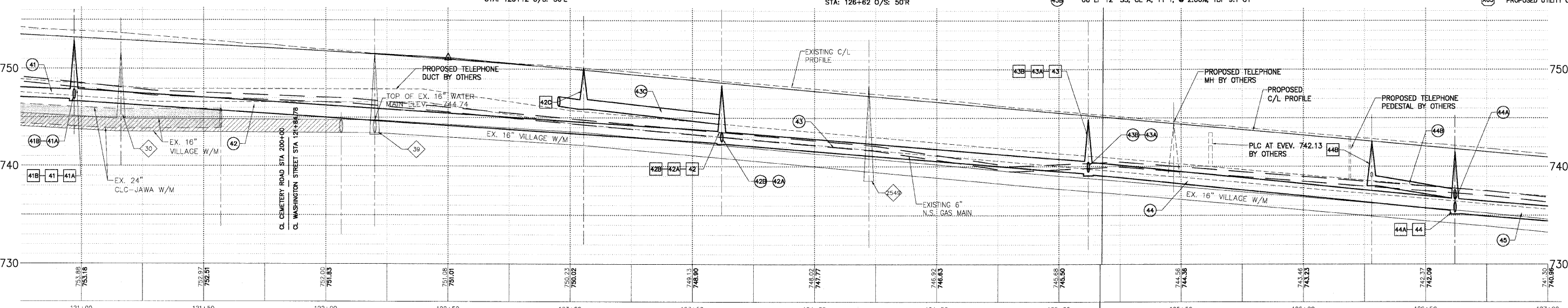


**CEMETERY ROAD
MATCH LINE STA. 201+00**

F.A.U. R.T.E.	SECTION	COUNTY	TOTAL SHEETS	SHEET NO.
1223	00-00047-00-FP	LAKE	180	66
DRAINAGE - STA. 120+75 TO 127+00				
CONTRACT NO. 83845 ILLINOIS				



- DRAINAGE & UTILITY PLAN LEGEND**
- 5 EXISTING SANITARY STRUCTURE
 - 6 EXISTING SANITARY SEWER
 - 9 EXISTING WATERMAIN STRUCTURE
 - 10 EXISTING WATERMAIN
 - 23 EXISTING STORM SEWER STRUCTURE
 - 37 EXISTING STORM SEWER
 - 37A PROPOSED STORM SEWER STRUCTURE
 - 37B PROPOSED STORM SEWER
 - 37C PROPOSED STORM SEWER PIPE
 - 37D PROPOSED STORM SEWER MANHOLE
 - 37E PROPOSED STORM SEWER CATCHBASIN
 - 37F PROPOSED STORM SEWER INLET
 - 37G PROPOSED UTILITY CROSSING
- STORM SEWER INLET**
 TY 'A' 24" TY 1 FR & GR
 RIM: 752.20 INV: 748.52
 STA: 120+97 O/S: 50'L
- STORM SEWER INLET**
 TY 'A' 24" TY 24 FR & GR
 RIM: 752.18 INV: 747.01
 STA: 120+97 O/S: 47'R
- STORM SEWER MANHOLE**
 TY 'A' 48" TY 24 FR & GR
 RIM: 747.67 INV: 744.39
 STA: 123+62 O/S: 43'L
- STORM SEWER CATCHBASIN**
 TY 'A' 48" TY 24 FR & GR
 RIM: 747.91 INV: 742.93
 STA: 123+62 O/S: 31'R
- STORM SEWER MANHOLE**
 TY 'A' 48" TY 8 GR
 RIM: 748.37 INV: 741.34
 12" N INV: 741.59
 12" N INV: 742.55
 STA: 123+62 O/S: 49'R
- STORM SEWER INLET**
 TY 'A' 24" TY 24 FR & GR
 RIM: 744.40 INV: 741.15
 STA: 125+12 O/S: 36'L
- STORM SEWER MANHOLE**
 TY 'A' 48" TY 8 GR
 RIM: 744.50 INV: 739.83
 12" N INV: 736.32
 STA: 125+12 O/S: 30'R
- STORM SEWER CATCHBASIN**
 TY 'A' 48" TY 24 FR & GR
 RIM: 744.40 INV: 739.83
 12" N INV: 736.32
 STA: 126+62 O/S: 50'R
- STORM SEWER INLET**
 TY 'A' 48" TY 8 GR
 RIM: 744.85 INV: 738.34
 12" N INV: 739.45
 STA: 125+12 O/S: 49'R
- STORM SEWER INLET**
 TY 'A' 24" TY 24 FR & GR
 RIM: 741.67 INV: 738.06
 EX. 6" NW INV: 739.92
 STA: 126+28 O/S: 31'L
- STORM SEWER CATCHBASIN**
 TY 'A' 48" TY 8 FR & CL
 RIM: 739.90 INV: 736.50
 STA: 126+62 O/S: 39'R
- STORM SEWER MANHOLE**
 TY 'A' 48" TY 8 FR & CL
 RIM: 740.40 INV: 735.34
 12" N INV: 736.32
 STA: 126+62 O/S: 50'R
- 19 LF 12" SS, CL A, TY 1, @ 2.00%, TBF 4.6 CY**
- 72 LF 12" SS, CL A, TY 1, @ 2.00%, TBF 16.5 CY**
- 6 LF 12" SS, CL A, TY 1, @ 2.00%, TBF 1.7 CY**
- 265 LF 12" SS, CL A, TY 1, @ 2.00%, TBF 97.0 CY**
- 42 LF 12" SS, CL A, TY 1, @ 2.14%, TBF 2.3 CY**
- 97 LF 12" SS, CL A, TY 1, @ 1.98%, TBF 21.7 CY**
- 76 LF 12" SS, CL A, TY 1, @ 2.00%, TBF 20.7 CY**
- 73 LF 12" SS, CL A, TY 1, @ 2.00%, TBF 11.4 CY**
- 19 LF 12" SS, CL A, TY 1, @ 2.00%, TBF 8.5 CY**
- 150 LF 15" SS, CL A, TY 1, @ 2.00%, TBF 96.0 CY**
- 66 LF 12" SS, CL A, TY 1, @ 2.00%, TBF 9.1 CY**
- 19 LF 12" SS, CL A, TY 1, @ 2.00%, TBF 7.8 CY**
- 150 LF 15" SS, CL A, TY 1, @ 2.00%, TBF 88.6 CY**
- 78 LF 12" SS, CL A, TY 1, @ 2.00%, TBF 10.7 CY**
- 9 LF 12" SS, CL A, TY 1, @ 2.00%, TBF 7.3 CY**



GAS OVER STORM B/GAS = 749.10 T/STORM = 748.40	GAS OVER STORM B/GAS = 749.50 T/STORM = 744.20	GAS OVER STORM B/GAS = 738.90 T/STORM = 737.90	STORM MH OVER WATER B/STORM = 743.70 T/WATER = 741.70
SBC OVER WATER	TELEPHONE OVER STORM	STORM OVER EX. WATER B/STORM: 747.70 T/WATER: 745.70	INLET OVER WATER B/INLET = 737.40 T/WATER = 735.40
STORM OVER WATER B/STORM = 745.60 T/WATER = 743.60	ELECTRIC OVER STORM	STORM OVER GAS B/STORM = 747.50 T/GAS = 746.50	
GAS OVER STORM B/GAS = 747.80 T/STORM = 746.00	GAS OVER STORM B/GAS = 742.10 T/STORM = 741.10	STORM OVER WATER B/STORM = 744.70 T/WATER = 742.70	

PLANS PREPARED BY:
GEWALT HAMILTON
 ASSOCIATES, INC.
 Consulting Engineers & Surveyors
 850 Forest Ridge Drive
 Vernon Hills, IL 60061
 (847) 478-9700
 (847) 478-9701 Fax

REVISIONS	
NAME	DATE
REV.-1 IDOT COMMENTS	02-03-06
REV.-2 PLANS STAGED	06-02-06
REV.-5 PRE-FINAL SUB	02-20-09
PS&S SUBMITTAL	04-10-09

ILLINOIS DEPARTMENT OF TRANSPORTATION
DRAINAGE AND UTILITY PLAN
STA. 120+75 TO 127+00
PROPOSED ROADWAY RECONSTRUCTION
WASHINGTON STREET

SCALE: H: 1"=20' V: 1"=5'
 DATE: 10-05-04

DRAWN BY: CGP
 DESIGNED BY: TPG
 CHECKED BY: BLS