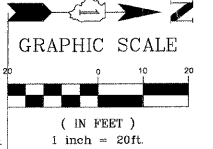


CONTRACTOR SHALL PROVIDE TEMPORARY DRAINAGE SPECIFICALLY AT THE PROFILE LOW POINTS. RIP RAP SEDIMENT BASINS, TEMPORARY DITCHING, TEMPORARY UNDERDRAINS SHALL BE USED TO FACILITATE POSITIVE DRAINAGE AWAY FROM THE PROPOSED AGGREGATE SUBGRADE. IT IS RECOMMENDED THAT THE PROPOSED CULVERT EXTENSION WORK IS COMPLETED INDRY CONDITIONS.

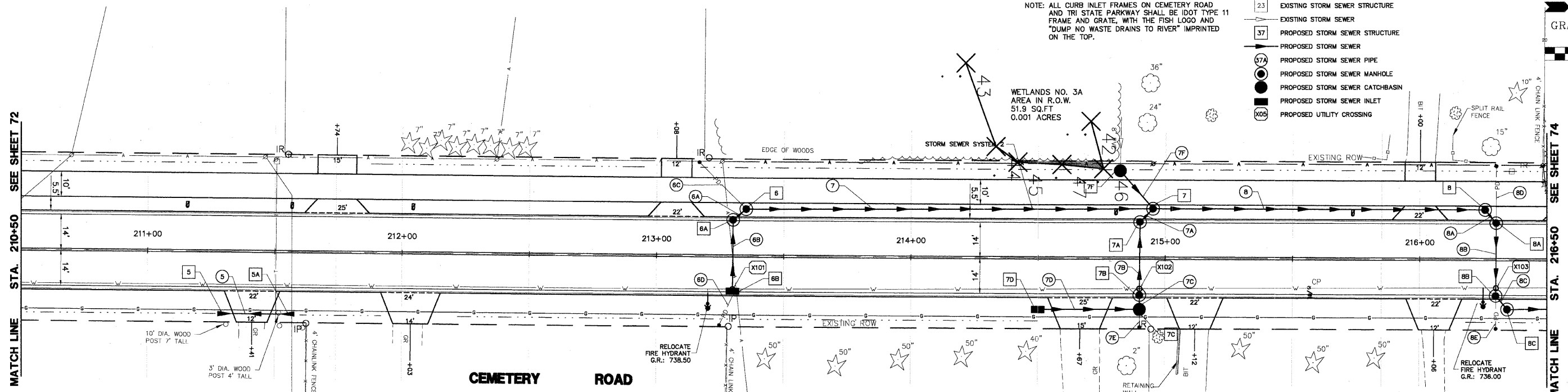
- DRAINAGE & UTILITY PLAN LEGEND**
- 5 EXISTING SANITARY STRUCTURE
 - 9 EXISTING WATERMAIN STRUCTURE
 - W EXISTING WATERMAIN
 - 23 EXISTING STORM SEWER STRUCTURE
 - 37 EXISTING STORM SEWER
 - PROPOSED STORM SEWER STRUCTURE
 - PROPOSED STORM SEWER
 - 57A PROPOSED STORM SEWER PIPE
 - PROPOSED STORM SEWER MANHOLE
 - PROPOSED STORM SEWER CATCHBASIN
 - PROPOSED STORM SEWER INLET
 - X05 PROPOSED UTILITY CROSSING

F.A.U. R.T.E.	SECTION	COUNTY	TOTAL SHEETS	SHEET NO.
2903	00-00047-00-FP	LAKE	180	73
DRAINAGE - STA 210+50 TO 216+50				
CONTRACT NO. 83845		ILLINOIS		

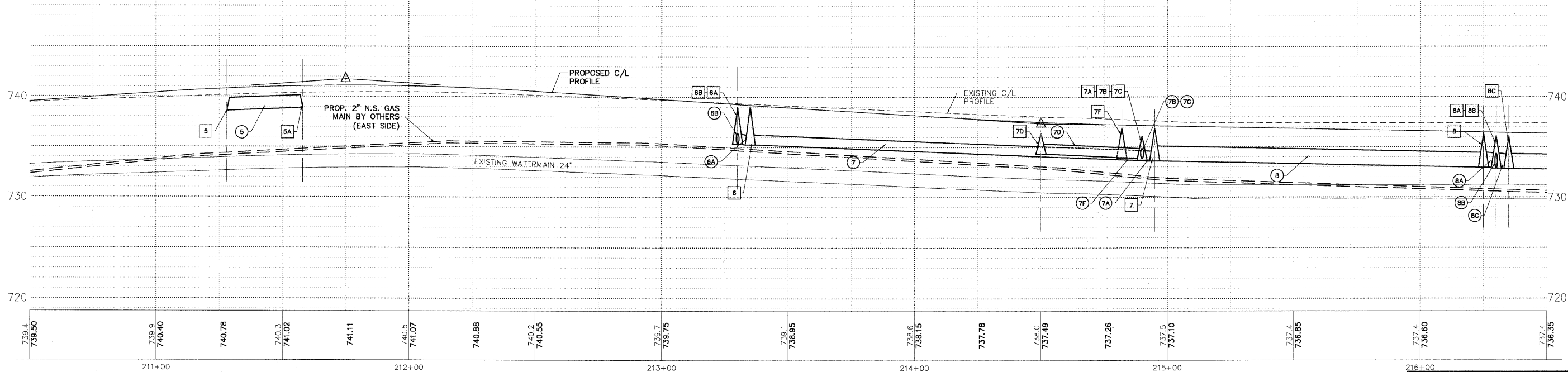


NOTE: ALL CURB INLET FRAMES ON CEMETERY ROAD AND TRI STATE PARKWAY SHALL BE IDOT TYPE 11 FRAME AND GRATE, WITH THE FISH LOGO AND "DUMP NO WASTE DRAINS TO RIVER" IMPRINTED ON THE TOP.

WETLANDS NO. 3A
AREA IN R.O.W.
51.9 SQ.FT
0.001 ACRES



- | | | | | | | | |
|---|--|--|---|--|---|--|--|
| <p>STORM FLARED END SECTION
15" INV: 738.60
STA: 211+28 O/S: 24'R</p> <p>STORM FLARED END SECTION
15" INV: 738.90
STA: 211+58 O/S: 24'R</p> <p>STORM SEWER INLET
TY 'A' 24" TY 11 FR & GR
RIM: 739.24 INV: 735.58
STA: 213+30 O/S: 14'L</p> | <p>STORM SEWER MANHOLE
TY 'A' 48" TY 11 FR & CL
RIM: 739.24 INV: 733.30
STA: 213+30 O/S: 14'L</p> <p>STORM SEWER MANHOLE
TY 'A' 48" TY 1 FR & CL
RIM: 739.08 INV: 735.25
STA: 213+35 O/S: 19'L</p> <p>STORM SEWER MANHOLE
TY 'A' 48" TY 1 FR & CL
RIM: 736.86 S INV: 734.05
N&E&W INV 733.61
STA: 214+95 O/S: 20'L</p> | <p>STORM SEWER CATCHBASIN
TY 'C' 24" TY 8 FR & CL
RIM: 736.00 INV: 733.90
8" INV: 733.95
STA: 214+83 O/S: 35'L</p> <p>STORM SEWER MANHOLE
TY 'A' 48" TY 11 FR & GR
RIM: 736.82 INV: 733.68
12" E INV: 733.70
STA: 214+90 O/S: 14'L</p> <p>STORM SEWER MANHOLE
TY 'A' 48" TY 11 FR & GR
RIM: 736.82 INV: 733.82
STA: 214+90 O/S: 14'R</p> | <p>STORM SEWER INLET
TY 'A' 24" TY 8 GR
RIM: 736.40 INV: 734.27
STA: 214+50 O/S: 20'R</p> <p>STORM SEWER CATCHBASIN
TY 'A' 48" TY 8 GR
RIM: 736.10 INV: 733.87
STA: 214+90 O/S: 20'R</p> <p>STORM SEWER MANHOLE
TY 'A' 48" TY 1 FR & CL
RIM: 736.50 INV: 732.94
STA: 216+25 O/S: 20'L</p> | <p>STORM SEWER MANHOLE
TY 'A' 48" TY 11 FR & GR
RIM: 736.11 INV: 732.91
STA: 216+30 O/S: 14'L</p> <p>STORM SEWER MANHOLE
TY 'A' 48" TY 11 FR & GR
RIM: 736.11 INV: 732.84
STA: 216+30 O/S: 14'R</p> <p>STORM SEWER MANHOLE
TY 'A' 48" TY 1 FR & CL
RIM: 736.20 INV: 732.80
STA: 216+35 O/S: 20'R</p> | <p>NOTE: OFFSETS PROVIDED ARE FROM CENTER LINE TO CENTER LINE OF STRUCTURE.</p> | <p>5 30 LF 15" SS, CL A, TY 1, @ 1.00% TBF 4.0 CY</p> <p>6C 26 LF 4" SS, PVC SDR 35, @ 1.00% TBF 0.0 CY</p> <p>6B 28 LF 12" SS, CL A, TY 1, @ 1.00% TBF 4.4 CY</p> <p>6A 5 LF 12" SS, CL A, TY 1, @ 1.00% TBF 1.4 CY</p> <p>6D 12 LF 4" SS, PVC SDR 35, @ 1.00% TBF 0.0 CY</p> <p>7 160 LF 12" SS, CL A, TY 1, @ 0.75% TBF 36.8 CY</p> <p>7F 20 LF 12" SS, CL A, TY 1, @ 1.45% TBF 3.2 CY</p> <p>7A 7 LF 12" SS, CL A, TY 1, @ 1.00% TBF 1.5 CY</p> <p>7B 28 LF 12" SS, CL A, TY 1, @ 0.43% TBF 2.2 CY</p> | <p>7C 5 LF 12" SS, CL A, TY 1, @ 1.00% TBF 0.8 CY</p> <p>7D 40 LF 12" SS, CL A, TY 1, @ 1.00% TBF 6.0 CY</p> <p>7E 8 LF 4" SS, PVC SDR 35, @ 1.00% TBF 0.0 CY</p> <p>8 130 LF 15" SS, CL A, TY 1, @ 0.52% TBF 38.3 CY</p> <p>8A 7 LF 15" SS, CL A, TY 1, @ 0.43% TBF 2.4 CY</p> <p>8B 28 LF 18" SS, DIP, CL 52, @ 0.39% TBF 5.6 CY</p> <p>8C 6 LF 18" SS, CL A, TY 1, @ 0.32% TBF 2.3 CY</p> <p>8D 20 LF 4" SS, PVC SDR 35, @ 1.00% TBF 0.0 CY</p> <p>8E 12 LF 4" SS, PVC SDR 35, @ 1.00% TBF 0.0 CY</p> |
|---|--|--|---|--|---|--|--|



- STORM OVER WATER
B/STM = 735.40
T/WATER = 733.70 (X101)
- STORM OVER WATER
B/STM = 733.60
T/WATER = 731.40 (X102)
- STORM OVER WATER
B/STM = 731.50
T/WATER = 730.00 (X103)

PLANS PREPARED BY:
GEWALT HAMILTON
ASSOCIATES, INC.
Consulting Engineers & Surveyors
860 Forest Edge Drive
Vernon Hills, IL 60061
(847) 478-9700
(847) 478-9701 Fax

REVISIONS	
NAME	DATE
REV.-1 IDOT COMMENTS	02-03-06
REV.-2 PLANS STAGED	06-02-06
REV.-5 PRE-FINAL SUB	02-20-09
PS&S SUBMITTAL	04-10-09

ILLINOIS DEPARTMENT OF TRANSPORTATION
DRAINAGE AND UTILITY PLAN
STA 210+50 to 216+50
PROPOSED ROADWAY WIDENING
AND INTERSECTION IMPROVEMENTS
CEMETERY ROAD

SCALE: H: 1"=20' V: 1"=5'
DATE: 10-05-04

DRAWN BY: CGP
DESIGNED BY: TPG
CHECKED BY: BLS