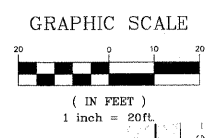


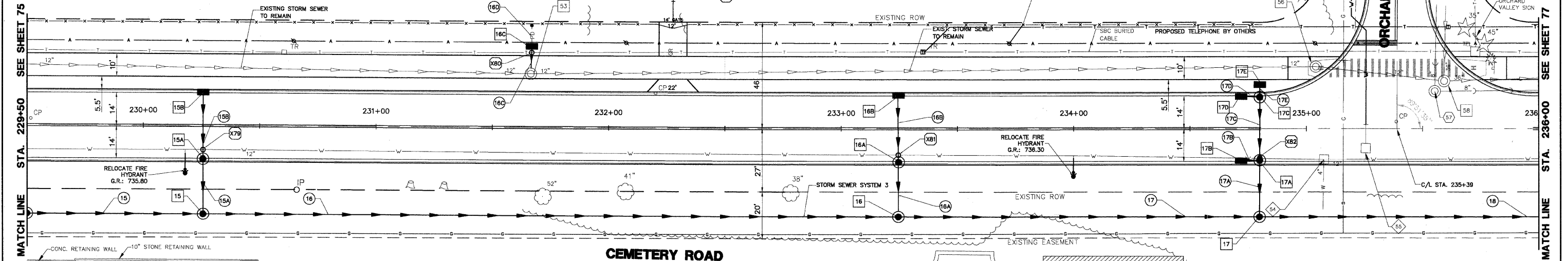
- DRAINAGE & UTILITY PLAN LEGEND**
- 5 EXISTING SANITARY STRUCTURE
 - 9 EXISTING SANITARY SEWER
 - W EXISTING WATERMAIN STRUCTURE
 - 23 EXISTING STORM SEWER STRUCTURE
 - 37 EXISTING STORM SEWER
 - 37 PROPOSED STORM SEWER STRUCTURE
 - PROPOSED STORM SEWER
 - 57A PROPOSED STORM SEWER PIPE
 - PROPOSED STORM SEWER MANHOLE
 - PROPOSED STORM SEWER CATCHBASIN
 - PROPOSED STORM SEWER INLET
 - X08 PROPOSED UTILITY CROSSING

CONTRACTOR SHALL PROVIDE TEMPORARY DRAINAGE, SPECIFICALLY AT THE PROFILE LOW POINTS. RIP RAP SEDIMENT BASINS, TEMPORARY DITCHING, TEMPORARY UNDERDRAINS SHALL BE USED TO FACILITATE POSITIVE DRAINAGE AWAY FROM THE PROPOSED AGGREGATE SUBGRADE. IT IS RECOMMENDED THAT THE PROPOSED CULVERT EXTENSION WORK IS COMPLETED DRY CONDITIONS.

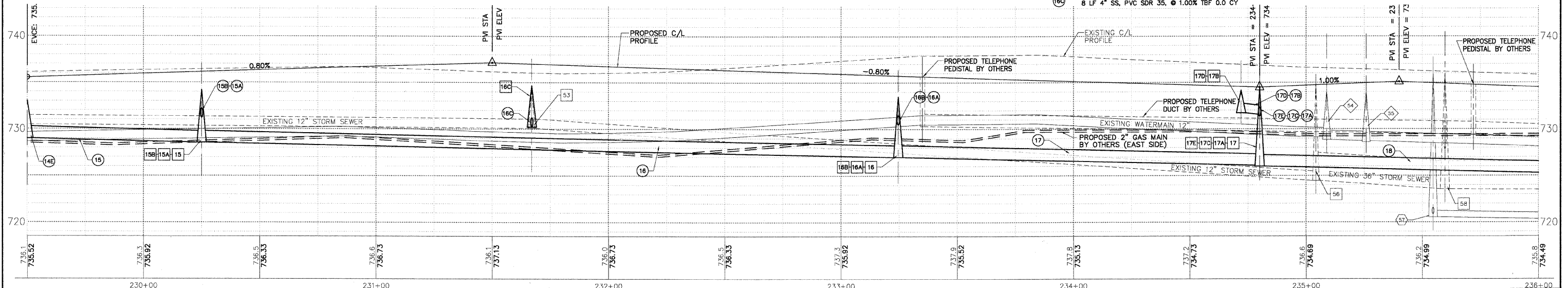


NOTE: ALL CURB INLET FRAMES ON CEMETERY ROAD AND TRI STATE PARKWAY SHALL BE IDOT TYPE 11 FRAME AND GRATE, WITH THE FISH LOGO AND "DUMP NO WASTE DRAINS TO RIVER" IMPRINTED ON THE TOP.

NOTE: OFFSETS PROVIDED ARE FROM CENTER LINE TO CENTER LINE OF STRUCTURE.



Structure ID	Structure Type	Material	Size	Flow	Notes
15	Storm Sewer Manhole	TY 'A'	48" TY B GR	15" S INV: 728.70	W INV: 731.20
15A	Storm Sewer Manhole	TY 'A'	48" TY 11 FR & GR	RIM: 735.99	E&W INV: 732.03
15B	Storm Sewer Inlet	TY 'A'	24" TY 11 FR & GR	RIM: 735.10	INV: 730.18
16	Storm Sewer Manhole	TY 'A'	48" TY B GR	RIM: 733.25	15" N INV: 727.17
16A	Storm Sewer Manhole	TY 'A'	48" TY 11 FR & GR	RIM: 735.18	INV: 730.68
16B	Storm Sewer Inlet	TY 'A'	24" TY 11 FR & GR	RIM: 734.17	INV: 731.71
16C	Storm Sewer Manhole	TY 'A'	48" TY 11 FR & GR	RIM: 734.15	E INV: 731.65
17	Storm Sewer Manhole	TY 'A'	48" TY B GR	RIM: 734.42	15" N INV: 726.21
17A	Storm Sewer Manhole	TY 'A'	48" TY 11 FR & GR	RIM: 734.15	E INV: 731.35
17B	Storm Sewer Inlet	TY 'A'	24" TY 11 FR & GR	RIM: 734.17	INV: 731.71
17C	Storm Sewer Manhole	TY 'A'	48" TY 11 FR & GR	RIM: 734.15	E INV: 731.65
17D	Storm Sewer Inlet	TY 'A'	24" TY 11 FR & GR	RIM: 734.17	INV: 731.71
17E	Storm Sewer Inlet	TY 'A'	24" TY B FR & OL	RIM: 734.25	INV: 731.75
54	EX. W/M VALVE VAULT			RIM: 735.89	RECON TO: 734.50
55	EX. W/M VALVE VAULT			RIM: 736.20	RECON TO: 734.78
56	EXISTING STORM SEWER MANHOLE			RIM: 734.99	ADJ TO: 734.90
57	EX. SANITARY MANHOLE			RIM: 736.06	RECON TO: 734.70
58	EXISTING STORM SEWER MANHOLE			RIM: 735.94	RECON TO: 734.84
53	Storm Sewer Manhole	TY 'A'	24" TY 23 FR & GR	RIM: 734.23	RECON TO: 736.62



STORM OVER WATER	B/SIM = 732.00	T/WATER = 730.50
TELEPHONE OVER STORM	X08	
STORM OVER WATER	B/SIM = 730.50	T/WATER = 729.00
STORM OVER WATER	B/SIM = 731.20	T/WATER = 728.70

PLANS PREPARED BY:
GEWALT HAMILTON ASSOCIATES, INC.
 Consulting Engineers & Surveyors
 850 Forest Edge Drive
 Vernon Hills, IL 60061
 (847) 478-9700
 (847) 478-9701 Fax

REVISIONS	
NAME	DATE
REV.-1 IDOT COMMENTS	02-03-06
REV.-2 PLANS STAGED	06-02-06
REV.-5 PRE-FINAL SUB	02-20-09
PS&S SUBMITTAL	04-10-09

ILLINOIS DEPARTMENT OF TRANSPORTATION
DRAINAGE AND UTILITY PLAN
STA 229+50 TO 236+00
PROPOSED ROADWAY WIDENING
AND INTERSECTION IMPROVEMENTS
CEMETERY ROAD

SCALE: H: 1"=20' V: 1"=5'
 DATE: 10-05-04

DRAWN BY: CGP
 DESIGNED BY: TPG
 CHECKED BY: BLS