

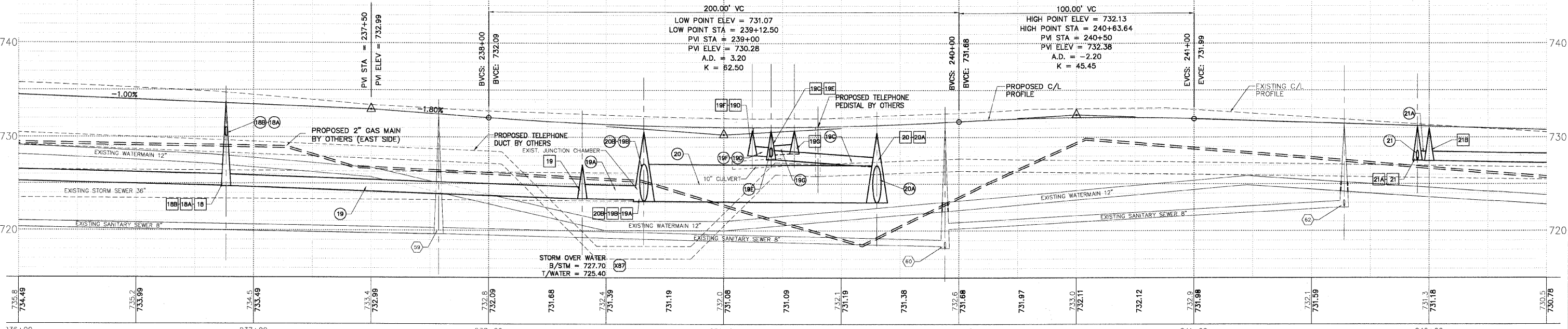
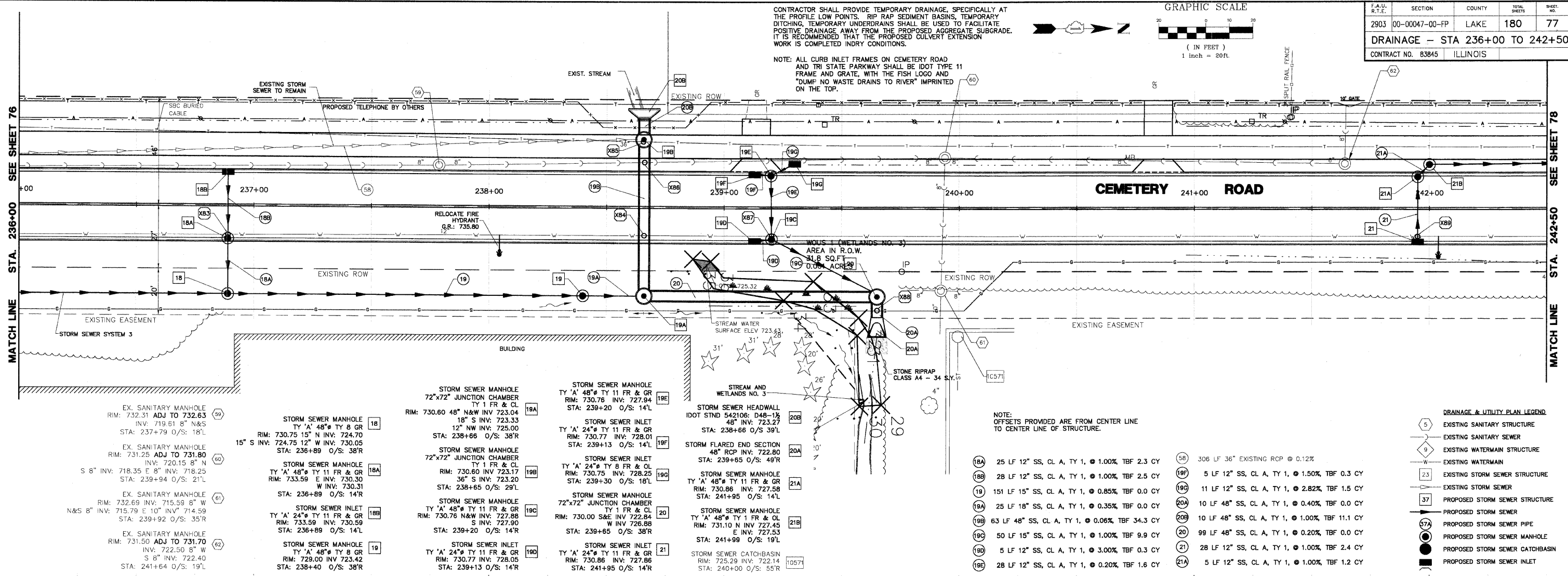
CONTRACTOR SHALL PROVIDE TEMPORARY DRAINAGE, SPECIFICALLY AT THE PROFILE LOW POINTS. RIP RAP SEDIMENT BASINS, TEMPORARY DITCHING, TEMPORARY UNDERDRAINS SHALL BE USED TO FACILITATE POSITIVE DRAINAGE AWAY FROM THE PROPOSED AGGREGATE SUBGRADE. IT IS RECOMMENDED THAT THE PROPOSED CULVERT EXTENSION WORK IS COMPLETED IN DRY CONDITIONS.

GRAPHIC SCALE



F.A.U. R.T.E.	SECTION	COUNTY	TOTAL SHEETS	SHEET NO.
2903	00-00047-00-FP	LAKE	180	77
DRAINAGE - STA 236+00 TO 242+50				
CONTRACT NO. 83845		ILLINOIS		

NOTE: ALL CURB INLET FRAMES ON CEMETERY ROAD AND TRI STATE PARKWAY SHALL BE IDOT TYPE 11 FRAME AND GRATE, WITH THE FISH LOGO AND "DUMP NO WASTE DRAINS TO RIVER" IMPRINTED ON THE TOP.



<p>STORM OVER WATER B/STM = 730.10 T/WATER = 728.10</p> <p>STORM OVER WATER B/STM = 722.60 T/WATER = 720.60</p> <p>TELEPHONE UNDER STORM MH</p> <p>STORM OVER SANITARY B/STM = 722.65 T/SAN = 720.46</p>	<p>STORM OVER WATER B/STM = 727.70 T/WATER = 725.40</p> <p>STORM OVER GAS B/STM = 722.30 T/GAS = 721.00</p> <p>STORM OVER WATER B/STM = 727.70 T/WATER = 725.50</p>	<p>STORM SEWER MANHOLE 72"x72" JUNCTION CHAMBER TY 1 FR & CL RIM: 730.60 48" N&W INV: 723.04 18" S INV: 723.33 12" NW INV: 725.00 STA: 238+66 O/S: 38'R</p> <p>STORM SEWER MANHOLE 72"x72" JUNCTION CHAMBER TY 1 FR & CL RIM: 730.60 INV: 723.17 36" S INV: 723.20 STA: 238+65 O/S: 29'L</p> <p>STORM SEWER MANHOLE TY 'A' 48" TY 11 FR & GR RIM: 730.76 N&W INV: 727.88 W INV: 727.90 STA: 239+20 O/S: 14'L</p> <p>STORM SEWER INLET TY 'A' 24" TY 11 FR & GR RIM: 730.77 INV: 728.01 STA: 239+13 O/S: 14'R</p> <p>STORM SEWER MANHOLE TY 'A' 48" TY 11 FR & GR RIM: 730.76 INV: 727.88 W INV: 727.88 STA: 239+20 O/S: 14'L</p> <p>STORM SEWER INLET TY 'A' 24" TY 11 FR & GR RIM: 730.77 INV: 728.05 STA: 239+13 O/S: 14'R</p> <p>STORM SEWER MANHOLE TY 'A' 48" TY 11 FR & GR RIM: 730.76 INV: 727.84 W INV: 727.84 STA: 239+30 O/S: 18'L</p> <p>STORM SEWER INLET TY 'A' 24" TY 8 FR & OL RIM: 730.75 INV: 728.25 STA: 239+13 O/S: 14'L</p> <p>STORM SEWER MANHOLE 72"x72" JUNCTION CHAMBER TY 1 FR & CL RIM: 730.00 S&E INV: 722.84 W INV: 726.88 STA: 239+65 O/S: 38'R</p> <p>STORM SEWER INLET TY 'A' 24" TY 11 FR & GR RIM: 730.86 INV: 727.86 STA: 241+95 O/S: 19'L</p> <p>STORM SEWER MANHOLE TY 'A' 48" TY 11 FR & OL RIM: 731.10 INV: 727.45 E INV: 727.53 STA: 241+99 O/S: 19'L</p> <p>STORM SEWER CATCHBASIN RIM: 725.29 INV: 722.14 STA: 240+00 O/S: 55'R</p> <p>STORM SEWER HEADWALL IDOT STD 542106: D48-1 1/2 48" INV: 723.27 STA: 238+66 O/S: 39'L</p> <p>STORM SEWER MANHOLE TY 'A' 48" TY 11 FR & GR RIM: 730.86 INV: 727.58 STA: 241+95 O/S: 14'L</p> <p>STORM SEWER MANHOLE TY 'A' 48" TY 11 FR & OL RIM: 731.10 INV: 727.45 E INV: 727.53 STA: 241+99 O/S: 19'L</p> <p>STORM SEWER CATCHBASIN RIM: 725.29 INV: 722.14 STA: 240+00 O/S: 55'R</p>	<p>25 LF 12" SS, CL A, TY 1, @ 1.00% TBF 2.3 CY</p> <p>28 LF 12" SS, CL A, TY 1, @ 1.00% TBF 2.5 CY</p> <p>151 LF 15" SS, CL A, TY 1, @ 0.85% TBF 0.0 CY</p> <p>25 LF 18" SS, CL A, TY 1, @ 0.35% TBF 0.0 CY</p> <p>63 LF 48" SS, CL A, TY 1, @ 0.06% TBF 34.3 CY</p> <p>50 LF 15" SS, CL A, TY 1, @ 1.00% TBF 9.9 CY</p> <p>5 LF 12" SS, CL A, TY 1, @ 3.00% TBF 0.3 CY</p> <p>28 LF 12" SS, CL A, TY 1, @ 0.20% TBF 1.6 CY</p> <p>306 LF 36" EXISTING RCP @ 0.12%</p> <p>5 LF 12" SS, CL A, TY 1, @ 1.50% TBF 0.3 CY</p> <p>11 LF 12" SS, CL A, TY 1, @ 2.82% TBF 1.5 CY</p> <p>10 LF 48" SS, CL A, TY 1, @ 0.40% TBF 0.0 CY</p> <p>10 LF 48" SS, CL A, TY 1, @ 1.00% TBF 11.1 CY</p> <p>99 LF 48" SS, CL A, TY 1, @ 0.20% TBF 0.0 CY</p> <p>28 LF 12" SS, CL A, TY 1, @ 1.00% TBF 2.4 CY</p> <p>5 LF 12" SS, CL A, TY 1, @ 1.00% TBF 1.2 CY</p>
--	---	---	--

DRAINAGE & UTILITY PLAN LEGEND

- (5) EXISTING SANITARY STRUCTURE
- (9) EXISTING SANITARY SEWER
- (10) EXISTING WATERMAIN STRUCTURE
- (W) EXISTING WATERMAIN
- (23) EXISTING STORM SEWER STRUCTURE
- (S) EXISTING STORM SEWER
- (37) PROPOSED STORM SEWER STRUCTURE
- (S) PROPOSED STORM SEWER
- (57A) PROPOSED STORM SEWER PIPE
- (M) PROPOSED STORM SEWER MANHOLE
- (C) PROPOSED STORM SEWER CATCHBASIN
- (I) PROPOSED STORM SEWER INLET

PLANS PREPARED BY:
GEWALT HAMILTON ASSOCIATES, INC.
Consulting Engineers & Surveyors
850 Forest Edge Drive
Vernon Hills, IL 60061
(815) 478-9700
(815) 478-9700 Fax

REVISIONS	
NAME	DATE
REV.-1 IDOT COMMENTS	02-03-06
REV.-2 PLANS STAGED	06-02-06
REV.-3 LCDOT COMMENTS	11-20-06
PS&S SUBMITTAL	04-10-09

ILLINOIS DEPARTMENT OF TRANSPORTATION
DRAINAGE AND UTILITY PLAN
STA 236+00 TO 242+50
PROPOSED ROADWAY WIDENING
AND INTERSECTION IMPROVEMENTS
CEMETERY ROAD

SCALE: H: 1"=20' V: 1"=5'
DATE: 10-05-04

DRAWN BY: CGP
DESIGNED BY: TPG
CHECKED BY: BLS