

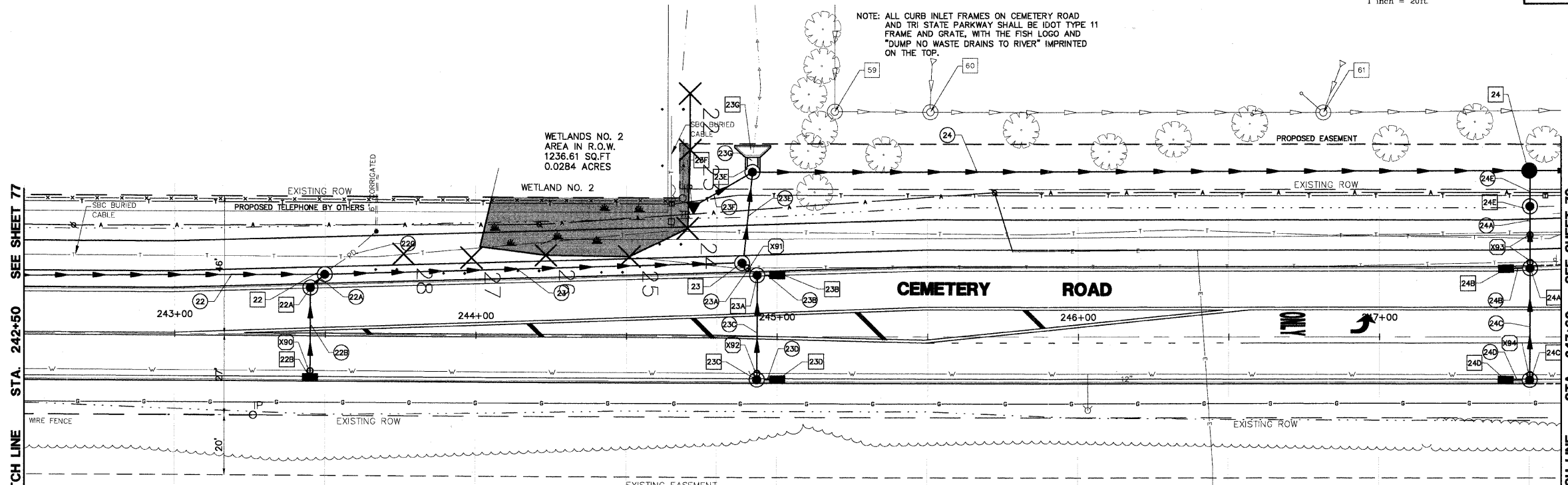
CONTRACTOR SHALL PROVIDE TEMPORARY DRAINAGE, SPECIFICALLY AT THE PROFILE LOW POINTS, RIP RAP SEDIMENT BASINS, TEMPORARY DITCHING, TEMPORARY UNDERDRAINS SHALL BE USED TO FACILITATE POSITIVE DRAINAGE AWAY FROM THE PROPOSED AGGREGATE SUBGRADE. IT IS RECOMMENDED THAT THE PROPOSED CULVERT EXTENSION WORK IS COMPLETED IN DRY CONDITIONS.

GRAPHIC SCALE



(IN FEET)
1 inch = 20ft.

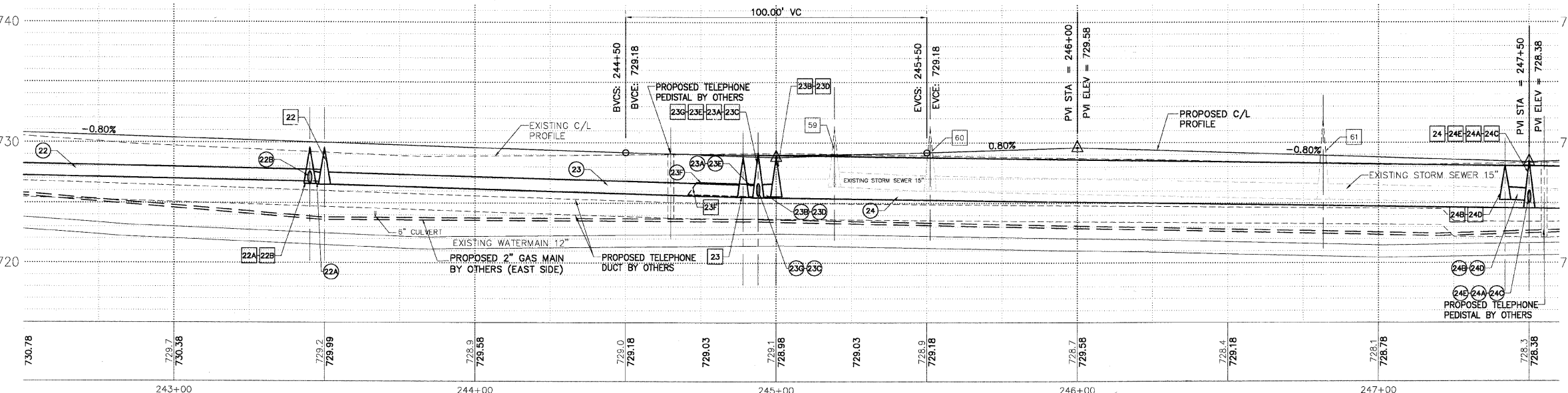
F.A.U. R.T.E.	SECTION	COUNTY	TOTAL SHEETS	SHEET NO.
2903	00-00047-00-FP	LAKE	180	78
DRAINAGE - STA 242+50 TO 247+50				
CONTRACT NO. 83845		ILLINOIS		



<p>STORM SEWER MANHOLE TY 'A' 48" TY 1 FR & CL RIM: 729.55 N INV: 726.50 E INV: 726.53 S & W INV: 726.75 STA: 243+50 O/S: 20'L</p> <p>STORM SEWER MANHOLE TY 'A' 48" TY 11 FR & GR RIM: 729.80 INV: 726.86 STA: 243+45 O/S: 16'L</p> <p>STORM SEWER INLET TY 'A' 24" TY 11 FR & GR RIM: 728.80 INV: 726.86 STA: 243+45 O/S: 14'R</p> <p>STORM SEWER MANHOLE TY 'A' 48" TY 1 FR & CL RIM: 728.98 E&W INV: 725.55 S INV: 725.79 STA: 244+88 O/S: 24'L</p>	<p>STORM SEWER MANHOLE TY 'A' 48" TY 11 FR & GR RIM: 728.60 INV: 725.60 STA: 244+94 O/S: 20'L</p> <p>STORM SEWER INLET TY 'A' 24" TY 11 FR & GR RIM: 728.58 INV: 725.65 STA: 245+00 O/S: 20'L</p> <p>STORM SEWER MANHOLE TY 'A' 48" TY 11 FR & GR RIM: 728.70 INV: 725.71 STA: 244+94 O/S: 14'R</p> <p>STORM SEWER INLET TY 'A' 24" TY 11 FR & GR RIM: 728.69 INV: 725.76 STA: 245+00 O/S: 14'R</p>	<p>STORM SEWER MANHOLE TY 'A' 60" TY 1 FR & CL RIM: 730.60 SE INV: 725.55 N,E&W INV: 725.45 STA: 244+92 O/S: 53'L</p> <p>12" FLARE END SECTION NW INV: 725.70 STA: 244+73 O/S: 43'L</p> <p>STORM SEWER CATCHBASIN TY 'A' 48" TY 1 FR & CL RIM: 728.47 INV: 724.51 STA: 247+50 O/S: 55'L</p> <p>STORM SEWER MANHOLE TY 'A' 48" TY 1 FR & CL RIM: 727.25 INV: 724.63 STA: 247+50 O/S: 43'L</p>	<p>STORM SEWER MANHOLE TY 'A' 48" TY 11 FR & GR RIM: 728.00 W INV: 724.83 S INV: 724.98 STA: 247+42 O/S: 23'L</p> <p>STORM SEWER INLET TY 'A' 24" TY 11 FR & GR RIM: 728.06 INV: 725.06 STA: 247+42 O/S: 23'L</p> <p>STORM SEWER MANHOLE TY 'A' 48" TY 11 FR & GR RIM: 728.06 W INV: 725.18 STA: 247+50 O/S: 14'R</p> <p>STORM SEWER INLET TY 'A' 24" TY 11 FR & GR RIM: 727.25 INV: 725.26 STA: 247+42 O/S: 14'R</p>	<p>NOTE: ALL CURB INLET FRAMES ON CEMETERY ROAD AND TRI STATE PARKWAY SHALL BE IDOT TYPE 11 FRAME AND GRATE, WITH THE FISH LOGO AND "DUMP NO WASTE DRAINS TO RIVER" IMPRINTED ON THE TOP.</p> <p>NOTE: OFFSETS PROVIDED ARE FROM CENTER LINE TO CENTER LINE OF STRUCTURE.</p> <p>STORM SEWER HEADWALL IDOT STND 542106, D42-1X 42" INV: 725.49 STA: 244+92 O/S: 63'L</p> <p>STORM SEWER MANHOLE RIM: 731.14 15" NW INV: 725.34 STA: 245+20 O/S: 73' L</p> <p>STORM SEWER MANHOLE RIM: 731.15 15" NW INV: 725.65 STA: 245+50 O/S: 73' L</p> <p>STORM SEWER MANHOLE RIM: 732.14 15" N INV: 725.29 S, SW & W INV: 725.29 STA: 246+80 O/S: 73' L</p>	<p>22) 151 LF 12" SS, CL A, TY 1, @ 0.46%, TBF 30.1 CY</p> <p>22A) 5 LF 12" SS, CL A, TY 1, @ 1.80%, TBF 1.0 CY</p> <p>22B) 30 LF 12" SS, CL A, TY 1, @ 1.00%, TBF 2.4 CY</p> <p>22C) 22 LF 4" SS, PVC SDR 35, TY 1, @ 1.00% TBF 3.3 CY</p> <p>23) 138 LF 12" SS, CL A, TY 1, @ 0.50%, TBF 28.7 CY</p> <p>23A) 5 LF 12" SS, CL A, TY 1, @ 1.00%, TBF 0.5 CY</p> <p>23B) 5 LF 12" SS, CL A, TY 1, @ 1.00%, TBF 0.4 CY</p> <p>23C) 33 LF 12" SS, CL A, TY 1, @ 0.33%, TBF 2.4 CY</p> <p>23D) 5 LF 12" SS, CL A, TY 1, @ 1.00%, TBF 0.4 CY</p> <p>23E) 29 LF 15" SS, CL A, TY 1, @ 0.34%, TBF 10.1 CY</p> <p>23F) 22 LF 12" SS, CL A, TY 1, @ 0.68%, TBF 0.0 CY</p> <p>23G) 6 LF 42" SS, CL A, TY 1, @ 0.40%, TBF 0.0 CY</p> <p>24) 258 LF 42" SS, CL A, TY 1, @ 0.36%, TBF 0.0 CY</p> <p>24A) 20 LF 12" SS, CL A, TY 1, @ 1.00%, TBF 9.4 CY</p> <p>24B) 8 LF 12" SS, CL A, TY 1, @ 1.00%, TBF 0.6 CY</p> <p>24C) 37 LF 12" SS, CL A, TY 1, @ 1.00%, TBF 2.7 CY</p> <p>24D) 8 LF 12" SS, CL A, TY 1, @ 1.00%, TBF 0.4 CY</p> <p>24E) 12 LF 12" SS, CL A, TY 1, @ 1.00%, TBF 0.0 CY</p>
---	---	--	---	--	---

DRAINAGE & UTILITY PLAN LEGEND

- 5) EXISTING SANITARY STRUCTURE
- 9) EXISTING SANITARY SEWER
- 9) EXISTING WATERMAIN STRUCTURE
- W) EXISTING WATERMAIN
- 23) EXISTING STORM SEWER STRUCTURE
- 23) EXISTING STORM SEWER
- 37) PROPOSED STORM SEWER STRUCTURE
- 22) PROPOSED STORM SEWER
- 22A) PROPOSED STORM SEWER PIPE
- 22B) PROPOSED STORM SEWER MANHOLE
- 22C) PROPOSED STORM SEWER CATCHBASIN
- 22D) PROPOSED STORM SEWER INLET



<p>STORM OVER WATER B/STM = 728.80 T/WATER = 724.50</p> <p>TELEPHONE OVER STORM X91</p> <p>STORM OVER WATER B/STM = 725.50 T/WATER = 723.50</p>	<p>TELEPHONE OVER STORM X93</p> <p>STORM OVER WATER B/STM = 724.95 T/WATER = 722.50</p>	<p>STORM OVER WATER B/STM = 728.80 T/WATER = 724.50</p> <p>TELEPHONE OVER STORM X91</p> <p>STORM OVER WATER B/STM = 725.50 T/WATER = 723.50</p>	<p>TELEPHONE OVER STORM X93</p> <p>STORM OVER WATER B/STM = 724.95 T/WATER = 722.50</p>
---	---	---	---

PLANS PREPARED BY:
GEWALT HAMILTON
ASSOCIATES, INC.
Consulting Engineers & Surveyors
650 Forest Ridge Drive
Vernon Hills, IL 60061
(847) 478-9700
(847) 478-9701 Fax

REVISIONS	
NAME	DATE
REV.-1 IDOT COMMENTS	02-03-06
REV.-2 PLANS STAGED	06-02-06
REV.-5 PRE-FINAL SUB	02-20-09
PS&S SUBMITTAL	04-10-09

ILLINOIS DEPARTMENT OF TRANSPORTATION
DRAINAGE AND UTILITY PLAN
STA 242+50 TO 247+50
PROPOSED ROADWAY WIDENING
AND INTERSECTION IMPROVEMENTS
CEMETERY ROAD

SCALE: H: 1"=20' V: 1"=5'
DATE: 10-05-04

DRAWN BY: CGP
DESIGNED BY: TPG
CHECKED BY: BLS