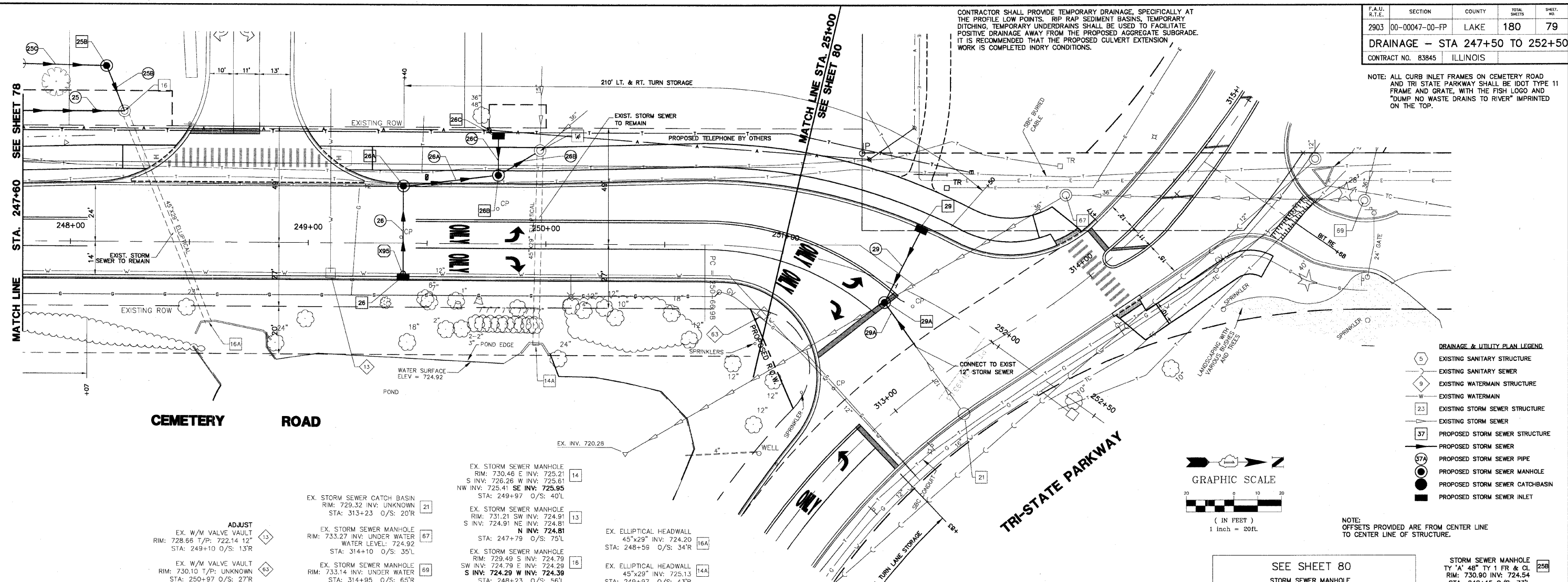


F.A.U. R.T.E.	SECTION	COUNTY	TOTAL SHEETS	SHEET NO.
2903	00-00047-00-FP	LAKE	180	79
<b>DRAINAGE - STA 247+50 TO 252+50</b>				
CONTRACT NO. 83845 ILLINOIS				

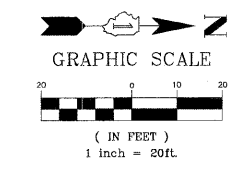
NOTE: ALL CURB INLET FRAMES ON CEMETERY ROAD AND TRI STATE PARKWAY SHALL BE IDOT TYPE 11 FRAME AND GRATE, WITH THE FISH LOGO AND "DUMP NO WASTE DRAINS TO RIVER" IMPRINTED ON THE TOP.

CONTRACTOR SHALL PROVIDE TEMPORARY DRAINAGE, SPECIFICALLY AT THE PROFILE LOW POINTS. RIP RAP SEDIMENT BASINS, TEMPORARY DITCHING, TEMPORARY UNDERDRAINS SHALL BE USED TO FACILITATE POSITIVE DRAINAGE AWAY FROM THE PROPOSED AGGREGATE SUBGRADE. IT IS RECOMMENDED THAT THE PROPOSED CULVERT EXTENSION WORK IS COMPLETED INDRY CONDITIONS.



**DRAINAGE & UTILITY PLAN LEGEND**

- 5 EXISTING SANITARY STRUCTURE
- 9 EXISTING SANITARY SEWER
- 9 EXISTING WATERMAIN STRUCTURE
- W EXISTING WATERMAIN
- 23 EXISTING STORM SEWER STRUCTURE
- 37 EXISTING STORM SEWER
- PROPOSED STORM SEWER STRUCTURE
- PROPOSED STORM SEWER
- 29A PROPOSED STORM SEWER PIPE
- PROPOSED STORM SEWER MANHOLE
- PROPOSED STORM SEWER CATCH-BASIN
- PROPOSED STORM SEWER INLET



NOTE: OFFSETS PROVIDED ARE FROM CENTER LINE TO CENTER LINE OF STRUCTURE.

**CEMETERY ROAD**

**TRI-STATE PARKWAY**

**ADJUST**  
 EX. W/M VALVE VAULT  
 RIM: 728.66 T/P: 722.14 12"  
 STA: 249+10 O/S: 13'R

EX. W/M VALVE VAULT  
 RIM: 730.10 T/P: UNKNOWN  
 STA: 250+97 O/S: 27'R

EX. STORM SEWER MANHOLE  
 RIM: 729.32 INV: UNKNOWN  
 STA: 313+23 O/S: 20'R

EX. STORM SEWER MANHOLE  
 RIM: 733.27 INV: UNDER WATER  
 WATER LEVEL: 724.92  
 STA: 314+10 O/S: 35'L

EX. STORM SEWER MANHOLE  
 RIM: 729.49 S INV: 724.79  
 SW INV: 724.79 E INV: 724.29  
 S INV: 724.29 W INV: 724.39  
 STA: 314+95 O/S: 65'R

EX. STORM SEWER MANHOLE  
 RIM: 730.46 E INV: 725.21  
 S INV: 726.26 W INV: 725.61  
 NW INV: 725.41 SE INV: 725.95  
 STA: 249+97 O/S: 40'L

EX. STORM SEWER MANHOLE  
 RIM: 731.21 SW INV: 724.91  
 S INV: 724.91 NE INV: 724.81  
 N INV: 724.81  
 STA: 247+79 O/S: 75'L

EX. STORM SEWER MANHOLE  
 RIM: 729.49 S INV: 724.79  
 SW INV: 724.79 E INV: 724.29  
 S INV: 724.29 W INV: 724.39  
 STA: 248+23 O/S: 56'L

EX. ELLIPTICAL HEADWALL  
 45"x29" INV: 724.20  
 STA: 248+59 O/S: 34'R

EX. ELLIPTICAL HEADWALL  
 45"x29" INV: 725.13  
 STA: 249+97 O/S: 43'R

**SEE SHEET 80**

STORM SEWER MANHOLE  
 TY 'A' 60" TY 1 FR & CL  
 RIM: 729.98 INV: 725.35  
 NE INV: 725.90  
 EX. 36" SE INV: 720.51  
 STA: 313+22 O/S: 39'L

STORM SEWER INLET  
 TY 'A' 24" TY 11 FR & GR  
 RIM: 729.25 INV: 726.25  
 STA: 313+50 O/S: 56'L

NOTE: PIPE #29 CONNECTION TO EX. STORM MH #67 AND #29A CONNECTION TO PROPOSED ST. MH #29A WILL REQUIRE ISOLATED STORM SEWER DEWATERING.

STORM SEWER MANHOLE  
 TY 'A' 48" TY 1 FR & CL  
 RIM: 730.90 INV: 724.54  
 STA: 248+15 O/S: 73'L

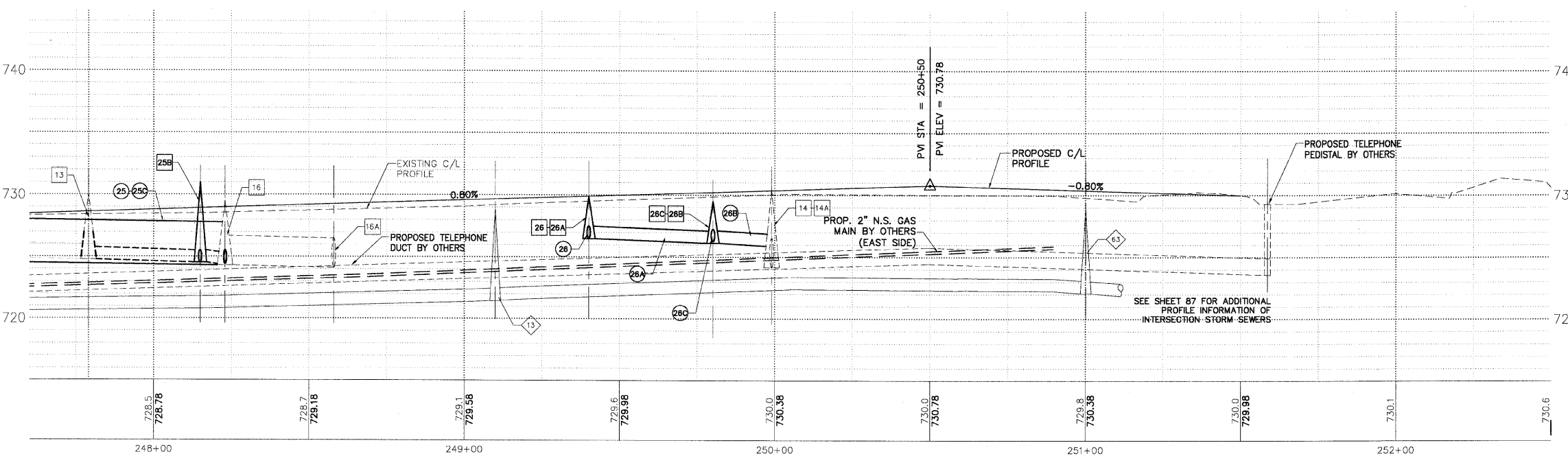
STORM SEWER INLET  
 TY 'A' 24" TY 11 FR & GR  
 RIM: 729.88 INV: 726.88  
 STA: 249+40 O/S: 15'R

STORM SEWER MANHOLE  
 TY 'A' 48" TY 11 FR & GR  
 RIM: 729.88 N INV: 726.50  
 E INV: 726.53  
 STA: 249+40 O/S: 25'L

STORM SEWER MANHOLE  
 TY 'A' 48" TY 1 FR & CL  
 RIM: 729.50 S&NW INV: 726.15  
 W INV: 726.25  
 STA: 249+80 O/S: 28'L

STORM SEWER INLET  
 TY 'A' 24" TY 8 GR  
 RIM: 728.60 W INV: 728.45  
 STA: 249+80 O/S: 45'L

- 25 52 LF 42" SS, CL A, TY 1, @ 0.34%, STRG 0.0 CY
- 25B 20 LF 12" SS, CL A, TY 1, @ 0.75%, TBF 0.0 CY
- 25C 36 LF 12" SS, CL A, TY 1, @ 0.75%, TBF 0.0 CY
- 26 40 LF 12" SS, CL A, TY 1, @ 0.87%, TBF 3.7 CY
- 26A 40 LF 12" SS, CL A, TY 1, @ 0.87%, TBF 9.3 CY
- 26B 20 LF 12" SS, CL A, TY 1, @ 1.00%, TBF 5.9 CY
- 26C 17 LF 12" SS, CL A, TY 1, @ 1.18%, TBF 1.9 CY



STORM OVER WATER  
 B/STM = 726.40  
 T/WATER = 726.50

PLANS PREPARED BY:  
**GEWALT HAMILTON ASSOCIATES, INC.**  
 Consulting Engineers & Surveyors  
 850 Forest Edge Drive  
 Vernon Hills, IL 60061  
 (847) 478-9700  
 (847) 478-9701 Fax

REVISIONS	
NAME	DATE
REV.-1 IDOT COMMENTS	02-03-06
REV.-2 PLANS STAGED	06-02-06
REV.-5 PRE-FINAL SUB	02-20-09
PS&S SUBMITTAL	04-10-09

ILLINOIS DEPARTMENT OF TRANSPORTATION  
**DRAINAGE AND UTILITY PLAN**  
**STA 247+50 TO 252+50**  
**PROPOSED ROADWAY WIDENING**  
**AND INTERSECTION IMPROVEMENTS**  
**CEMETERY ROAD**

SCALE: H: 1"=20' V: 1"=5'  
 DATE: 10-05-04

DRAWN BY: CGP  
 DESIGNED BY: TPG  
 CHECKED BY: BLS