

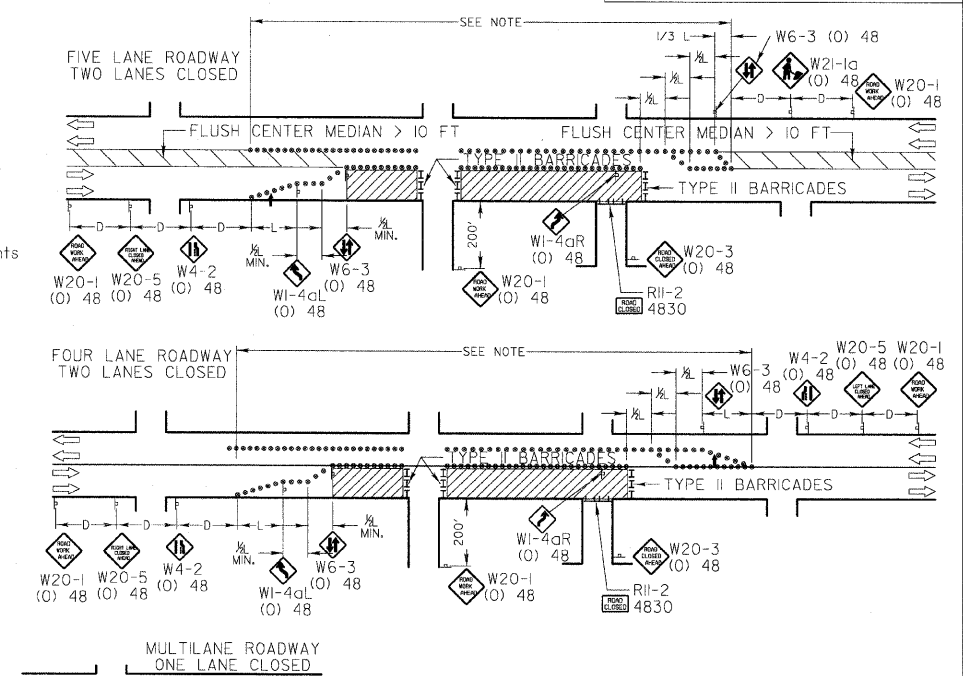
DESIGN NOTES:

- All warning signs shall have minimum dimensions of 48" x 48".
- All signs not on the traveled way shall be post mounted. If the closure time exceeds four calendar days, all signs shall be posted with the bottom of the sign not less than 7' above the edge of pavement. "NO PARKING" signs shall be installed throughout the work area at the discretion of the engineer.
- The distance 'L' shall be defined as:

$$L = \frac{W \cdot S}{1.47 \cdot V}$$
 where W = Width of Closure in FEET and S = Normal Posted Speed Limit in MPH.
 45 mph or greater, L = LANE WIDTH x SPEED LIMIT Lane Width in FEET; Speed Limit in MPH.
- Type II barricades with Type C steady burning lights shall be used in lieu of cones for night operations. All cones and barricades shall be in accordance with Standard 70190.
- Type A flashing lights shall be used on each approach in advance of the work area during hours of darkness and installed above the first two signs in each series and the high level warning devices.
- If the work operation is performed between 9:00 am and 3:00 pm and the work does not exceed 15 minutes, the traffic protection shall be as shown for Standard 70130L. Signs, when required, shall be at the spacing specified in the Advance Warning Sign Spacing Table.
- If the work area is in the parking lane and the parking exists during work hours, a "ROAD WORK AHEAD" sign shall be installed in advance of work area at the spacing specified in the Advance Warning Sign Spacing Table and the area protected with cones or barricades.
- Longitudinal dimensions may be adjusted to fit field conditions.
- Form BT 725 is required.

NOTE:
 CONES AT 25' CENTERS FOR 250'.
 ADDITIONAL CONES MAY BE PLACED AT 50' CENTERS.
 WHEN BARRICADES ARE USED, THE DISTANCE BETWEEN DEVICES MAY BE DOUBLED.

ADVANCE WARNING SIGN SPACING TABLE	DISTANCE BETWEEN SIGNS	SYMBOLS
POSTED SPEED	(D)	• CONE OR BARRICADE
40 MPH OR LESS	200'	⊥ SIGN ON PORTABLE OR PERMANENT SUPPORT
45-50 MPH	350'	← ARROW BOARD
55 MPH	500'	⊥ TYPE II BARRICADE
		⊥ TYPE III BARRICADE



NOT TO SCALE

MODIFIED STANDARD 701606-04

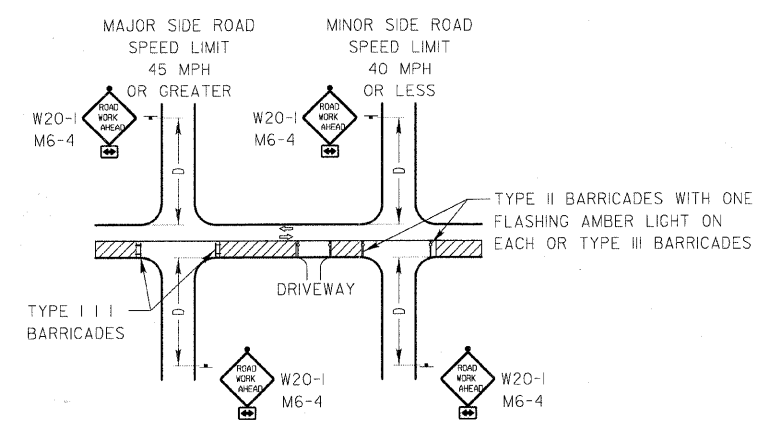
REVISIONS	DATE	APPROVED BY
REVISED	02/01/08	ANTHONY KHAWAJA
DOT REFERENCE		

LakeCounty
 Division of Transportation
 APPROVED BY ANTHONY KHAWAJA
 DATE: APRIL 1, 2007

TYPICAL APPLICATION OF TRAFFIC CONTROL DEVICES
 HIGHWAY CONSTRUCTION, CONTRACT MAINTENANCE
 MULTILANE TWO WAY TRAFFIC, UNDIVIDED OR MULTILANE
 TWO WAY TRAFFIC, DIVIDED WITH FLUSH MEDIAN
 DAY OR NIGHT OPERATIONS

WHERE, AT ANY TIME, ANY VEHICLE, EQUIPMENT, WORKERS OR THEIR ACTIVITIES ENCRUSH ON THE PAVEMENT REQUIRING CLOSURE OF ONE OR MORE TRAFFIC LANES

LC7002



- For a side road with a speed limit of 40 mph or less, the closed portion of the main route shall be protected by blocking with Type II or Type III barricades, 1/3 of the cross section of the closed portion of the roadway.
- For a side road with a speed limit of 45 mph or greater, the closed portion of the main route shall be protected by blocking with Type III barricades, 1/2 of the cross section of the closed portion of the roadway.
- All W20-1 "ROADWORK AHEAD" signs shall be 48" x 48" with fluorescent orange reflective sheeting with an amber Type A flashing light mounted on the sign.
- When the side road lies between the beginning of the mainline signing and the work zone, a M6-1 Single Headed Arrow shall be used in lieu of the M6-4 Double Headed Arrow.
- For a lane closure on a side road or driveway, use the applicable portions of the appropriate Highway Standard or Traffic Control Detail. The spacing of the signs and barricades shall be adjusted for field conditions as directed by the engineer. The directional arrow shall be covered or removed when no longer consistent with the side road lane closure.
- Advance warning signs shall be omitted on driveways unless otherwise noted.
- The traffic control and protection for side roads and intersections shall be included in the contract unit lump sum price for "TRAFFIC CONTROL AND PROTECTION."

ADVANCE WARNING SIGN SPACING TABLE	DISTANCE BETWEEN SIGNS
POSTED SPEED	(D)
40 MPH OR LESS	200'
45 MPH OR GREATER	350'
55 MPH	500'

NOT TO SCALE

MODIFIED DISTRICT ONE
 SIDE ROAD DETAIL

REVISIONS	DATE	APPROVED BY
		ANTHONY KHAWAJA

LakeCounty
 Division of Transportation
 APPROVED BY ANTHONY KHAWAJA
 DATE: APRIL 1, 2007

TYPICAL APPLICATION OF TRAFFIC CONTROL DEVICES, HIGHWAY CONSTRUCTION, CONTRACT MAINTENANCE AND UTILITY OPERATIONS
 TRAFFIC CONTROL AND PROTECTION FOR SIDEROADS, INTERSECTIONS AND DRIVEWAYS

WHERE, AT ANY TIME, ANY VEHICLE, EQUIPMENT, WORKERS OR THEIR ACTIVITIES ENCRUSH ON THE PAVEMENT REQUIRING CLOSURE OF ONE OR MORE TRAFFIC LANES

LC7004

PLANS PREPARED BY:		REVISIONS	
GEWALT HAMILTON ASSOCIATES, INC.		NAME	DATE
Consulting Engineers & Surveyors 850 Forest Edge Drive Version: 03/10/06 (847) 478-9700 (847) 478-9701 Fax		REV.-1 IDOT COMMENTS	02-03-06
		REV.-2	06-02-06
		REV.-3 PRE-FINAL SUB	02-20-09
		PS&E SUBMITTAL	04-10-09

ILLINOIS DEPARTMENT OF TRANSPORTATION

DETAIL SHEET

**PROPOSED ROADWAY RECONSTRUCTION AND TRAFFIC SIGNAL IMPROVEMENTS
 CEMETERY ROAD AND WASHINGTON STREET**

DATE: 10-15-04
 CHECKED BY: BLS

DRAWN BY: CGP