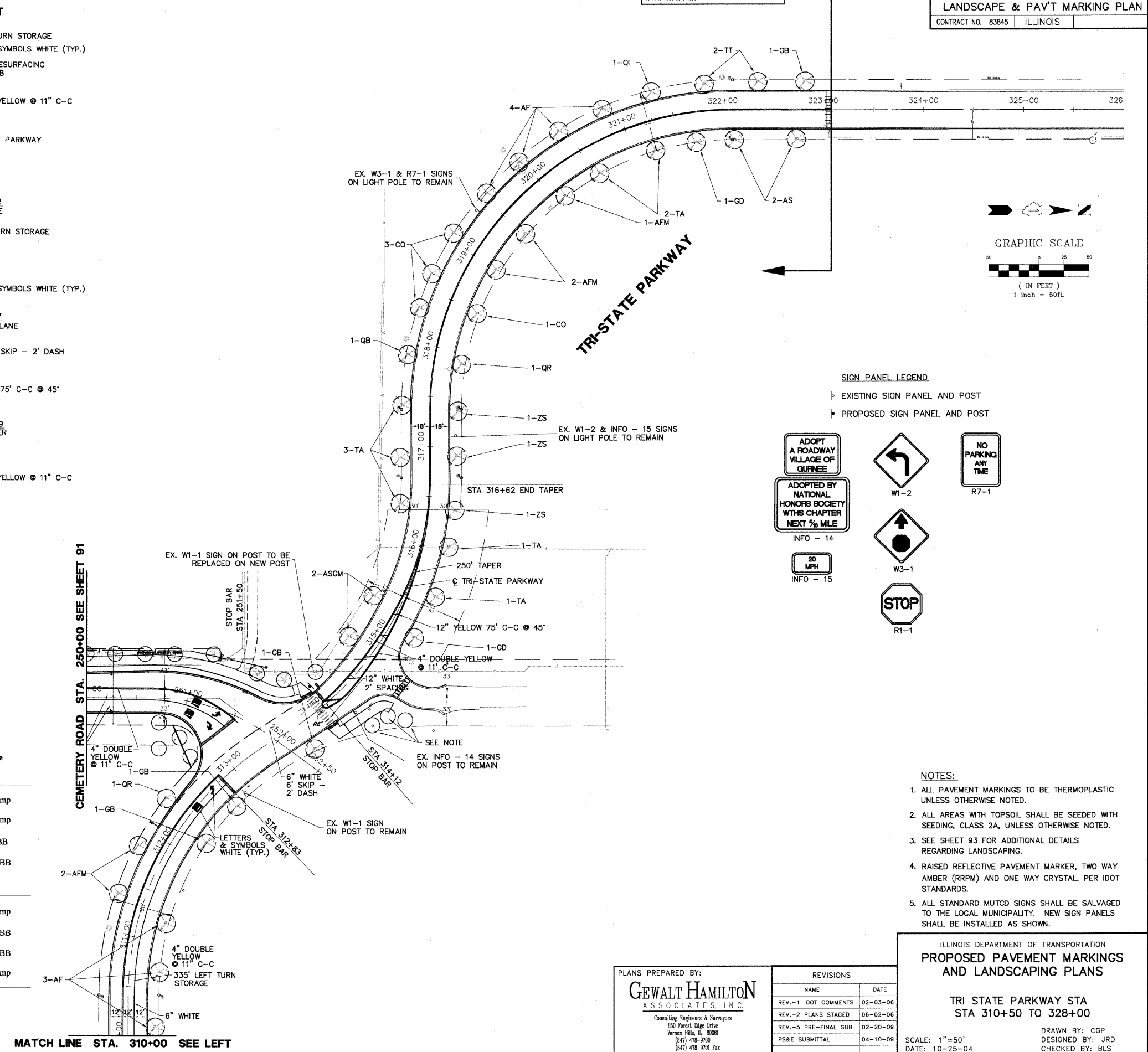
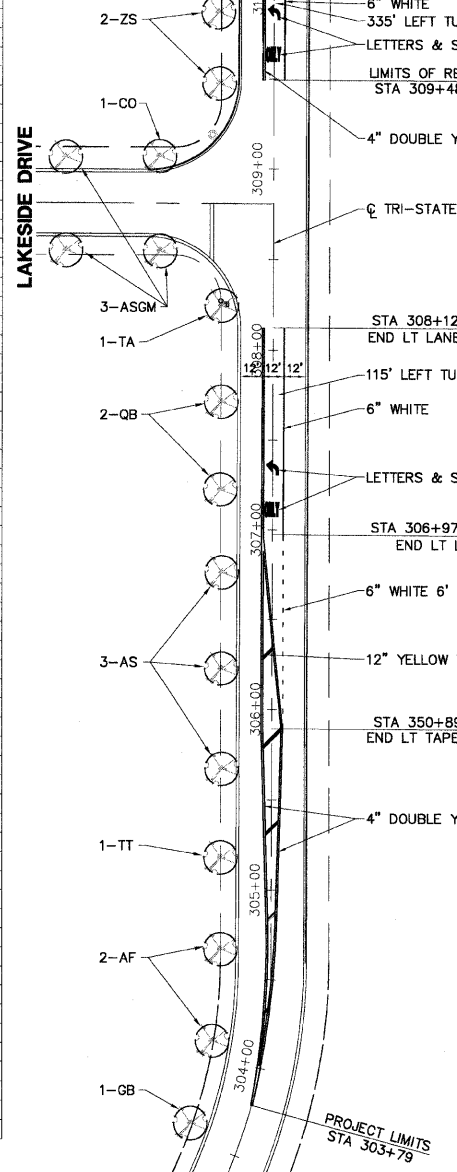


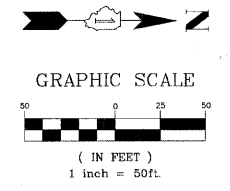
STATION	OFFSET	SYMBOL	DESCRIPTION
303+60	29 LT	GB	GINGKO
304+10	29 LT	AF	AUTUMN BLAZE FREEMAN MAPLE
304+55	29 LT	AF	AUTUMN BLAZE FREEMAN MAPLE
305+19	29 LT	TT	SILVER LINDEN
305+68	29 LT	AS	SUGAR MAPLE
305+25	29 LT	AS	SUGAR MAPLE
306+76	29 LT	AS	SUGAR MAPLE
307+25	29 LT	QB	SWAMP WHITE OAK
307+70	29 LT	QB	SWAMP WHITE OAK
308+25	29 LT	TA	REDMOND LINDEN
308+55	60 LT	ASGM	GREEN MOUNTAIN SUGAR MAPLE
308+55	115 LT	ASGM	GREEN MOUNTAIN SUGAR MAPLE
309+08	60 LT	CO	COMMON HACKBERRY
309+08	115 LT	ASGM	GREEN MOUNTAIN SUGAR MAPLE
309+47	29 LT	ZS	JAPANESE ZELKOVA
309+90	29 LT	ZS	JAPANESE ZELKOVA
310+10	29 RT	AF	AUTUMN BLAZE FREEMAN MAPLE
310+70	30 RT	AF	AUTUMN BLAZE FREEMAN MAPLE
311+20	30 RT	AF	AUTUMN BLAZE FREEMAN MAPLE
311+35	25 LT	AFM	MARMO FREEMAN MAPLE
311+80	25 LT	AFM	MARMO FREEMAN MAPLE
312+20	30 RT	GB	GINGKO
312+35	30 LT	QR	RED OAK
312+70	30 RT	GB	GINGKO
312+72	30 LT	MRJ	RED JEWEL CRABAPPLE
313+80	30 RT	GB	GINGKO
313+90	30 LT	PC	CHANTICLEER CALLERY PEAR
314+30	30 LT	PC	CHANTICLEER CALLERY PEAR
314+30	50 RT	MRJ	RED JEWEL CRABAPPLE
314+50	50 RT	MRJ	RED JEWEL CRABAPPLE
314+55	65 RT	MRJ	RED JEWEL CRABAPPLE
314+75	30 RT	ASGM	GREEN MOUNTAIN SUGAR MAPLE
315+15	30 RT	GD	KENTUCKY COFFEETREE
315+33	30 LT	ASGM	GREEN MOUNTAIN SUGAR MAPLE
315+50	30 RT	TA	REDMOND AMERICAN LINDEN
316+05	25 RT	TA	REDMOND AMERICAN LINDEN
316+34	29 LT	TA	REDMOND AMERICAN LINDEN
316+34	29 RT	ZS	JAPANESE ZELKOVA
316+80	29 RT	ZS	JAPANESE ZELKOVA
316+80	29 LT	TA	REDMOND AMERICAN LINDEN
317+37	29 RT	ZS	JAPANESE ZELKOVA
317+38	29 LT	TA	REDMOND AMERICAN LINDEN
317+85	29 RT	QR	RED OAK
317+85	29 LT	QB	SWAMP WHITE OAK
318+33	29 LT	CO	COMMON HACKBERRY
318+50	29 RT	AFM	MARMO FREEMAN MAPLE
318+66	29 LT	CO	COMMON HACKBERRY
319+00	29 RT	AFM	MARMO FREEMAN MAPLE
319+10	29 LT	AF	AUTUMN BLAZE FREEMAN MAPLE
319+50	29 RT	AFM	MARMO FREEMAN MAPLE
319+55	29 LT	AF	AUTUMN BLAZE FREEMAN MAPLE
319+95	29 LT	AF	AUTUMN BLAZE FREEMAN MAPLE
320+15	29 RT	AFM	MARMO FREEMAN MAPLE
320+40	29 LT	AF	AUTUMN BLAZE FREEMAN MAPLE
320+60	29 RT	TA	REDMOND AMERICAN LINDEN
320+82	29 LT	AF	AUTUMN BLAZE FREEMAN MAPLE
321+25	29 RT	TA	REDMOND AMERICAN LINDEN
321+33	29 LT	QI	SHINGLE OAK
321+70	29 RT	GD	KENTUCKY COFFEETREE
321+80	29 LT	TT	SILVER LINDEN
322+15	29 RT	AS	SUGAR MAPLE
322+36	29 LT	TT	SILVER LINDEN
322+74	29 RT	AS	SUGAR MAPLE
322+84	29 LT	GB	GINGKO

F.A.U. R.T.E.	SECTION	COUNTY	TOTAL SHEETS	SHEET NO.
2903	00-00047-00-FP	LAKE	180	92
LANDSCAPE & PAV'T MARKING PLAN				
CONTRACT NO. 83845		ILLINOIS		

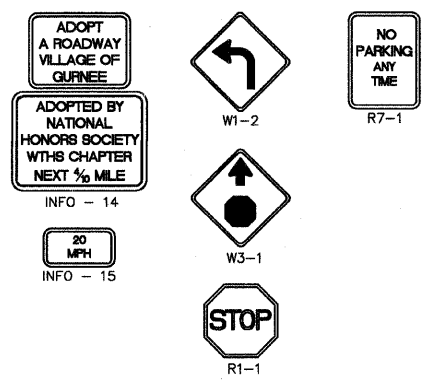
MATCHLINE STA. 310+00 SEE RIGHT



LIMIT OF STAGE 1 IMPROVEMENTS  
STA. 323+08



SIGN PANEL LEGEND  
 ▸ EXISTING SIGN PANEL AND POST  
 ▸ PROPOSED SIGN PANEL AND POST



STREET TREE SCHEDULE OF QUANTITY

Sym.	Botanic Name/Common Name	Qty.	Size	Sym.	Botanic Name/Common Name	Qty.	Size
<b>Large Shade Trees</b>				<b>Medium Shade Trees</b>			
AF	Acer x freemanii "Autumn Blaze" Autumn Blaze Freeman Maple	9	3" BB	AG	Alnus glutinosa European Black Alder	0	8' clump
AFM	Acer x freemanii "Marmo" Marmo Freeman Maple	5	2 1/2" BB	CJ	Cercidiphyllum japonicum Katsuratree	0	8' clump
AS	Acer saccharum Sugar Maple	7	3" BB	PC	Pyrus calleryana "Chanticleer" Chanticleer Callery Pear	0	2 1/2" BB
ASGM	Acer saccharum "Green Mountain" Green Mountain Sugar Maple	5	2 1/2" BB	TC	Tilia cordata "Greenspire" Greenspire Littleleaf Linden	0	2 1/2" BB
CO	Celtis occidentalis Common Hackberry	5	3" BB	<b>Small Trees</b>			
GB	Gingko biloba Gingko	5	3 1/2" BB	CC	Cercis canadensis Eastern Redbud	0	8' clump
GD	Gymnocladus dioica Kentucky Coffeetree	2	3" BB	MP	Malus "Prairiefire" Prairiefire Crabapple	0	2 1/2" BB
QB	Quercus bicolor Swamp White Oak	3	3 1/2" BB	MRJ	Malus "Red Jewel" Red Jewel Crabapple	0	2 1/2" BB
QI	Quercus imbricaria Shingle Oak	1	3 1/2" BB	OV	Ostrya virginiana American Hophornbeam	0	8' clump
QR	Quercus rubra Northern Red Oak	2	3 1/2" BB	<b>Evergreen Trees</b>			
TA	Tilia americana "Redmond" Redmond American Linden	8	2 1/2" BB	PP	Picea pungens Colorado Spruce	0	7' BB
TT	Tilia tomentosa Silver Linden	3	2 1/2" BB				
ZS	Zelkova serrata Japanese Zelkova	5	2 1/2" BB				

- NOTES:
- ALL PAVEMENT MARKINGS TO BE THERMOPLASTIC UNLESS OTHERWISE NOTED.
  - ALL AREAS WITH TOPSOIL SHALL BE SEEDED WITH SEEDING, CLASS 2A, UNLESS OTHERWISE NOTED.
  - SEE SHEET 93 FOR ADDITIONAL DETAILS REGARDING LANDSCAPING.
  - RAISED REFLECTIVE PAVEMENT MARKER, TWO WAY AMBER (RRPM) AND ONE WAY CRYSTAL PER IDOT STANDARDS.
  - ALL STANDARD MUTCD SIGNS SHALL BE SALVAGED TO THE LOCAL MUNICIPALITY. NEW SIGN PANELS SHALL BE INSTALLED AS SHOWN.

ILLINOIS DEPARTMENT OF TRANSPORTATION  
**PROPOSED PAVEMENT MARKINGS  
 AND LANDSCAPING PLANS**

TRI STATE PARKWAY STA  
 STA 310+50 TO 328+00

SCALE: 1"=50'  
 DATE: 10-25-04

DRAWN BY: CGP  
 DESIGNED BY: JRD  
 CHECKED BY: BLS

PLANS PREPARED BY:  
**GEWALT HAMILTON  
 ASSOCIATES, INC.**  
 Consulting Engineers & Surveyors  
 850 Forest Edge Drive  
 Vernon Hills, IL 60069  
 (847) 478-9700  
 (847) 478-9701 Fax

REVISIONS	
NAME	DATE
REV.-1 IDOT COMMENTS	02-03-06
REV.-2 PLANS STAGED	06-02-06
REV.-5 PRE-FINAL SUB	02-20-09
PS&E SUBMITTAL	04-10-09

MATCH LINE STA. 310+00 SEE LEFT