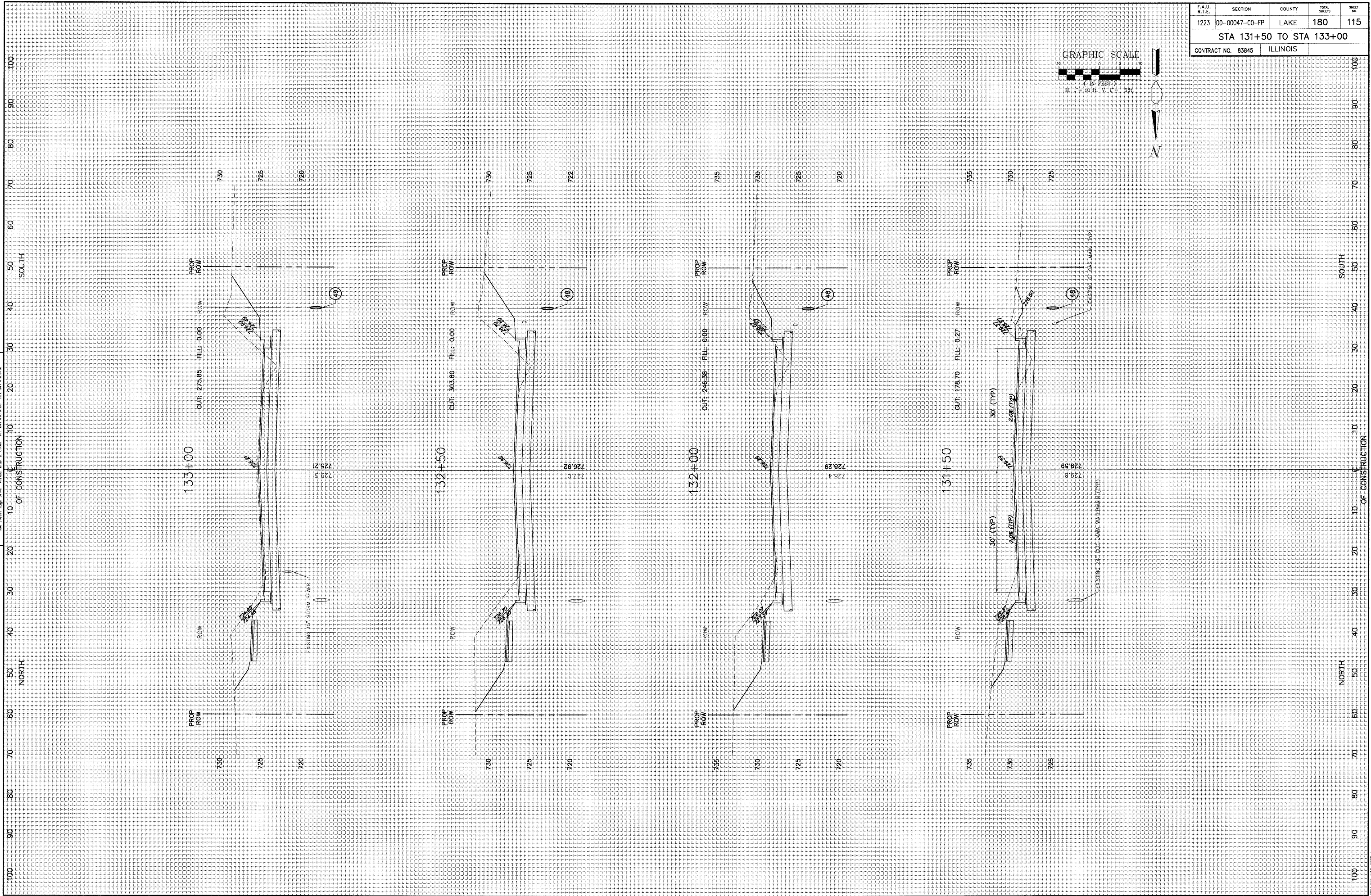


F.A.U. R.T.E.	SECTION	COUNTY	TOTAL SHEETS	SHEET NO.
1223	00-00047-00-FP	LAKE	180	115
STA 131+50 TO STA 133+00				
CONTRACT NO. 83845		ILLINOIS		



GEWALT HAMILTON
ASSOCIATES, INC.

CONSULTING ENGINEERS & SURVEYORS
850 Forest Edge Drive, Vernon Hills, IL 60061 Tel: 847.478.7000 Fax: 847.478.9700



REVISION	DATE	REVISION	DATE
REV-5 PRE-FINAL SUB	02-20-09		
REV-2 PLANS STAGED	06-02-06		
REV-1 DDOT COMMENTS	02-03-08	PS&E SUBMITTAL	04-10-09

WASHINGTON STREET

SCALE: H:1"=10' V:1"=5'
DATE: 12-10-04

DRAWN BY: CGP
DESIGNED BY: TPG
CHECKED BY: BLS