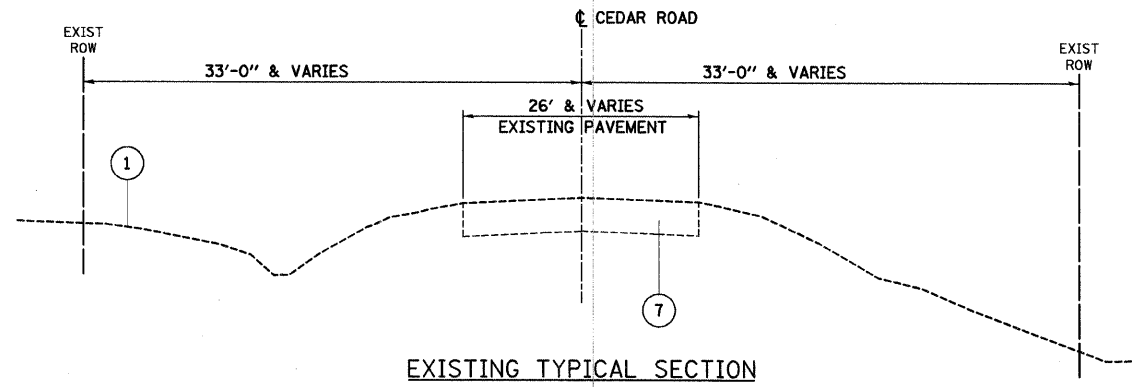
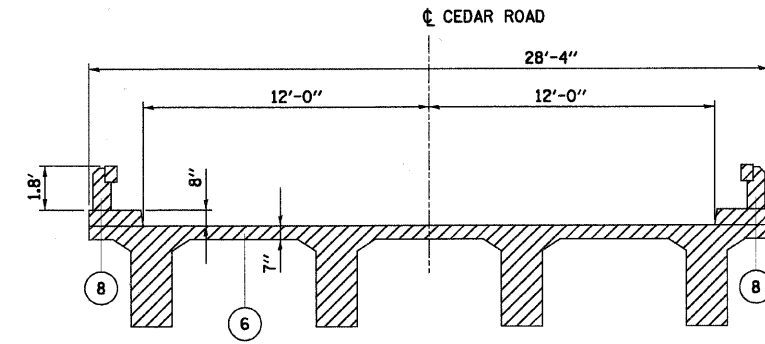


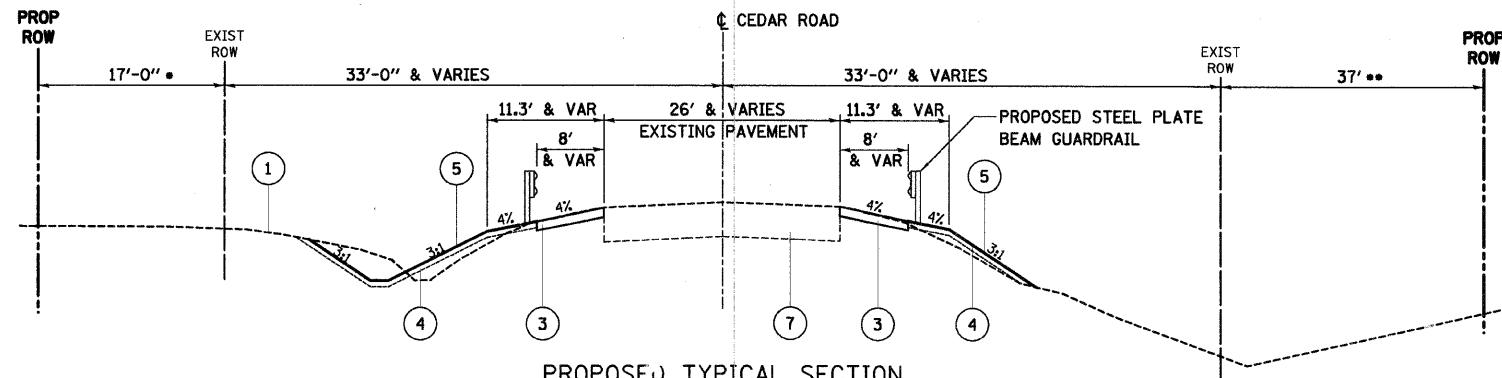
F.A.U. RTE.	SECTION	COUNTY	TOTAL SHEETS	SHEET NO.
369	01-00056-15-BR	WILL	31	4
STA. 101+00.00		TO STA. 110+00.00		
FED. ROAD DIST. NO. 1		ILLINOIS FED. AID PROJECT		



EXISTING TYPICAL SECTION

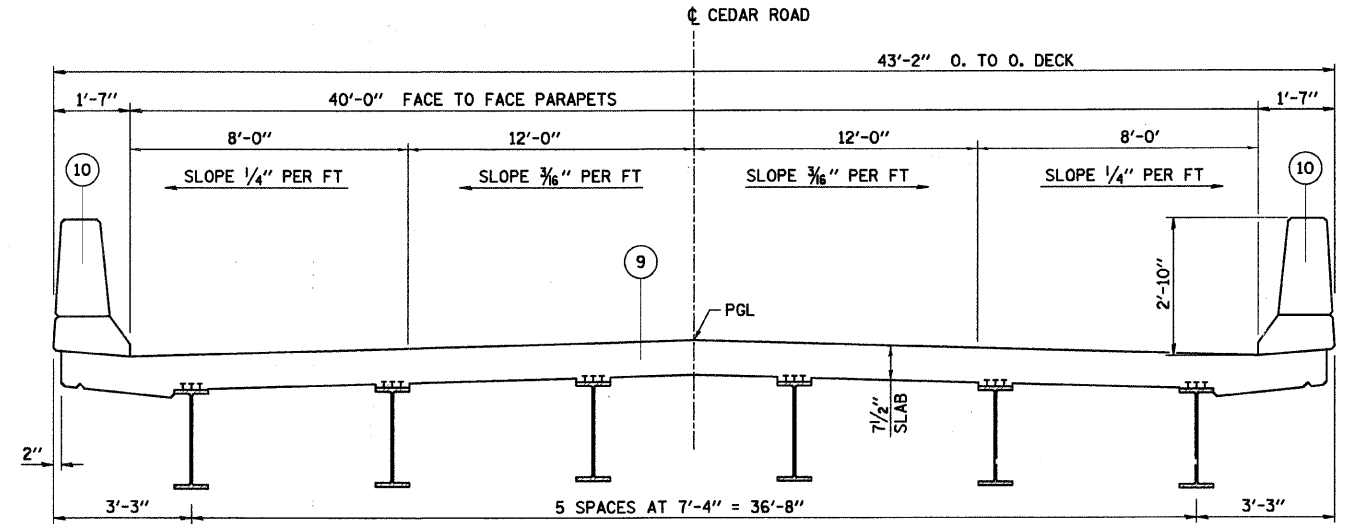


EXISTING BRIDGE TYPICAL SECTION



PROPOSED TYPICAL SECTION

STA 101+00.00 TO STA 106+47.17  
 STA 108+12.55 TO STA 110+00.00  
 \* STA 101+00.00 TO STA 106+45.08  
 \*\* STA 104+84.03 TO STA 110+56.55



PROPOSED BRIDGE TYPICAL SECTION

**LEGEND**

- ① EXISTING GROUND
- ② BRIDGE APPROACH PAVEMENT
- ③ AGG SHOULDER TYPE B, 6" (TYP)
- ④ TOPSOIL FURNISH AND PLACE, 4"
- ⑤ SEEDING, CLASS 2A (TYP) WITH NITROGEN, PHOSPHOROUS, POTASSIUM FERTILIZER NUTRIENT, & EROSION CONTROL BLANKET
- ⑥ EXISTING CONCRETE TEE BEAM SUPERSTRUCTURE
- ⑦ EXISTING BITUMINOUS PAVEMENT
- ⑧ EXISTING CONCRETE BRIDGE RAILING
- ⑨ PROPOSED CONCRETE SUPERSTRUCTURE (SEE BRIDGE PLANS)
- ⑩ PROPOSED CONCRETE PARAPET (CONCRETE - SUPERSTRUCTURE SEE BRIDGE PLANS)

INDICATES ITEMS TO BE REMOVED

HOT-MIX ASPHALT REQUIREMENTS		
MIXTURE TYPE	AC TYPE	AIR VOIDS
CLASS D PATCHES, TYPE III, 14", IL-19mm	PG 64-22 / 58-22 *	4% @ 70 Gyr.
BRIDGE APPROACH PAVEMENT CONNECTOR (FLEXIBLE)	PG 64-22	4% @ 70 Gyr.
HOT-MIX ASPHALT SURFACE COURSE, MIX "D", N70		
BRIDGE APPROACH PAVEMENT CONNECTOR (FLEXIBLE)	PG 64-22 / 58-22 *	4% @ 70 Gyr.
HOT-MIX ASPHALT BINDER COURSE, IL-19.0, N70		

THE UNIT WEIGHT USED TO CALCULATE ALL HOT-MIX ASPHALT SURFACE MIXTURE QUANTITIES IS 112 LBS/SQ YD/IN  
 \* WHEN RAP EXCEEDS 20%, THE NEW ASPHALT BINDER IN THE MIX SHALL BE PG 58-22

REVISIONS		WILL COUNTY DEPARTMENT OF HIGHWAYS
NAME	DATE	
		<b>TYPICAL SECTIONS</b> CEDAR ROAD OVER JACKSON CREEK  SCALE: NONE DATE: 4/10/09 DRAWN BY: SVJ CHECKED BY: GAT

COMPANY NAME: SEC, INC.  
 PROJECT CONTACT: SCOTT CREECH  
 CLIENT: MCLEND  
 4/16/2009 7:59:41 AM  
 V:\Jobs\2009\040596\Sec\Sheets\040596-009.dgn  
 SEC PROJ. NO.: WILL 040596-14