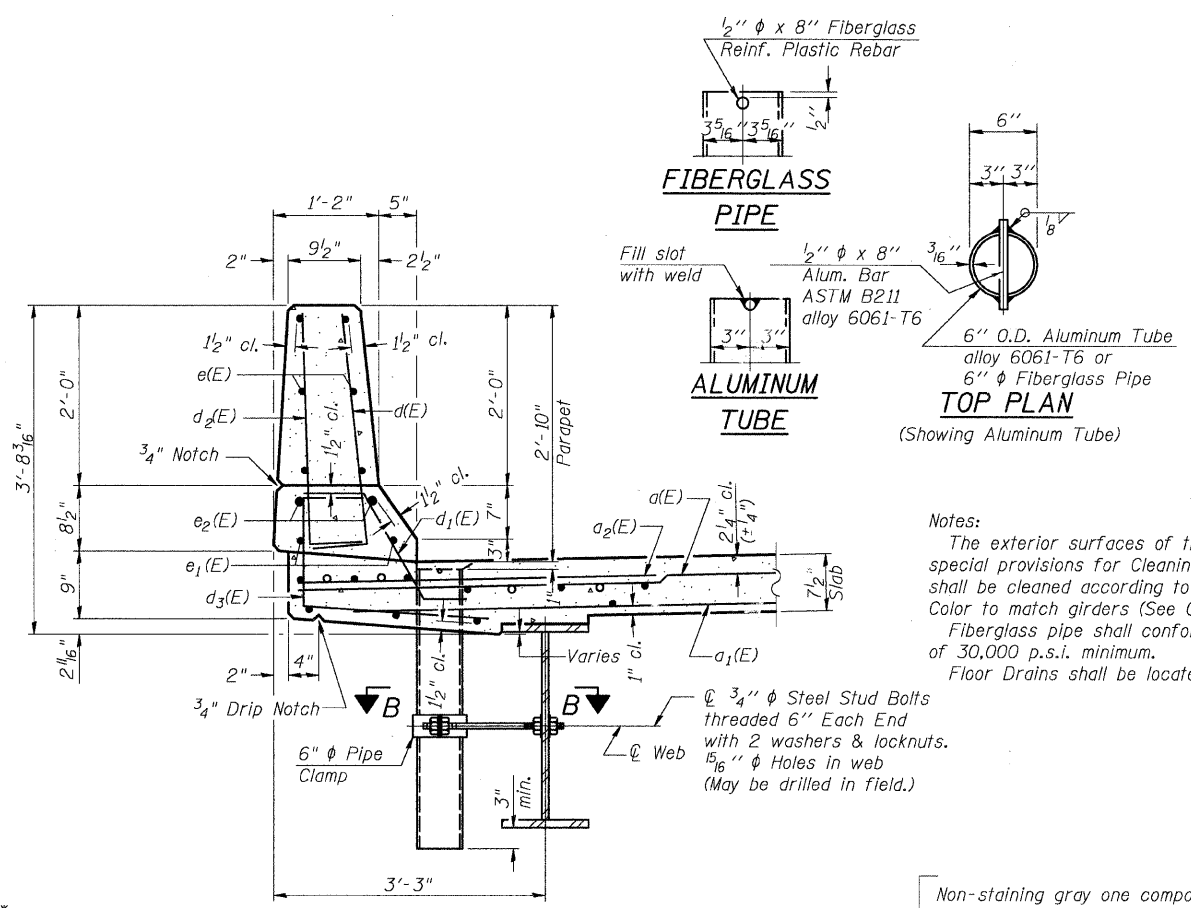
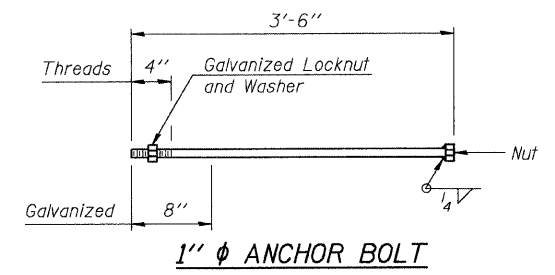
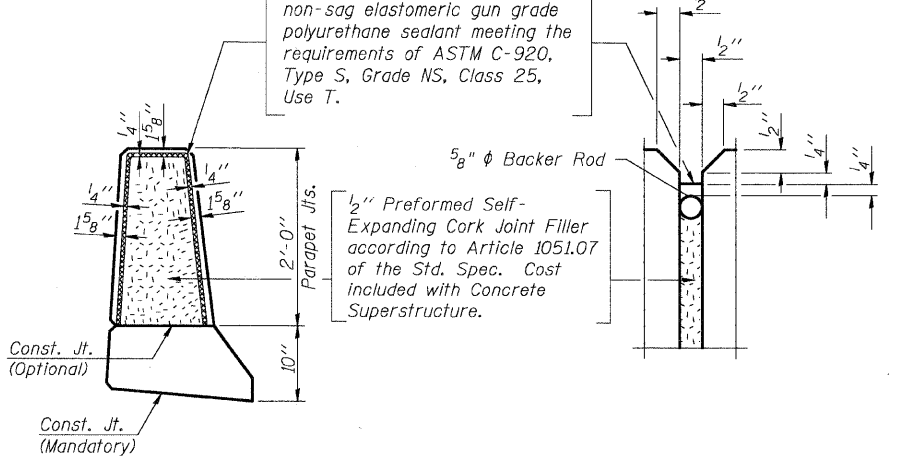
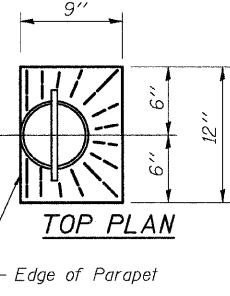
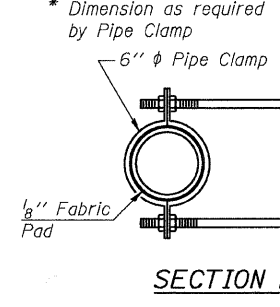


MINIMUM BAR LAP
#5 bar = 1'-8"
#8 bar = 3'-5"

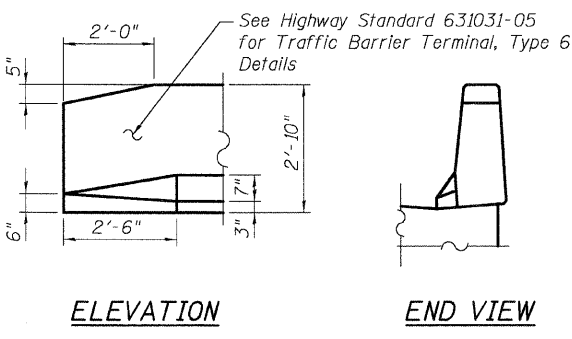
INSIDE ELEVATION OF PARAPET



SECTION THRU PARAPET



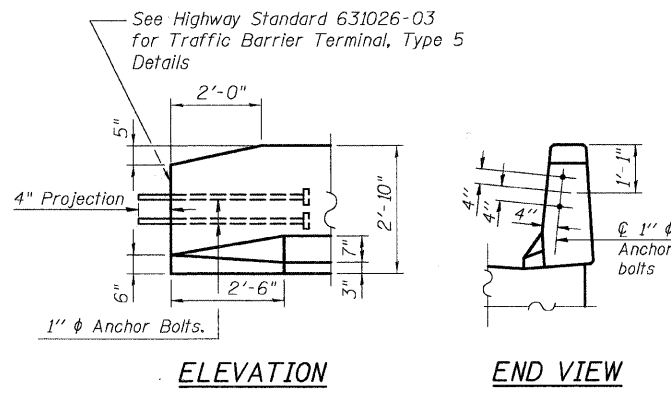
PARAPET JOINT DETAILS



ELEVATION END VIEW

END TREATMENT DETAIL

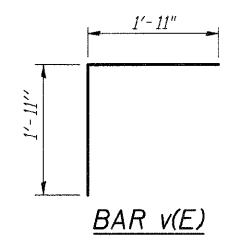
Not to Scale
(Southwest, Southeast, and Northeast corners)



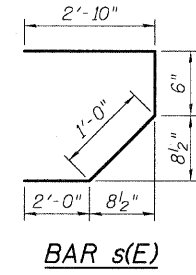
ELEVATION END VIEW

END TREATMENT DETAIL

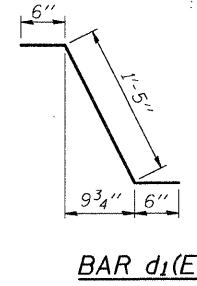
Not to Scale
(Northwest corner)



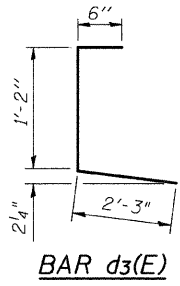
BAR v(E)



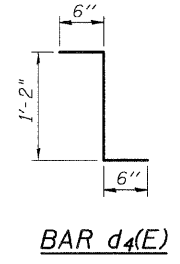
BAR s(E)



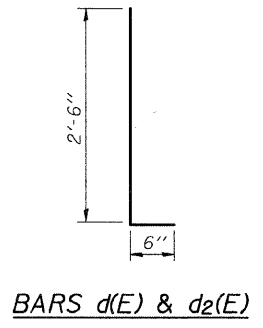
BAR d1(E)



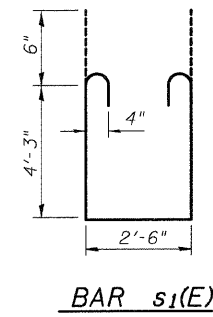
BAR d3(E)



BAR d4(E)



BARS d(E) & d2(E)



BAR s1(E)

SUPERSTRUCTURE BILL OF MATERIAL

Bar	No.	Size	Length	Shape
a(E)	208	# 5	42'-6"	—
a1(E)	146	# 5	40'-10"	—
a2(E)	208	# 6	4'-6"	—
a3(E)	8	# 5	26'-0"	—
b(E)	230	# 5	22'-9"	—
b1(E)	164	# 5	27'-11"	—
c(E)	230	# 5	3'-0"	—
c1(E)	218	# 5	2'-5"	—
c2(E)	230	# 4	3'-0"	—
c3(E)	230	# 4	3'-11"	—
c4(E)	12	# 5	2'-2"	—
d(E)	72	# 4	17'-3"	—
d1(E)	16	# 5	27'-6"	—
d2(E)	12	# 8	37'-3"	—
e(E)	4	# 6	47'-9"	—
e1(E)	6	# 6	49'-6"	—
e2(E)	24	# 6	10'-6"	—
e3(E)	10	# 6	8'-0"	—
e4(E)	4	# 6	3'-5"	—
f(E)	92	# 5	6'-4"	—
f1(E)	82	# 4	12'-0"	—
g(E)	84	# 5	3'-10"	—
Reinforcement Bars, Epoxy Coated		Pound	34,990	
Concrete Superstructure		Cu. Yd.	169.8	

Reinforcement bars designated (E) shall be epoxy coated.
Bars indicated thus 1 x 3-#5 etc. indicates 1 line of bars with 3 lengths per line.

DESIGNED	KMA
CHECKED	AEU
DRAWN	WJH
CHECKED	RGD

WILL COUNTY DEPARTMENT OF HIGHWAYS

SUPERSTRUCTURE DETAILS
CEDAR ROAD OVER JACKSON CREEK
WILL COUNTY
SECTION NO. 01-00056-15-BR
STRUCTURE NO. 099-3381

DATE 4-10-2009