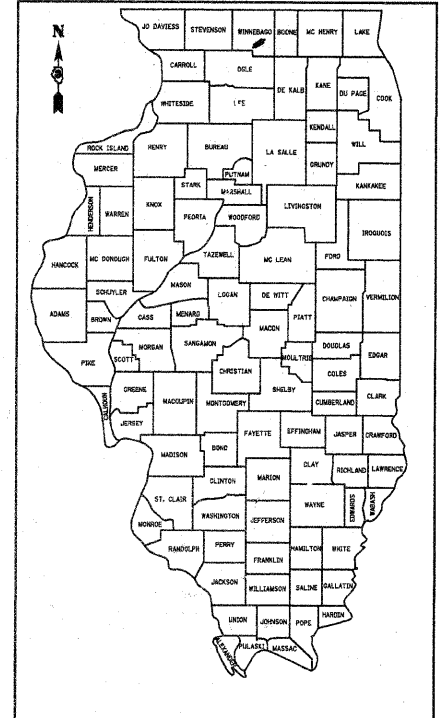
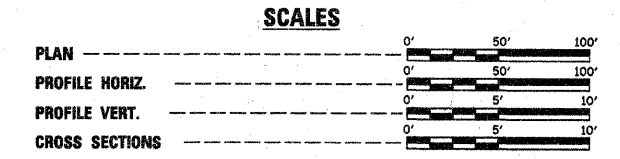


ROUTE NO.	SECTION	COUNTY	TOTAL SHEETS	SHEET NO.
FAS 1045 C.H. 11	07-00421 -00-BR	WINNEBAGO	18	1

ILLINOIS
CONTRACT NO. 85451

STATE OF ILLINOIS DEPARTMENT OF TRANSPORTATION DIVISION OF HIGHWAYS PLANS FOR PROPOSED HIGHWAY BRIDGE PROGRAM

**SECTION 07-00421-00-BR
WINNEBAGO COUNTY
PROJECT NO. BRS-1045(105)
F.A.S. 1045 - C.H. 11
C-92-064-08
CONTRACT #85451**



LOCATION OF SECTION INDICATED THUS:
CLASSIFICATION: MAJOR COLLECTOR (NON-URBAN)
DESIGN VOLUME: 750-2000 ADT
CURRENT ADT: 734 (2008)
DESIGN SPEED: 50 M.P.H.

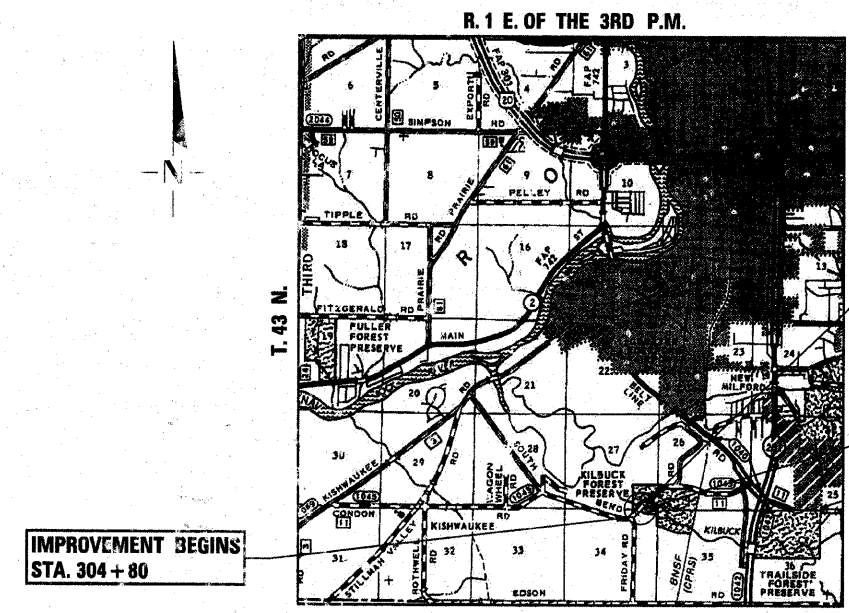
TOLL FREE JOINT UTILITY LOCATING
 INFORMATION FOR EXCAVATORS (J.U.L.I.E.)
 TELEPHONE NUMBER 1-800-892-0123

INDEX OF SHEETS

SHEET NO.	TITLE
1.	COVER SHEET
2.	SUMMARY OF QUANTITIES, GENERAL NOTES & TYPICAL SECTIONS
3.	PLAN AND PROFILE SHEET
4.	SHOULDER AND GUARDRAIL DETAIL SHEET
5.-11.	BRIDGE PLANS
12.-17.	STATION CROSS SECTIONS
18.	EROSION CONTROL PLAN

STANDARDS:

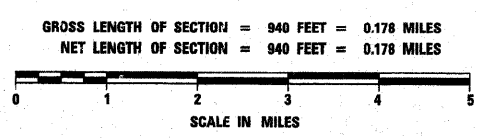
280001-04	TEMPORARY EROSION CONTROL SYSTEMS
515001-03	NAME PLATE FOR BRIDGES
630301-05	SHOULDER WIDENING FOR TYPE 1 (SPECIAL) GUARDRAIL TERMINALS
631032-04	TRAFFIC BARRIER TERMINAL, TYPE 6A
635006-03	REFLECTOR AND TERMINAL MARKER PLACEMENT
701006-03	OFF-ROAD OPERATIONS, 2L, 2W, 4.5 M (15') TO 600 MM (24') FROM PAVEMENT EDGE
701301-03	LANE CLOSURE, 2L, 2W, SHORT TIME OPERATIONS
701311-03	LANE CLOSURE, 2L, 2W, MOVING OPERATIONS - DAY ONLY
701901-01	TRAFFIC CONTROL DEVICES
720011-01	METAL POSTS FOR SIGNS, MARKERS, AND DELINEATORS
728001-01	TELESCOPING STEEL SIGN SUPPORT
729001-01	APPLICATIONS OF TYPES A & B METAL POST (FOR SIGNS AND MARKERS)
780001-02	TYPICAL PAVEMENT MARKINGS
BLR 21-8	TYPICAL APPLICATION OF TRAFFIC CONTROL DEVICES FOR CONSTRUCTION ON RURAL LOCAL HIGHWAYS



**IMPROVEMENT ENDS
STA. 314 + 20**

**STA. 310 + 19.92 - SPECIAL BRIDGE DESIGN
FOUR SPAN P.P.C. DECK BEAM BRIDGE (21" DEPTH);
FOUR SPANS @ 46'-0"; 186'-1 1/4" BK.-BK. ABUTS.;
30'-0" ROADWAY, 30° SKEW RT.
PROPOSED S.N. 101-3069
EXISTING S.N. 101-3070**

LOCATION PLAN



Cary J. Cartwright 2-4-09
 ILLINOIS PROFESSIONAL NO. 43408
 EXPIRES 11-30-09

4440 ASH GROVE
 SPRINGFIELD, IL 62711
 (217) 798-8500
 www.fehr-graham.com

FEHR-GRAHAM & ASSOCIATES, LLC
 ENGINEERING AND SCIENCE CONSULTANTS
PROFESSIONAL ENGINEERS & ARCHITECTS