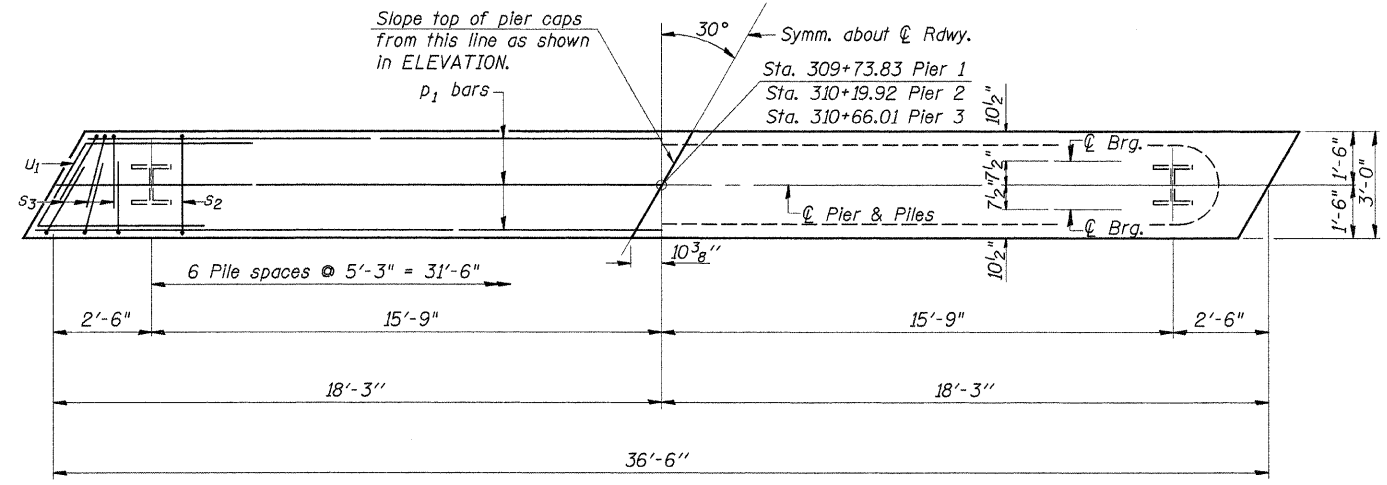
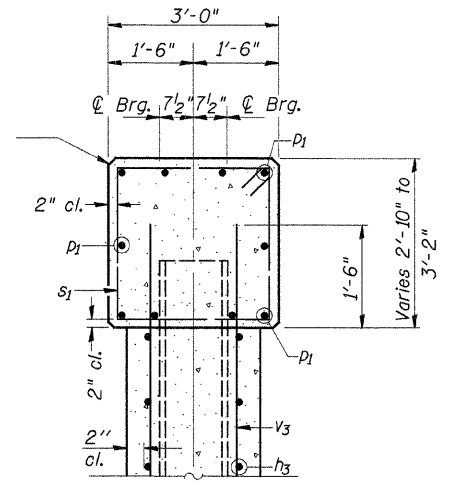
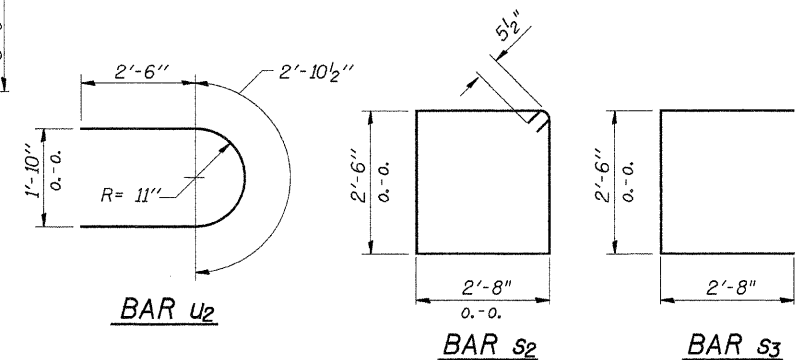


ROUTE NO.	SECTION	COUNTY	TOTAL SHEETS	SHEET NO.
FAS 1045 CH II	07-00421 -00-BR	WINNEBAGO	18	10
ILLINOIS		CONTRACT NO. 85451		

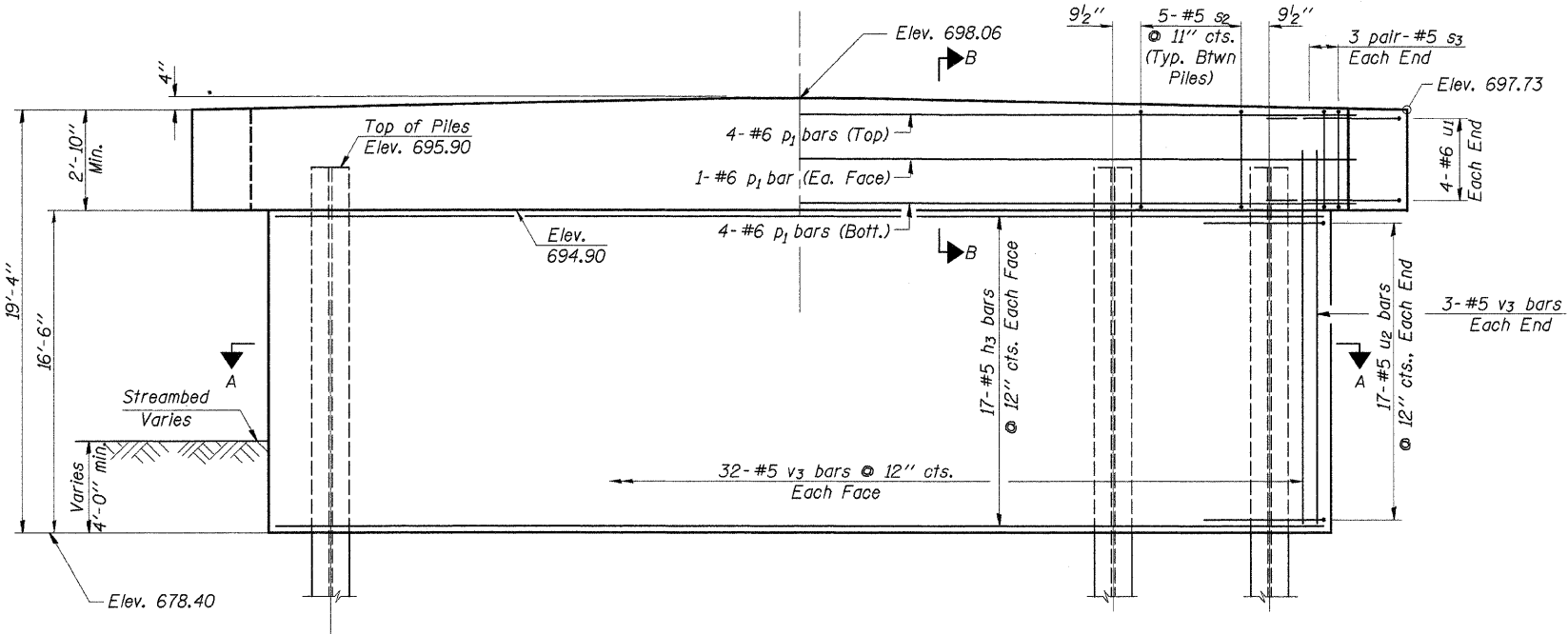


PLAN

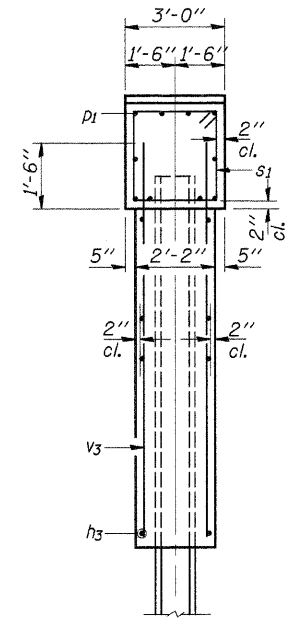
Note: All edges shall have standard 3/4" chamfer



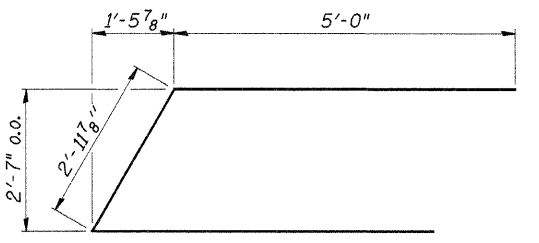
SECTION B-B



ELEVATION



END VIEW



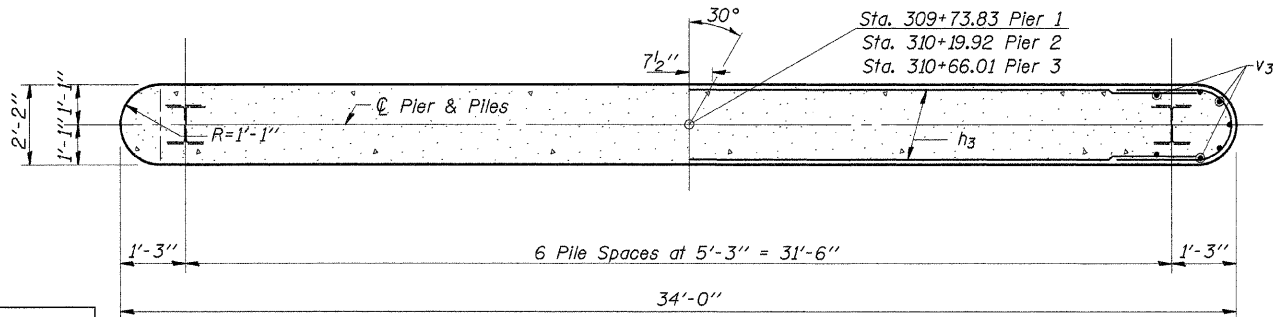
BAR u1

BILL OF MATERIAL - 3 PIERS

BAR	NO.	SIZE	LENGTH	SHAPE
h3	102	#5	32'-6"	—
p1	30	#6	36'-2"	—
s2	90	#5	11'-3"	□
s3	36	#5	7'-10"	□
u1	24	#6	13'-0"	U
u2	102	#5	7'-11"	U
v3	210	#5	17'-10"	—

Concrete Structures	Cu. Yd.	169.7
Reinforcement Bars	Pound	11,660
Furnishing Steel Piles HP12x53	Foot	1,700
Test Pile Steel HP12x53	Each	1
Underwater Structure Excavation Protection	Each	3
Driving Piles	Foot	1,700

Structure Excavation at Piers included with Cost of Concrete Structures.



SECTION A-A

PILE DATA

Type & Size.....Steel Piles HP12x53
 No. Req'd.....*21
 Nominal Required Bearing.....330 kips
 Allowable Resistance Available.....110 kips
 Estimated Length.....85 Ft./Pile

*Includes 1 Test Pile to be driven in a permanent location at the pier 2.

The test piles shall be driven to 110 percent of the Nominal Required Bearing indicated above.

The Steel H-Piles shall be according to AASHTO M270 Grade 50. The Length of pile driven must be sufficient to place the pile tip at or below Elev. 625.0.

DESIGNED	A.R.K.
CHECKED	J.A.M.
DRAWN	S.A.P.
CHECKED	J.A.M. & A.R.K.

PIERS

SECTION 07-00421-00-BR
 F.A.S. ROUTE 1045 - C.H. 11
 WINNEBAGO COUNTY
 STA. 310+19.92

4440 ASH GROVE SPRINGFIELD, IL 62711 (217) 753-8600 www.fehr-graham.com	FEHR-GRAHAM & ASSOCIATES, LLC ENGINEERING AND SCIENCE CONSULTANTS FERRIS, IL. ROCKFORD, IL. ROCKFORD, IL. MONROE, IL. SPRINGFIELD, IL.	JOB NO.: 46466 FILE: PIERS.DGN DATE: 02/03/09
--	---	---