

E. 1/2, E. 1/2, SEC. 28, T. 29 N., R. 3 E., 4TH P.M.

WILLIAM S. MCFADDEN

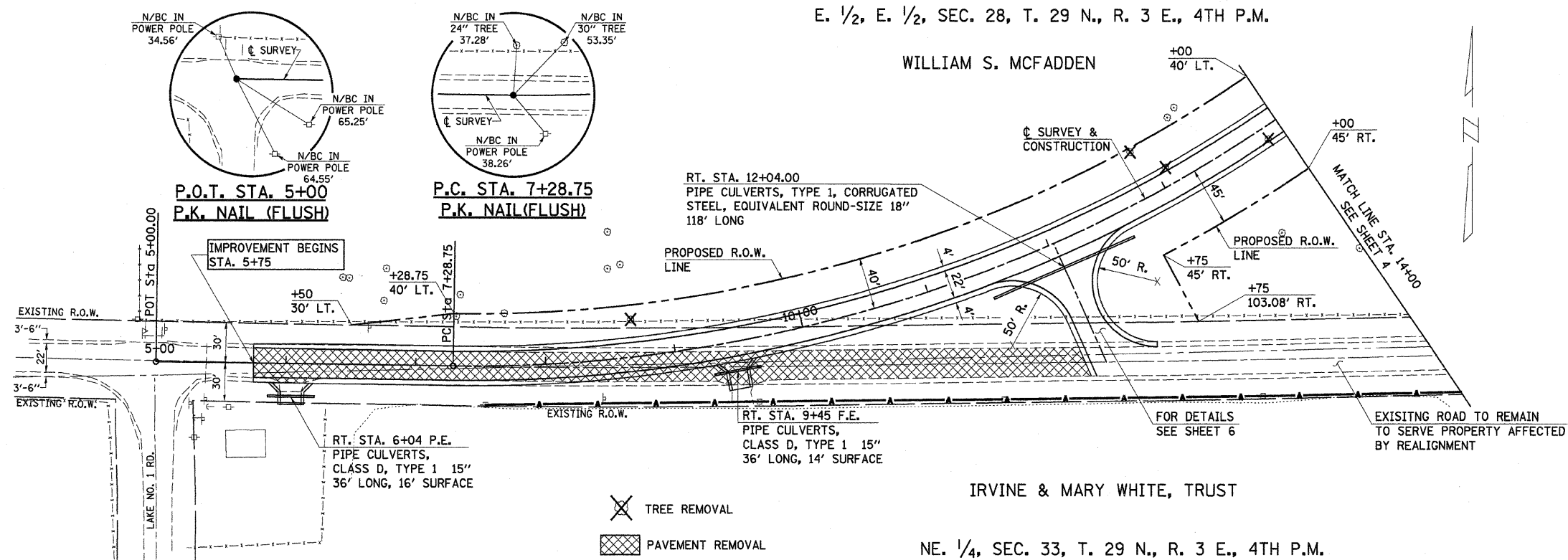
F.A. RTE.	SECTION	COUNTY	TOTAL SHEETS	SHEET NO.
C.H. 393-0012-00-BR	JODAVIESS	42	3	
STA. 5+00 TO STA. 14+00		ILLINOIS FED. AID PROJECT		
CONTRACT NO. 85462				

PI STA. = 18+61.48
 $\Delta = 91^\circ 40' 46''$ (LT)
 $D = 5^\circ 12' 31''$
 $R = 1,100.00'$
 $L = 1,760.12'$
 $E = 478.95'$
 P.C. STA. = 7+28.75
 P.T. STA. = 24+88.87
 $S.E. = 0.06$ FT./FT.
 TRANSITION
 STA. 5+96.75 TO STA. 7+72.75
 STA. 24+44.87 TO STA. 26+20.87

PLAN	SURVEYED	DATE
NOTE BOOK	BY	
NO.		

PROFILE	SURVEYED	DATE
NOTE BOOK	BY	
NO.		

PLOT DATE = 1/12/87
 FILE NAME = 4685APL03N
 PLOT SCALE = VARIES
 USER NAME = J. DAY, S. PRICE



ENTRANCES TO BE BUILT

RT. STA. 6+04, P.E. -5.8%, 20' ROADBED
 RT. STA. 9+45, F.E. +5.85%, 18' ROADBED
 RT. STA. 12+04 SEE SHEET 6 FOR DETAILS

QUANTITIES INCLUDED IN THOSE LISTED

PIPES TO BE REMOVED

RT. STA. 6+04, 22' LONG
 QUANTITIES INCLUDED IN "EARTH EXCAVATION".

FOR FENCING SCHEDULES SEE SHEET 7.

IRVINE & MARY WHITE, TRUST
 NE. 1/4, SEC. 33, T. 29 N., R. 3 E., 4TH P.M.

