

F.A. RTE.	SECTION	COUNTY	TOTAL SHEETS	SHEET NO.
C.H. 393-00112-00-BR	JODAVIESS	JODAVIESS	42	4
STA. 14+00 TO STA. 22+00				
ILLINOIS FED. AID PROJECT				
CONTRACT NO. 85462				

E. 1/2, E. 1/2, SEC. 28, T. 29 N., R. 3 E., 4TH P.M.

WILLIAM S. MCFADDEN

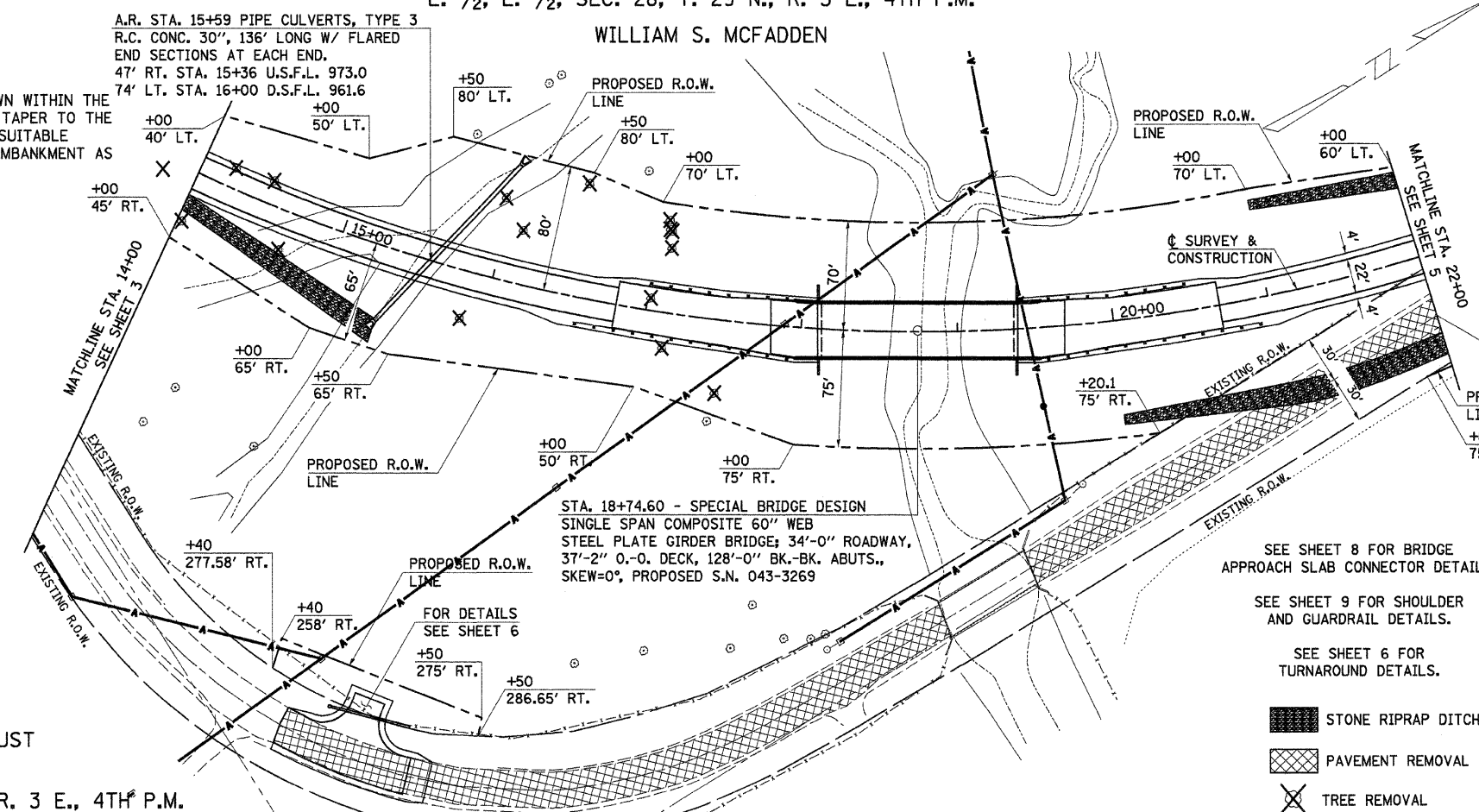
PI STA. = 18+61.48  
 $\Delta = 91^{\circ} 40' 46''$  (LT)  
 $D = 5^{\circ} 12' 31''$   
 $T = 1,132.73'$   
 $L = 1,760.12'$   
 $E = 478.95'$   
P.C. STA. = 7+28.75  
P.T. STA. = 24+88.87  
S.E. = 0.06 FT./FT.  
TRANSITION  
STA. 5+96.75 TO STA. 7+72.75  
STA. 24+44.87 TO STA. 26+20.87

**CHANNEL EXCAVATION**

THE CHANNEL SHALL BE EXCAVATED AS SHOWN WITHIN THE LIMITS OF THE PROPOSED STRUCTURE THEN TAPER TO THE EXISTING CHANNEL AT THE R.O.W. LINES. SUITABLE EXCAVATED MATERIAL TO BE USED IN THE EMBANKMENT AS DIRECTED BY THE ENGINEER.

CHANNEL EXCAVATION = 365 CU. YD.

PLAN	SURVEYED	DATE
	BY	
	PLOTTED	
	CHECKED	
	RT. OF WAY CHECKED	
	CADD FILE NAME	
	NO.	



FOR FENCING SCHEDULES SEE SHEET 7.

IRVIN & MARY WHITE TRUST

SEE SHEET 8 FOR BRIDGE APPROACH SLAB CONNECTOR DETAILS.  
SEE SHEET 9 FOR SHOULDER AND GUARDRAIL DETAILS.  
SEE SHEET 6 FOR TURNAROUND DETAILS.

- STONE RIPRAP DITCH
- PAVEMENT REMOVAL
- TREE REMOVAL

**EXISTING S.N. 043-3001**

±167' RIGHT STA. 19+10  
2 SPAN R. C. SLAB BRIDGE  
24'-6" O.-O. DECK, 64'-0" BK.-BK. ABUTS., SKEW=9°30'  
REMOVAL OF EXISTING STRUCTURES = 1 EACH

**UTILITIES**

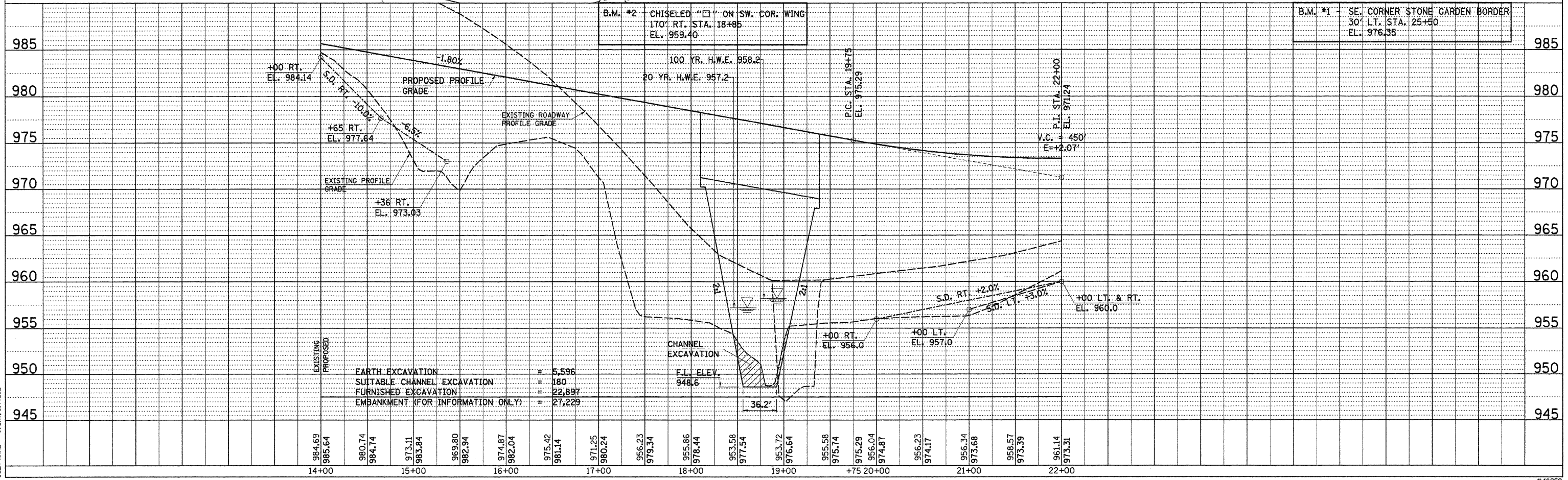
COM ED  
TOM STUTZMAN 630-437-2236  
VERIZON NORTH, INC.  
MARY RUTH WILLIS 309-827-1617  
MCLEOD USA  
MARK MILLS 217-876-7194 EX. 240  
MEDIACOM  
DARIN W. DEAN 563-584-0589 EX. 114

WILLIAM S. MCFADDEN

E. 1/2, NE. 1/4, SEC. 33, T. 29 N., R. 3 E., 4TH P.M.

SW. 1/4, SEC. 27, T. 29 N., R. 3 E., 4TH P.M.

PROFILE	SURVEYED	DATE
	BY	
	PLOTTED	
	CHECKED	
	B.M. NOTED	
	STRUCTURE NOTATIONS OK'D	
	NO.	



PLOT DATE = 1/12/07  
FILE NAME = 46859RWP2LON  
PLOT SCALE = VARIES  
USER NAME = J. DAY, S. PRICE