

ROUTE NO.	SECTION	COUNTY	TOTAL SHEETS	SHEET NO.
C.H. 3	93-00112-00-BR	JoDAVIESS	42	7

CONTRACT NO. 85462

### FENCE (SPECIAL)

**FENCE (SPECIAL):** THIS WORK SHALL CONSIST OF CONSTRUCTING BARBED WIRE FENCING SUPPORTED ON WOOD AND METAL POSTS INCLUDING ACCESSORIES ACCORDING TO THE APPLICABLE PORTIONS OF SECTION 665 OF THE STANDARD SPECIFICATIONS AND STANDARD 665001. THE BARBED WIRE FENCE SHALL CONSIST OF SIX STRANDS OF BARBED WIRE PROPERLY SPACED. THE POST SHALL BE PROPORTIONED IN A RATIO OF ONE WOODEN POST FOR EVERY THREE METAL "T" POST.

**METHOD OF MEASUREMENT:** FENCE (SPECIAL) WILL BE MEASURED FOR PAYMENT IN FEET ALONG THE TOP OF THE FENCE FROM CENTER TO CENTER OF END POST.

**BASIS OF PAYMENT:** THIS WORK WILL BE PAID FOR AT THE CONTRACT UNIT PRICE PER FOOT FOR "FENCE (SPECIAL)", WHICH PRICE SHALL INCLUDE ALL EXCAVATION AND BACK FILLING, EXCEPT EXCAVATION IN ROCK WHICH WILL BE PAID FOR ACCORDING TO SECTION 109.

LOCATION	QUANTITY
30' LT. STA. 6+50 TO 70' LT. STA. 18+00	= 1112 FOOT
70' LT. STA. 18+00 TO 28' LT. STA. 18+09	= 43 FOOT
28' LT. STA. 19+40 TO 70' LT. STA. 20+00	= 71 FOOT
70' LT. STA. 20+00 TO 44' LT. STA. 24+95	= 470 FOOT
103.08' RT. STA. 12+75 TO 45' RT. STA. 12+75	= 58 FOOT
45' RT. STA. 12+75 TO 75' RT. STA. 18+00	= 557 FOOT
75' RT. STA. 18+00 TO 30' RT. STA. 18+12	= 47 FOOT
103.08' RT. STA. 12+75 TO 277.58' RT. STA. 15+40	= 358 FOOT
277.58' RT. STA. 15+40 TO 258' RT. STA. 15+40	= 20 FOOT
258' RT. STA. 15+40 TO 275' RT. STA. 16+50	= 138 FOOT
275' RT. STA. 16+50 TO 312' RT. STA. 16+50	= 37 FOOT
328' RT. STA. 16+50 TO 456' RT. STA. 16+31.5	= 130 FOOT
30' RT. STA. 19+37 TO 117' RT. STA. 19+40	= 87 FOOT
117' RT. STA. 19+40 TO 181' RT. STA. 19+60	= 68 FOOT
<b>TOTAL</b>	<b>= 3196 FOOT</b>

### FENCE REMOVAL

**FENCE REMOVAL:** THIS WORK WILL CONSIST OF THE REMOVAL AND DISPOSAL OF EXISTING FENCE REGARDLESS OF TYPE INCLUDING POSTS AT THE LOCATIONS SHOWN IN THE PLANS AND AS DIRECTED BY THE ENGINEER.

**METHOD OF MEASUREMENT:** FENCE REMOVAL WILL BE MEASURED FOR PAYMENT IN FEET FROM CENTER TO CENTER OF END POSTS.

**BASIS OF PAYMENT:** THIS WORK WILL BE PAID FOR AT THE CONTRACT UNIT PRICE PER FOOT FOR "FENCE REMOVAL".

LOCATION	QUANTITY
30' LT. STA. 6+50 TO 168' RT. STA. 18+79	= 1449 FOOT
456' RT. STA. 16+31.50 TO 207' RT. STA. 18+91	= 421 FOOT
170' RT. STA. 19+47 TO 181' RT. STA. 19+60	= 19 FOOT
124' RT. STA. 19+40 TO 30' LT. STA. 24+95	= 593 FOOT
30' LT. STA. 24+95 TO 44' LT. STA. 24+95	= 14 FOOT
<b>TOTAL</b>	<b>= 2496 FOOT</b>

### FURNISHING AND INSTALLING STEEL GATE ASSEMBLY

**FURNISHING AND INSTALLING STEEL GATE ASSEMBLY:** THIS ITEM SHALL CONSIST OF ALL MATERIAL, LABOR AND EQUIPMENT NECESSARY TO INSTALL A STEEL GATE ASSEMBLY THAT WILL CONSIST OF ONE 16' LONG GATE AT THE LOCATION SHOWN IN THE PLANS AND AS FOLLOWS:

THE STEEL GATE ASSEMBLY SHALL MEET ASTM A53 OR ASTM A106 GRADE B SPECIFICATIONS.

THE GATE SHALL HAVE 6 RAILS, SHALL BE POWDER COATED GREEN OR OTHER APPROVED COLOR AND SHALL BE 50" TALL. IT SHALL BE CONSTRUCTED WITH 2", 16 GAUGE STEEL PIPE.

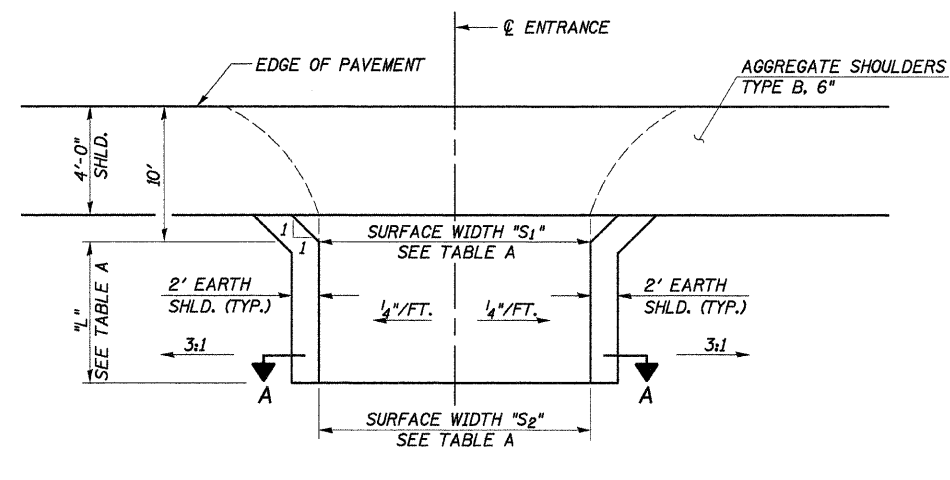
ALL HORIZONTAL TUBES OF THE GATE SHALL BE WELDED COMPLETELY AROUND THE JOINTS TO THE GATE FRAME AND SHALL HAVE A MINIMUM OF TWO "Z" BRACES.

THE COST OF ALL THE WORK INCLUDED SHALL BE PAID FOR AT THE CONTRACT UNIT PRICE EACH FOR "FURNISHING AND INSTALLING STEEL GATE ASSEMBLY" WHICH PRICE SHALL INCLUDE ALL HINGING AND LATCHING HARDWARE FOR THE GATE ASSEMBLY.

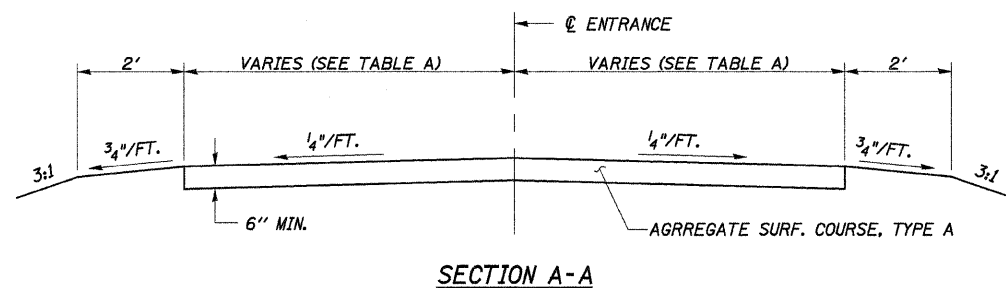
LOCATION	QUANTITY
312' RT. STA. 16+50 TO 328' RT. STA. 16+50	= 1 EACH
<b>TOTAL</b>	<b>= 1 EACH</b>

### ENTRANCE DETAILS AND FENCING DETAILS

SECTION 93-00112-00-BR  
JoDAVIESS COUNTY  
COUNTY HIGHWAY 3  
STATION 18+74.60



**TYPICAL FIELD & PRIVATE ENTRANCE DETAIL**  
(AGGREGATE SURFACE)



**SECTION A-A**

**TABLE A - ENTRANCE QUANTITIES**

LOCATION	TYPE	PROPOSED SURFACE	SURFACE WIDTH-"S1" (FT.)	SURFACE WIDTH-"S2" (FT.)	ENTRANCE LENGTH-"L" (FT.)	AGG. SURF. CSE., TYPE A (TON)
RT. STA. 6+04	AGGREGATE	AGGREGATE	16	16	10	11
RT. STA. 9+45	AGGREGATE	AGGREGATE	14	14	15	13
LT. STA. 25+21	AGGREGATE	AGGREGATE	14	14	13	11
<b>TOTAL</b>						<b>35</b>

### GENERAL NOTES:

THE PLAN DETAILS AND SCHEDULES SHOULD BE USED AS A GUIDE FOR THE ENGINEER TO IMPLEMENT THE FINAL DESIGN. THE ENGINEER MAY DECIDE TO SALVAGE PORTIONS OF THE EXISTING ENTRANCE PAVEMENT STRUCTURE; THEREFORE, REDUCING PAY ITEM QUANTITIES. NO ADDITIONAL PAYMENT WILL BE ALLOWED FOR THIS REDUCTION IN QUANTITIES.

4440 ASH GROVE  
SPRINGFIELD, IL. 62711  
(217) 793-8600  
www.fehr-graham.com

**FEHR-GRAHAM & ASSOCIATES, LLC**  
ENGINEERING AND SCIENCE CONSULTANTS  
P.O. BOX 10000, SPRINGFIELD, IL 62709

DRAWN: S.A.P.  
DATE: 03/26/07

CHECKED: G.J.C.  
DATE: 05/05/08

JOB NO.: 46859  
FILE: ENT-FENCE.DGN  
DATE: 06/01/09