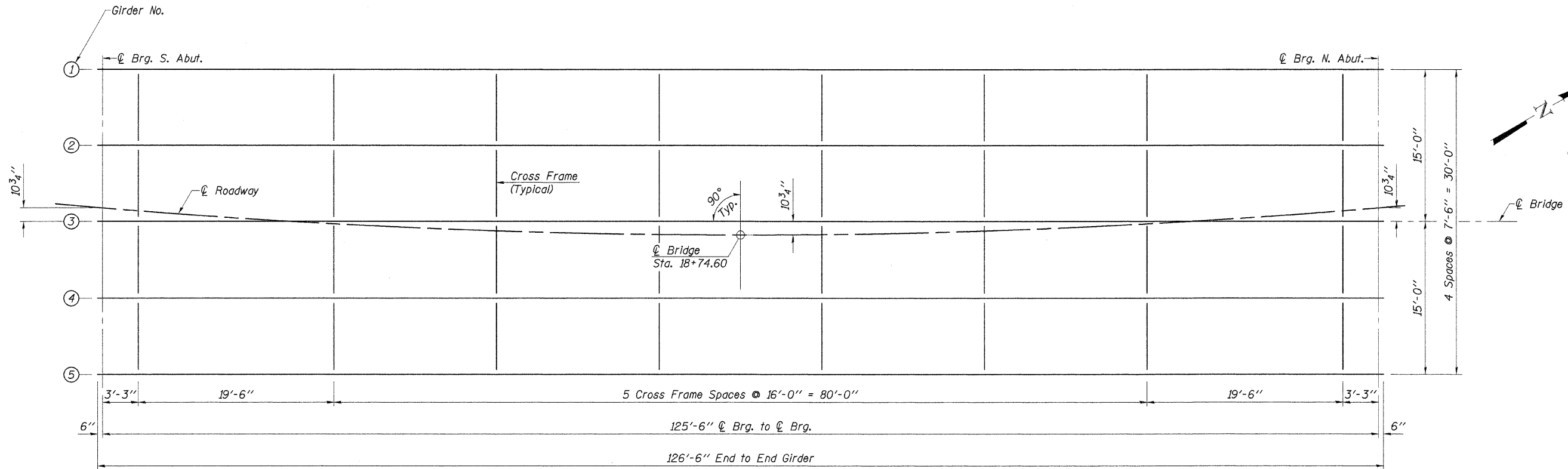
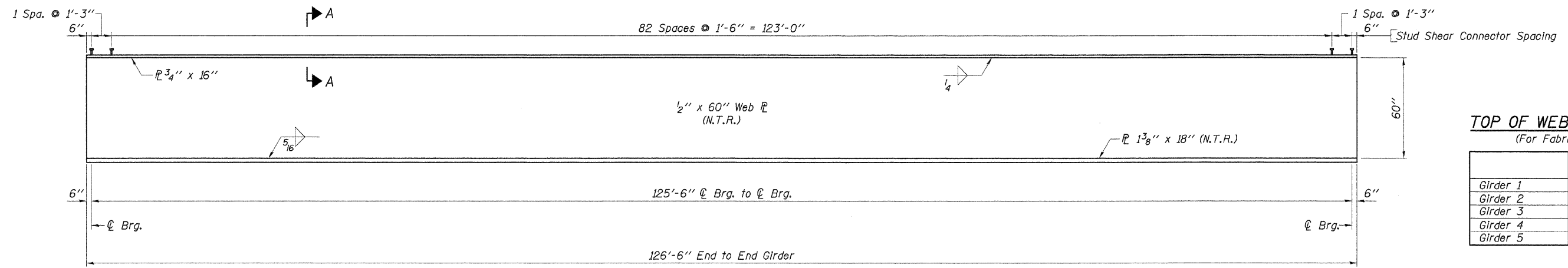


ROUTE NO.	SECTION	COUNTY	TOTAL SHEETS	SHEET NO.
C.H. 3	93-00112-00-BR	JO DAVIESS	42	22
ILLINOIS		CONTRACT NO. 85462		

Sheet 13 of 19

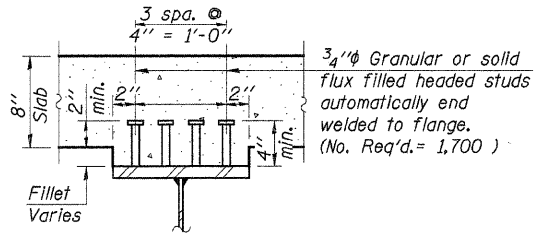


**FRAMING PLAN**



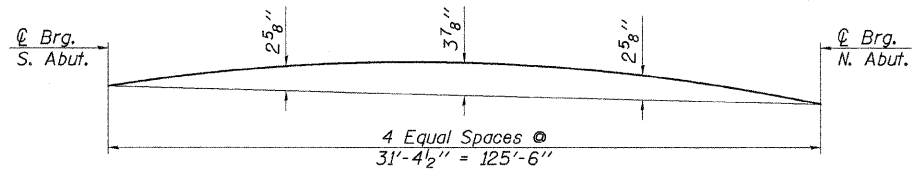
**TOP OF WEB ELEVATIONS**  
(For Fabrication Only)

	C Brg. S. Abut.	C Brg. N. Abut.
Girder 1	976.57	974.28
Girder 2	977.01	974.73
Girder 3	977.45	975.18
Girder 4	977.89	975.63
Girder 5	978.33	976.08



**SECTION A-A**

**GIRDER ELEVATION**  
Load carrying components designated "NTR" shall conform to the Supplemental Requirements for Notch Toughness, Zone 2.



**CAMBER DIAGRAM**

DESIGNED	J.A.M.
CHECKED	A.R.K.
DRAWN	S.A.P.
CHECKED	A.R.K. & J.A.M.

S-I-D 11-1-06

**STRUCTURAL STEEL**  
SECTION 93-00112-00-BR  
JO DAVIESS COUNTY  
COUNTY HIGHWAY 3  
STATION 18+74.60

4440 ASH GROVE  
SPRINGFIELD, IL 62711  
(217) 793-8600  
www.fehr-graham.com

**FEHR-GRAHAM & ASSOCIATES, LLC**  
ENGINEERING AND SCIENCE CONSULTANTS  
FREMONT, IL ROCKFORD, IL ROCKFORD, IL MONROE, WI SPRINGFIELD, IL

JOB NO.: 46859  
FILE: STEEL.dgn  
DATE: 03/24/09