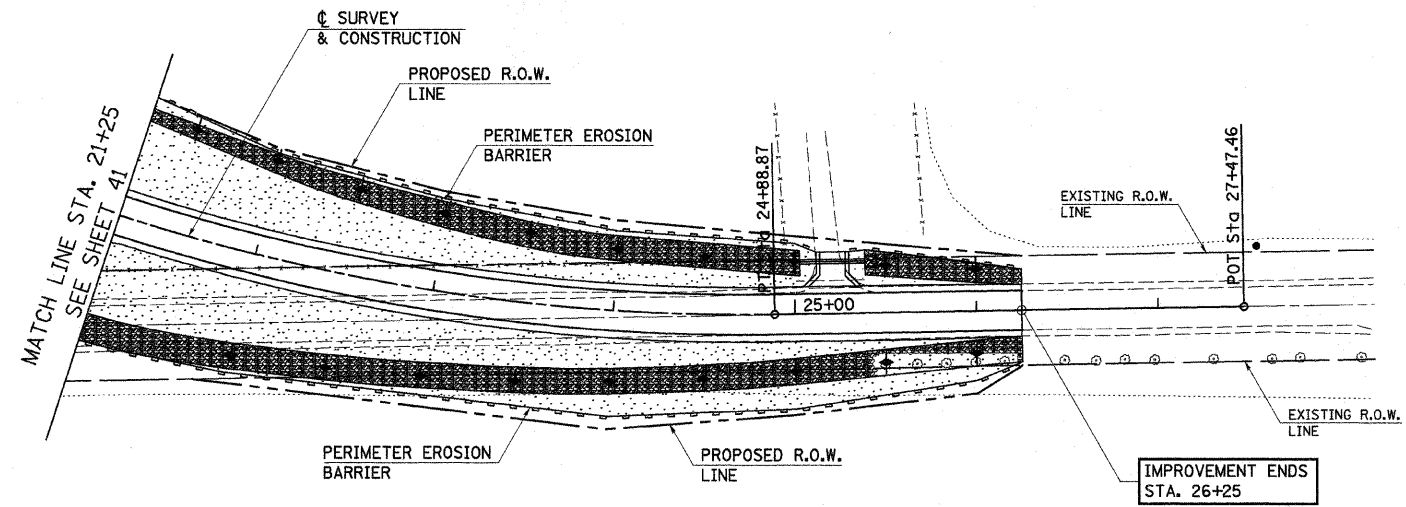


ROUTE NO.	SECTION	COUNTY	TOTAL SHEETS	SHEET NO.
C.H. 3	93-00112-00-BR	JoDAVIESS	42	42
ILLINOIS				

CONTRACT NO. 85462



TEMPORARY EROSION CONTROL:	
	PERIMETER EROSION BARRIER
	TEMPORARY DITCH CHECK
	INLET AND PIPE PROTECTION
PERMANENT EROSION CONTROL:	
	SEEDING CLASS 2, FERTILIZERS, & MULCH, METHOD 2
	STONE RIPRAP DITCH

NOTE: SEE SHEET 40 FOR EROSION CONTROL QUANTITIES.

**EROSION CONTROL PLAN**  
SECTION 93-00112-00-BR  
JoDAVIESS COUNTY  
COUNTY HIGHWAY 3  
STATION 18+74.60

4440 ASH GROVE  
SPRINGFIELD, IL 62711  
(217) 793-8600  
www.fehr-graham.com

**FEHR-GRAHAM & ASSOCIATES, LLC**  
ENGINEERING AND SCIENCE CONSULTANTS  
PERFORMING ENGINEERING, ARCHITECTURE, SURVEYING AND ENVIRONMENTAL SERVICES

DRAWN: S.A.P.  
DATE: 07/16/08

CHECKED: G.J.C.  
DATE: 01/12/09

JOB NO.: 46859  
FILE: EROSION.DGN  
DATE: 03/24/09