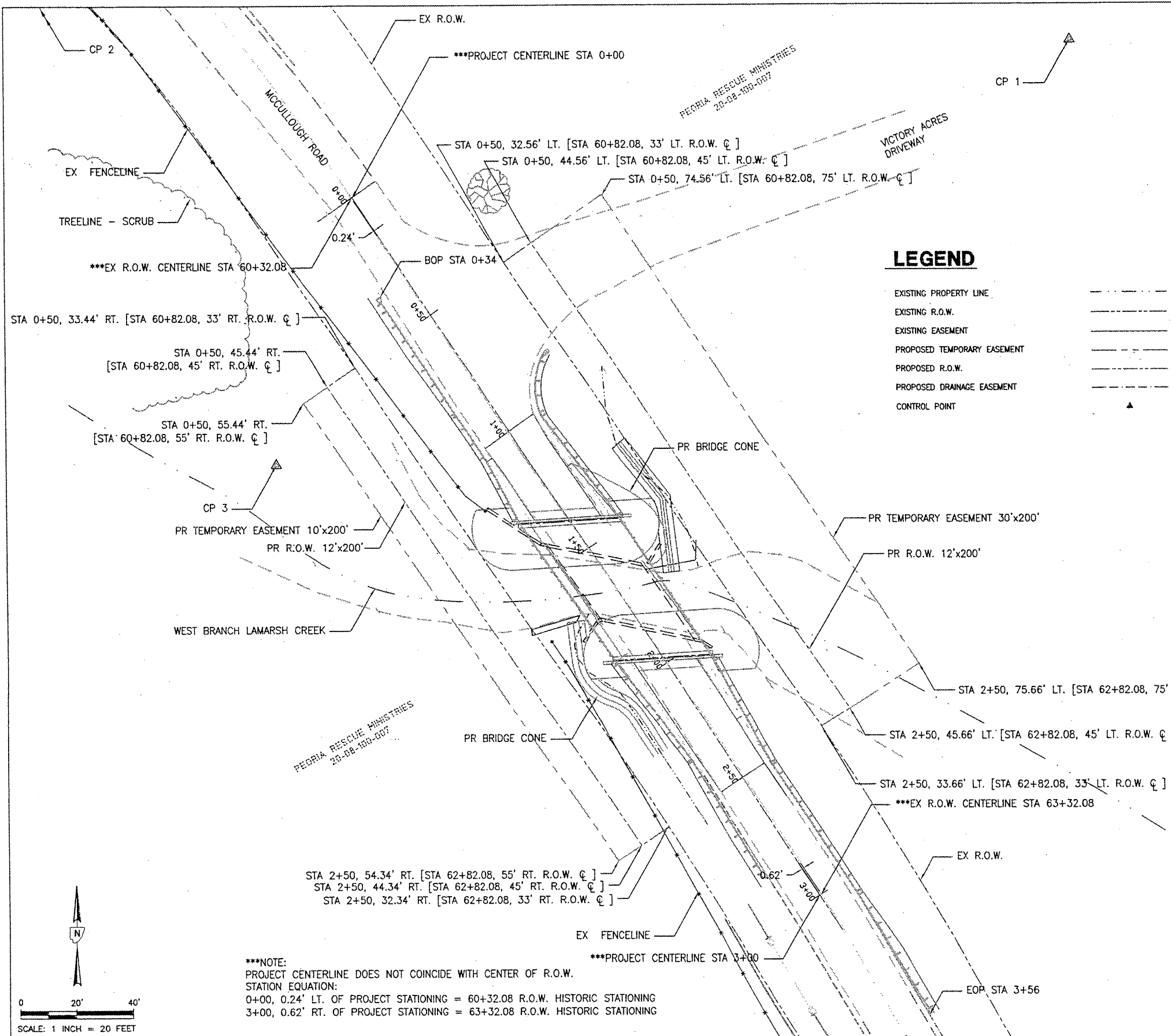
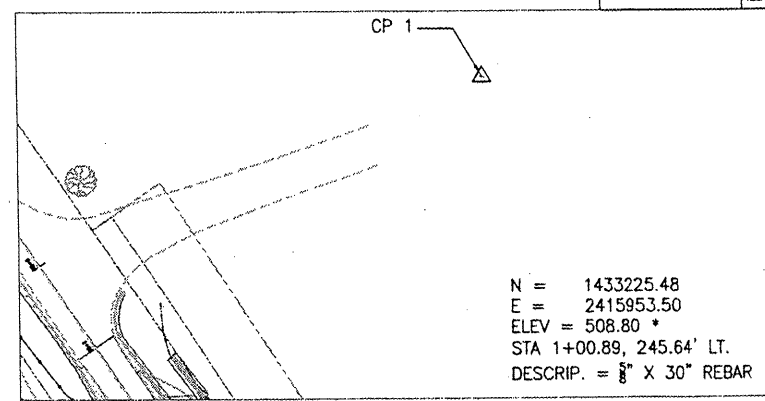


SECTION	COUNTY	TOTAL SHEETS	SHEET NO.
08-00037-02-BR	PEORIA	21	5
ILLINOIS		CONTRACT # 89372	



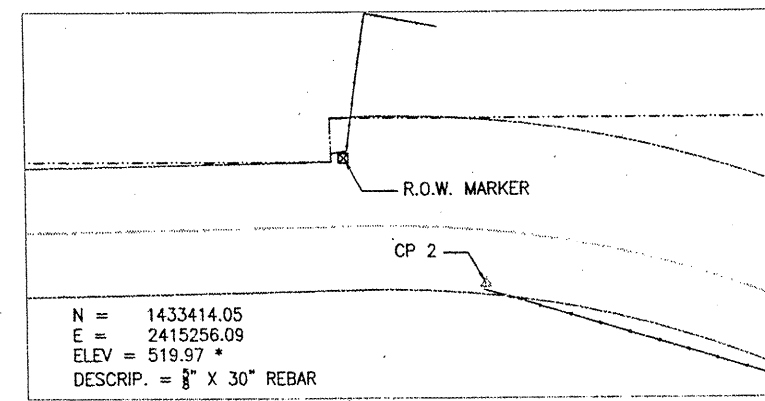
LEGEND

- EXISTING PROPERTY LINE
- EXISTING R.O.W.
- EXISTING EASEMENT
- PROPOSED TEMPORARY EASEMENT
- PROPOSED R.O.W.
- PROPOSED DRAINAGE EASEMENT
- CONTROL POINT



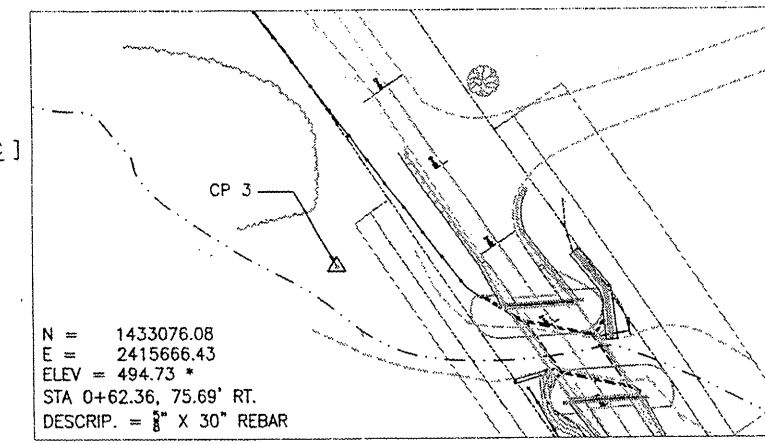
CONTROL POINT 1

SCALE: 1" = 50'



CONTROL POINT 2

SCALE: 1" = 50'

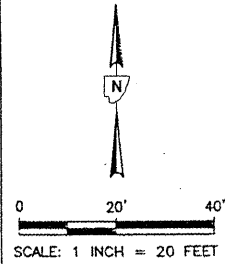


CONTROL POINT 3

SCALE: 1" = 50'

*NOTE:
HORIZONTAL COORDINATES SHOWN HEREON ARE BASED ON STATE PLANE COORDINATES FOR ILLINOIS - WEST.
ELEVATION DATUM SHOWN HEREON IS BASED ON NAVD88.
HORIZONTAL AND VERTICAL VALUES ARE DERIVED FROM OPUS STATIC 2 HOUR+ OBSERVATION AND GROUND SURVEY.

***NOTE:
PROJECT CENTERLINE DOES NOT COINCIDE WITH CENTER OF R.O.W.
STATION EQUATION:
0+00, 0.24' LT. OF PROJECT STATIONING = 60+32.08 R.O.W. HISTORIC STATIONING
3+00, 0.62' RT. OF PROJECT STATIONING = 63+32.08 R.O.W. HISTORIC STATIONING



REVISIONS			
NO.	DATE	DESCRIPTION	APPROVED

DESIGNED: AJS
DRAWN: AJS, JLA
CHECKED: EEA
DATE: 06/10/09

MACTEC
ENGINEERING AND CONSULTING, INC.
ILLINOIS PROFESSIONAL DESIGN FIRM PEISE, LICENSE #184-001138

**MCCULLOUGH ROAD BRIDGE
ROW STRIP MAP AND CONTROL**
PEORIA COUNTY HIGHWAY DEPT.
MCCULLOUGH ROAD BRIDGE #072-3063
6915 W. PLANK ROAD
PEORIA, ILLINOIS 61604