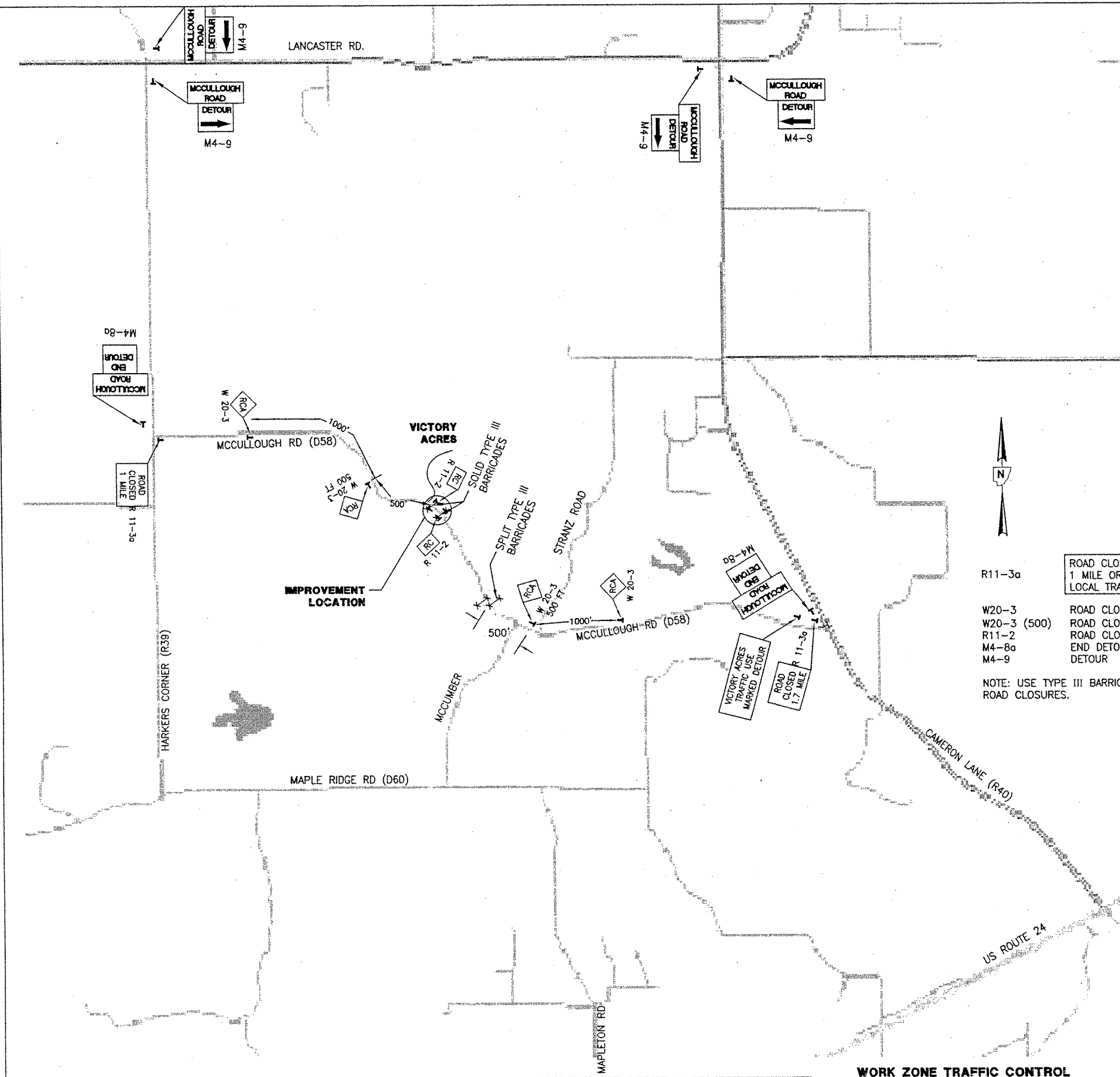


SECTION	COUNTY	TOTAL SHEETS	SHEET NO.
08-00037-02-BR	PEORIA	21	6
ILLINOIS		CONTRACT # 89372	



MAINTENANCE OF TRAFFIC

1. INSTALL R11-3A "ROAD CLOSED 1.7 MILES" AT CAMERON LANE FOR WESTBOUND TRAFFIC.
2. INSTALL R11-3A "ROAD CLOSED 1 MILE" AT HARKER'S CORNER FOR EASTBOUND TRAFFIC.
3. INSTALL ADVISORY SIGN "VICTORY ACRES USE MARKED DETOUR", AT CAMERON LANE.
4. INSTALL TRAFFIC CONTROL IN ACCORDANCE WITH IDOT STANDARD BLR 22, EAST OF THE IMPROVEMENT, CONFIGURED SO THAT SOUTHBOUND STRANZ ROAD AND NORTHBOUND MCCUMBER ROAD CAN SEE THE TRAFFIC CONTROL.
5. INSTALL TRAFFIC CONTROL IN ACCORDANCE WITH IDOT STANDARD BLR 22, WEST OF THE IMPROVEMENT, CONFIGURED SO THAT TRAFFIC CAN ACCESS THE DRIVEWAY TO VICTORY ACRES.
6. LOCATE TYPE III BARRICADES WEST OF MCCUMBER ROAD, SPLIT TO ALLOW LOCAL TRAFFIC.
7. LOCATE TYPE III BARRICADES AT THE LIMITS OF THE WORK ZONE TO COMPLETELY BLOCK OFF MCCULLOUGH ROAD DURING CONSTRUCTION. LOCATE R11-2 "ROAD CLOSED" SIGNS ON THE TYPE III BARRICADES AS SHOWN ON THE APPLICABLE IDOT STANDARDS.
8. TRAFFIC CONTROL AND PROTECTION SHALL CONSIST OF FURNISHING, INSTALLATION, MAINTENANCE, RELOCATION AND REMOVAL OF ALL TRAFFIC CONTROL AND PROTECTION INDICATED ON THIS DRAWING AND AS REQUIRED BY SECTION 701 OF THE IDOT STANDARD SPECIFICATIONS FOR ROAD AND BRIDGE CONSTRUCTION AND BY THE MANUAL ON UNIFORM TRAFFIC CONTROL DEVICES.
9. SIGNS REQUIRING SPECIAL FABRICATION E.G. MCCULLOUGH ROAD, VICTORY ACRES..., ETC., SHALL BE INCLUDED IN THE COST OF TRAFFIC CONTROL AND PROTECTION AND NO ADDITIONAL COMPENSATION WILL BE ALLOWED.

R11-3a ROAD CLOSED 1 MILE OR 1.7 MILES AHEAD LOCAL TRAFFIC ONLY

W20-3 ROAD CLOSED AHEAD ROAD CLOSED 500'

R11-2 ROAD CLOSED

M4-8a END DETOUR

M4-9 DETOUR


NOTE: USE TYPE III BARRICADES FOR ALL ROAD CLOSURES.

WORK ZONE TRAFFIC CONTROL

REVISIONS			
NO.	DATE	DESCRIPTION	APPROVED

DESIGNED AJS
 DRAWN AJS, JLA
 CHECKED EEA
 DATE 06/10/08

MACTEC
 ENGINEERING AND CONSULTING, INC.
 ILLINOIS PROFESSIONAL DESIGN FIRM PE/SE, LICENSE #184-001138

TRAFFIC CONTROL
 PEORIA COUNTY HIGHWAY DEPT.
 MCCULLOUGH ROAD BRIDGE #072-5704
 6915 W. PLANK ROAD
 PEORIA, ILLINOIS 61604