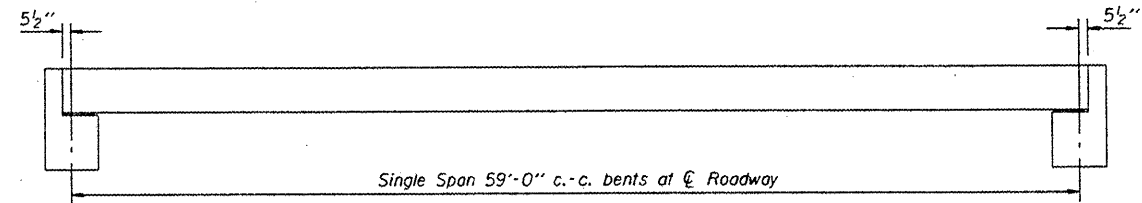
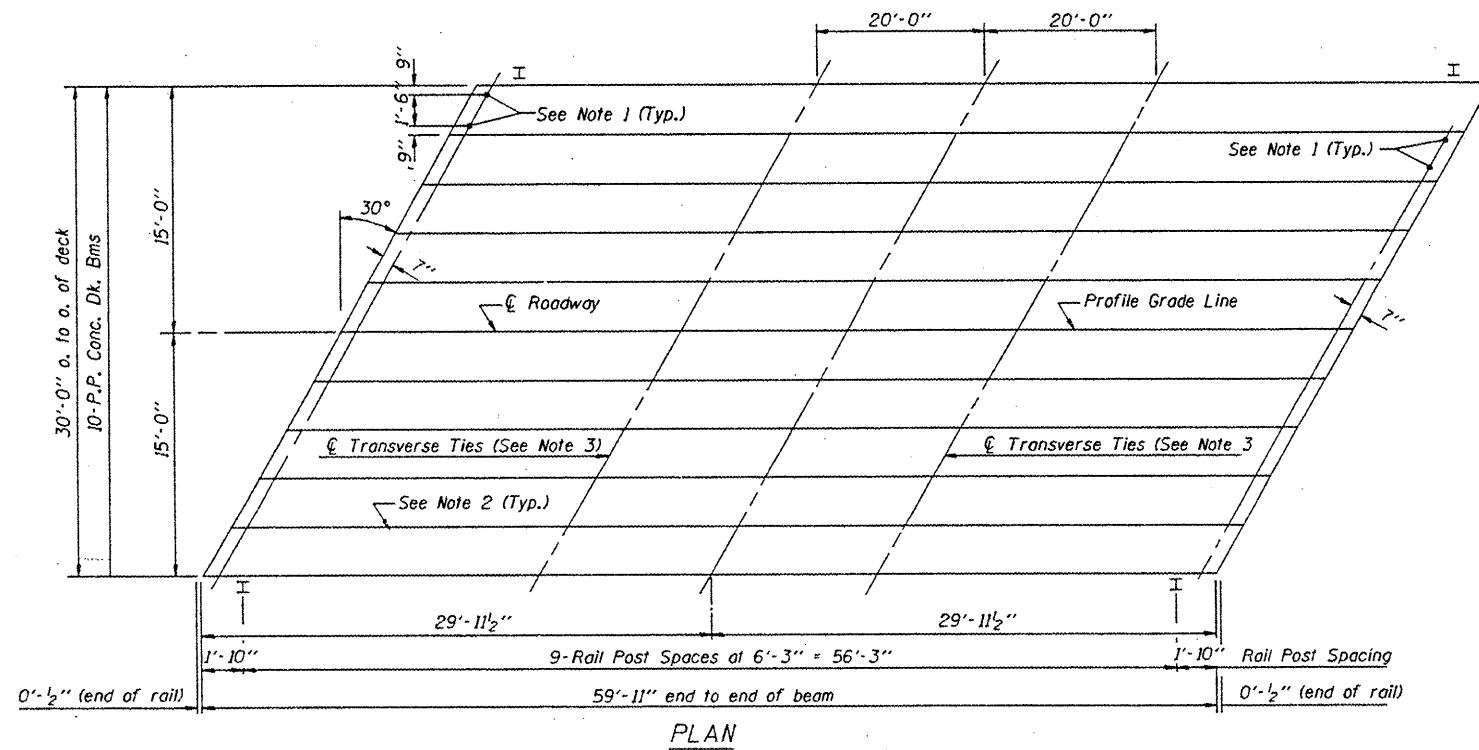


SECTION	COUNTY	TOTAL SHEETS	SHEET NO.
08-00037-02-BR	PEORIA	27	11
FED. ROAD DIST. NO. ILLINOIS		CONTRACT NO. 89372	

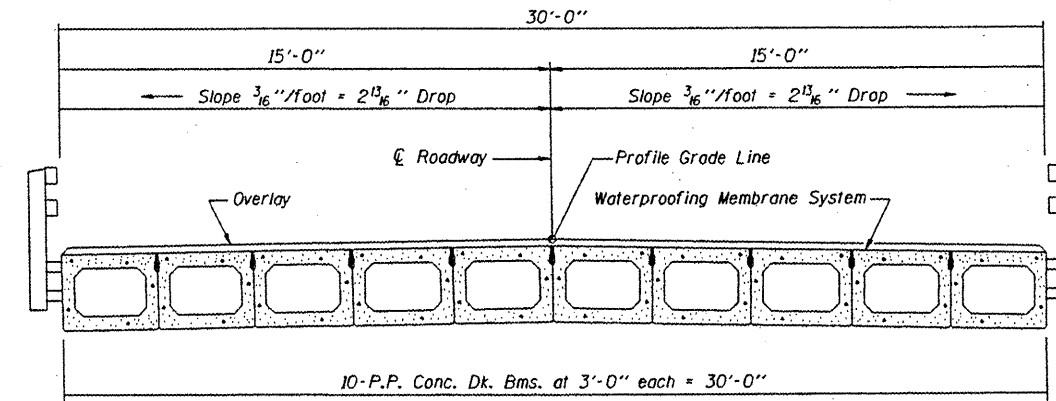
SHEET 2 OF 8



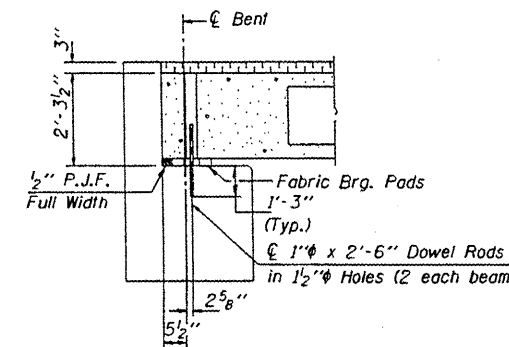
ELEVATION



PLAN



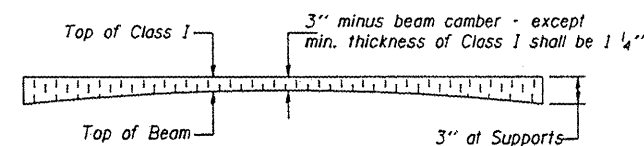
CROSS SECTION



SECTION AT ABUTS.
(Along ϵ Beams)

NOTES

1. After beams have been erected, holes shall be drilled into substructure and anchor dowels placed. Dowel holes shall be filled with non-shrink grout to top of beam and allowed to cure min. 24 hrs. prior to grouting the shear keys.
2. Longitudinal keys shall be grouted.
3. The 1" ϕ rods in the transverse tie assembly shall be tightened to a snug fit and the threads set. Pockets that receive transverse tie bar outside shall be filled with grout after transverse tie assembly is in place.



PROFILE OF OVERLAY

Note: Quantity of overlay for one span = 24.4 Tons

REVISIONS			
NO.	DATE	DESCRIPTION	APPROVED

DESIGNED AJS
DRAWN AJS/JLA
CHECKED EEA
DATE 06/10/09



P.P.C. DECK BEAM SUPERSTRUCTURE
PEORIA COUNTY HIGHWAY DEPT.
MCCULLOUGH ROAD BRIDGE #072-5704
6915 W. PLANK ROAD
PEORIA, ILLINOIS 61604