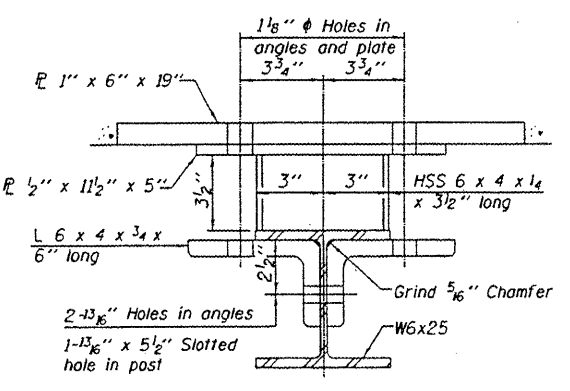
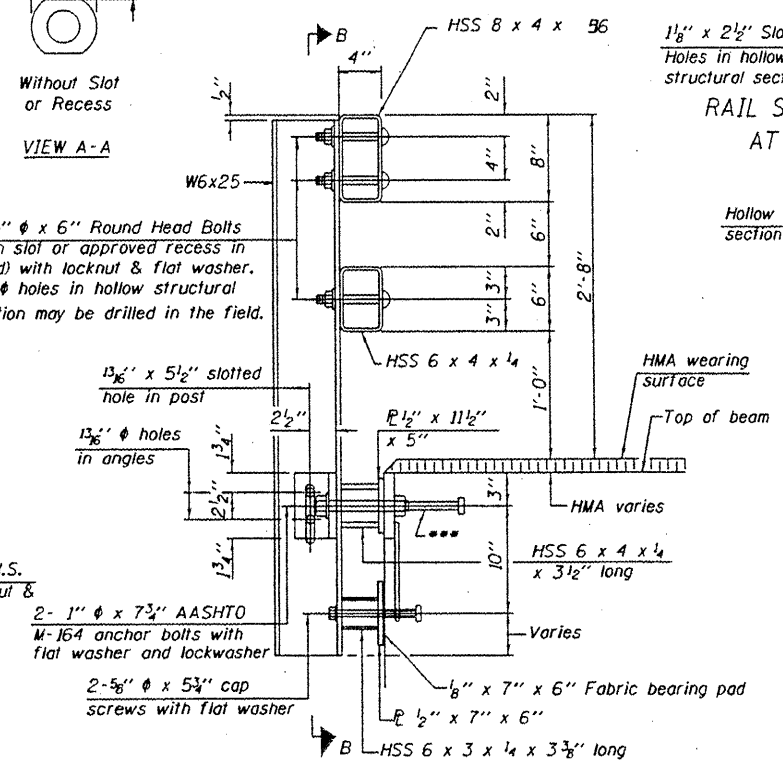


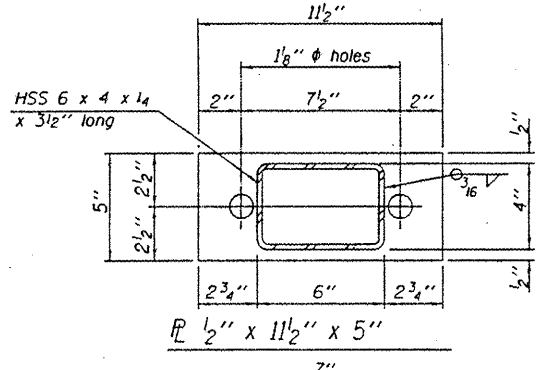
SECTION B-B



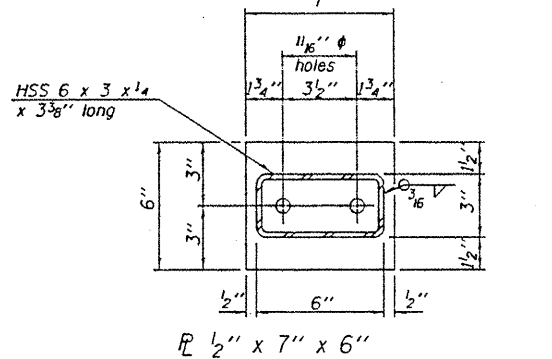
SECTION C-C



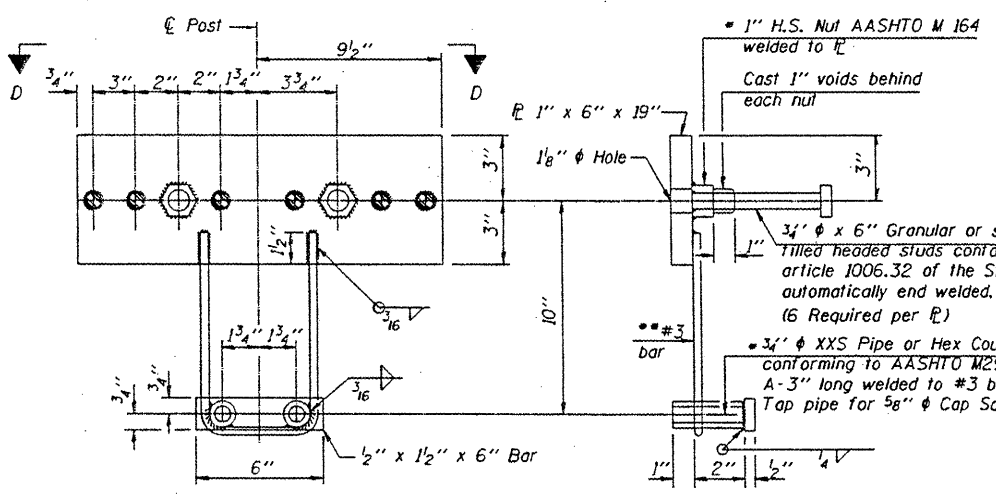
SECTION AT RAIL POST



PLAN-BOTT. SPLICE R TYPICAL

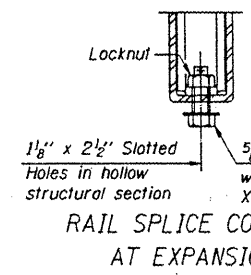


VIEW D-D

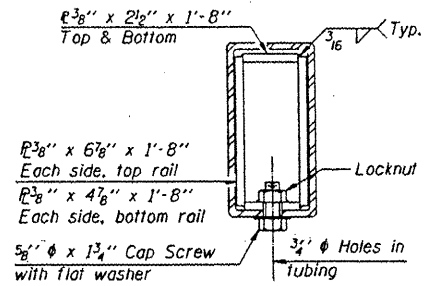


ANCHOR DEVICE

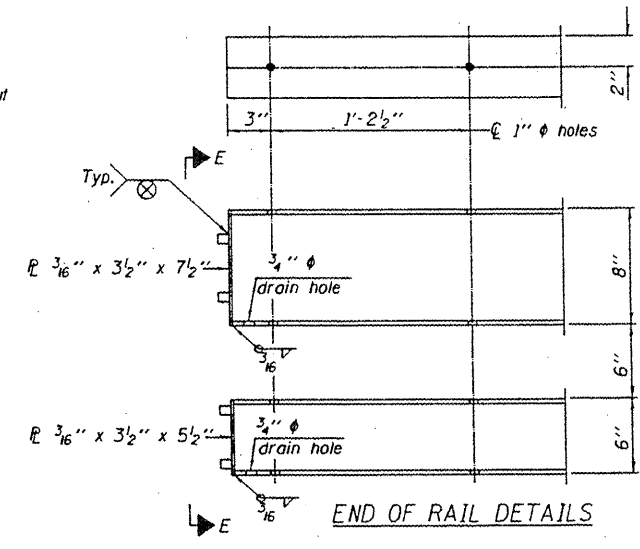
*Threaded areas shall be plugged or blocked off during casting of beam. Galvanized after fabrication.



RAIL SPLICE CONNECTION AT EXPANSION JT.



SECTION AT RAIL SPLICE



END OF RAIL DETAILS

Notes:
 All field drilled holes shall be coated with an approved zinc rich paint before erection.
 For multi-span bridges, sufficient 1/4" x 6" x 1/2" galvanized steel shims shall be provided to align rail between adjacent spans. Cost included with Steel Railing, Type SM.
 All steel rail members shall be galvanized according to Article 509.05 of the Standard Specifications.
 The studs of the anchor devices shall be placed below the top reinforcement bars and the outermost longitudinal reinforcement bar shall be placed directly above the studs of the rail post anchor device.

Whenever the lower insert assemblies interfere with strand locations, the #3 bars shall be cut and adjusted in order to allow raising or lowering of the lower inserts. Maximum adjustment not to exceed 1/2".

BILL OF MATERIAL

Item	Unit	Quantity
Steel Railing, Type SM	Foot	120

(6'-3" Maximum Post Spacing) (1/4" minimum to 3/8" maximum HMA thickness)

REVISIONS			
NO.	DATE	DESCRIPTION	APPROVED

DESIGNED: AJS
 DRAWN: AJS, JLR
 CHECKED: EEA
 DATE: 06/10/09

MACTEC
 ENGINEERING AND CONSULTING, INC.
 ILLINOIS PROFESSIONAL DESIGN FIRM PE/SC LICENSE #184-00138

STEEL RAILING, TYPE SM
 PEORIA COUNTY HIGHWAY DEPT.
 MCCULLOUGH ROAD BRIDGE #072-5704
 6915 W. PLANK ROAD
 PEORIA, ILLINOIS 61604