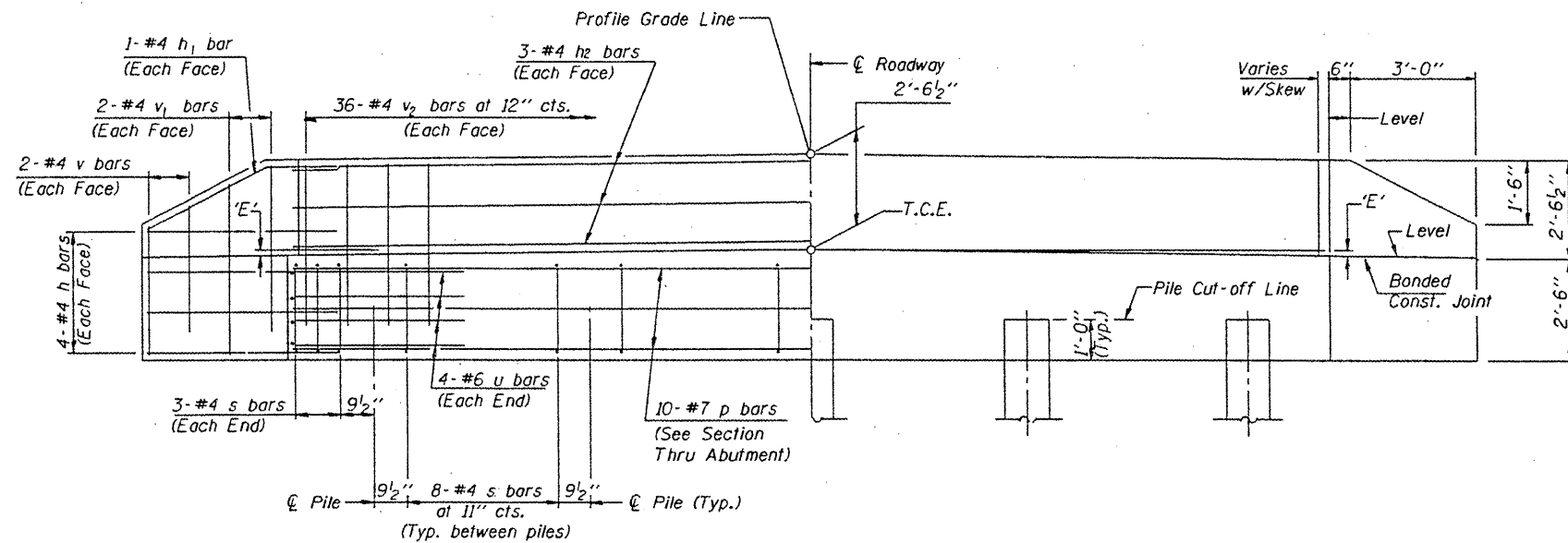


PLAN
(D=Designated Skew Angle)



ELEVATION

DIMENSION 'E'

UPGRADE END	DOWNGRADE END
2 3/8"	3 1/2"

NOTES

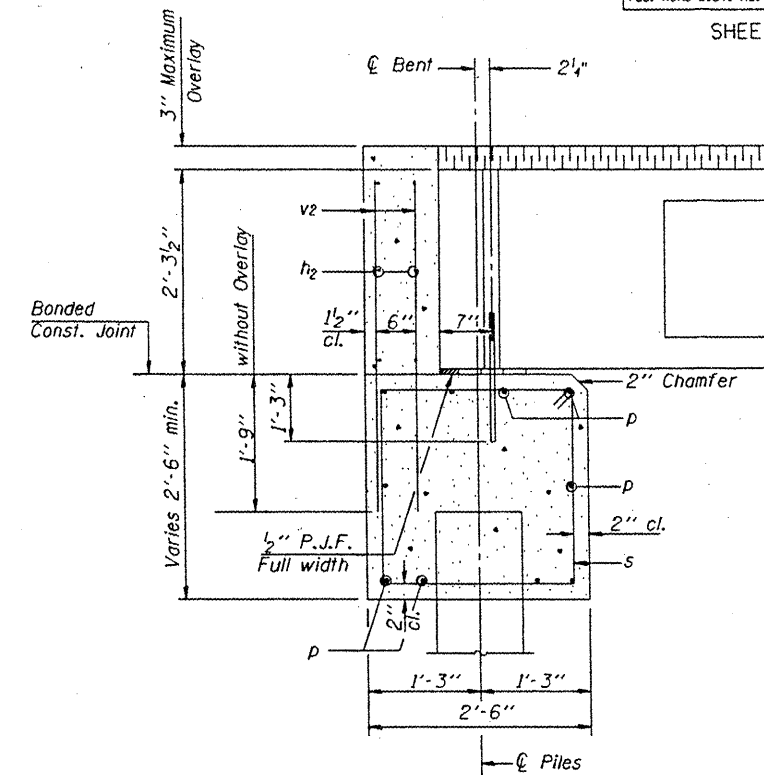
- The Backwall and the portion of the Wingwalls above the bonded construction joint shall be cast against the in-place beam.
- Reinforcement bars shall conform to the requirements of A.A.S.H.T.O. M-31 or M-322, Grade 60.
- Space reinforcement in cap to miss anchor bolts.

DESIGN STRESSES

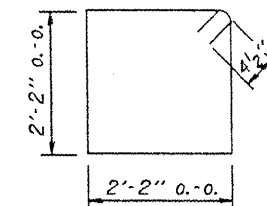
$f'_c = 3,500$ psi
 $f_y = 60,000$ psi

MAXIMUM PILE LOADS

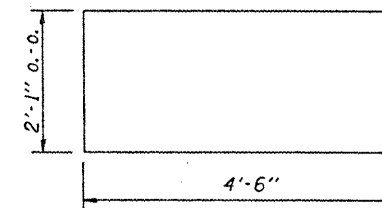
SPAN	TONS
60'	41



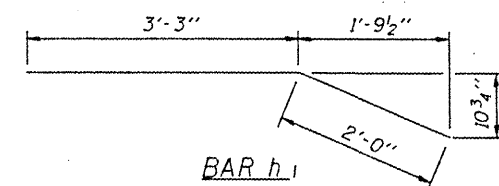
SECTION THRU ABUTMENT
(At Right Angles)



BAR s



BAR u



BAR h1

BILL OF MATERIAL FOR ONE ABUTMENT

Bar	No.	Size	Length	Shape
h	16	#4	5'-0"	—
h1	4	#4	5'-3"	—
h2	6	#4	36'-2"	—
p	10	#7	36'-2"	—
s	38	#4	9'-5"	□
u	8	#6	11'-1"	□
v	8	#4	3'-2"	—
v1	8	#4	4'-2"	—
v2	72	#4	3'-11"	—
Concrete Structures			12.9 Cu. Yds.	
Reinforcement Bars			1550 Lb.	

REVISIONS			
NO.	DATE	DESCRIPTION	APPROVED

DESIGNED — AJS
DRAWN — AJS, JLA
CHECKED — EEA
DATE — 06/10/09

MACTEC
ENGINEERING AND CONSULTING, INC.
ILLINOIS PROFESSIONAL DESIGN FIRM PE/SE, LICENSE #184-001138

ABUTMENTS
PEORIA COUNTY HIGHWAY DEPT.
MCCULLOUGH ROAD BRIDGE #072-5704
6915 W. PLANK ROAD
PEORIA, ILLINOIS 61604