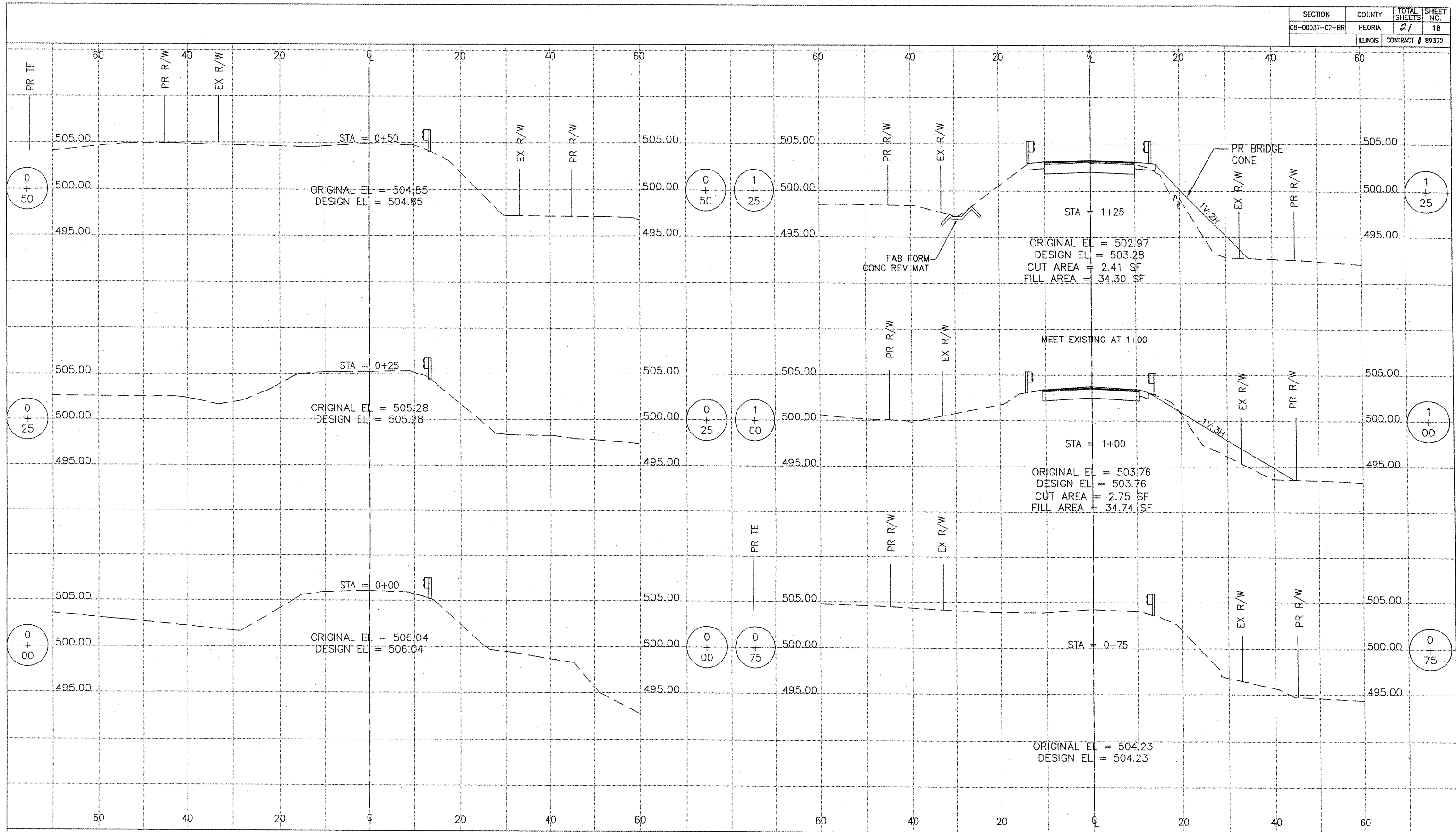


SECTION	COUNTY	TOTAL SHEETS	SHEET NO.
08-00037-02-BR	PEORIA	27	18
ILLINOIS		CONTRACT # B9372	



REVISIONS			
NO.	DATE	DESCRIPTION	APPROVED

DESIGNED AJS
 DRAWN AJS, JLA
 CHECKED EEA
 DATE 06/10/09

MACTEC
 ENGINEERING AND CONSULTING, INC.
ILLINOIS PROFESSIONAL DESIGN FIRM PE/SE, LICENSE #184-001138

CROSS SECTIONS - MCCULLOUGH RD.
 PEORIA COUNTY HIGHWAY DEPT.
 MCCULLOUGH ROAD BRIDGE #072-3063
 6915 W. PLANK ROAD
 PEORIA, ILLINOIS 61604

