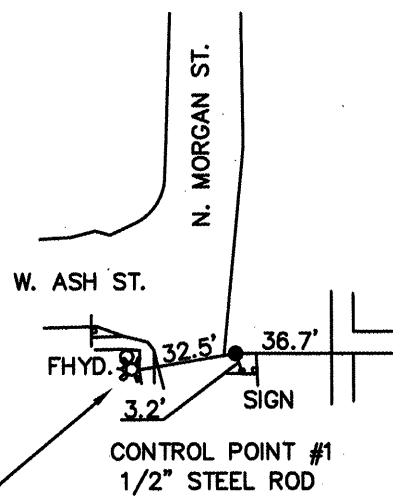
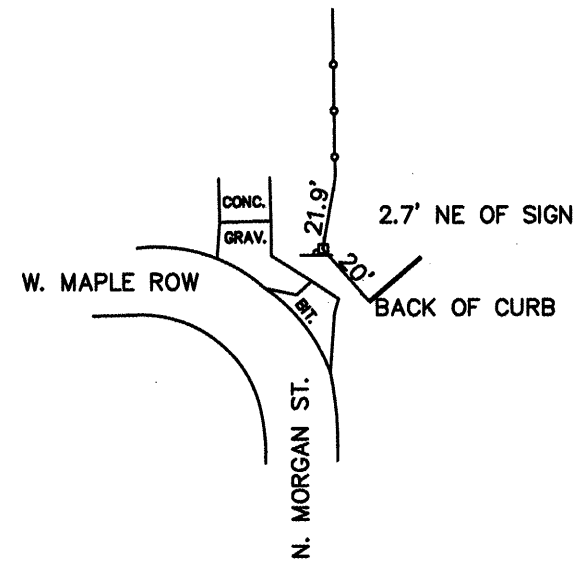


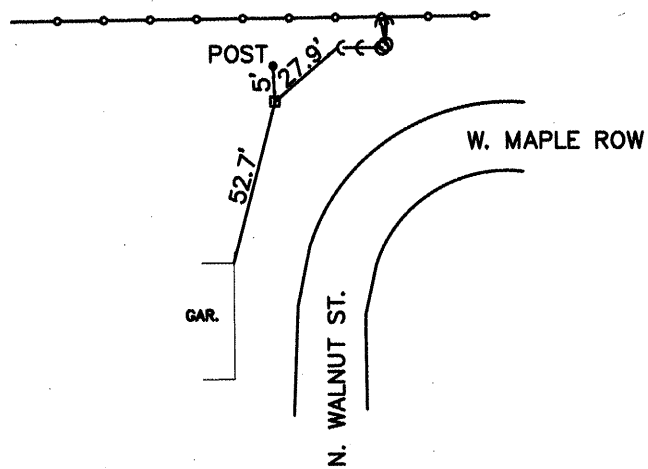
TBM - CAP BOLT MUE*LLER FIRE HYDRANT @ SW QUAD
 THE INTERSECTION OF N. MORGAN ST. AND W. ASH ST.
 INTERPOLATED ELEVATION FROM USGS QUAD 636.50



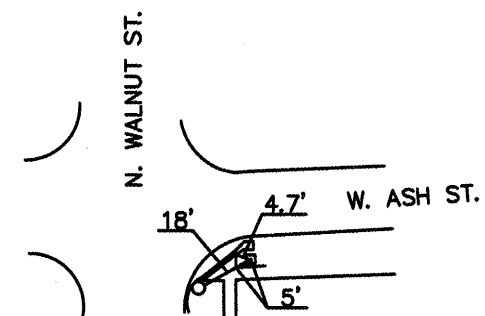
CONTROL POINT #1
 1/2" STEEL ROD
 N 10000.00
 E 10000.00
 ELEV. 633.10



CONTROL POINT #2
 HUB & TACK
 N 10344.1719
 E 9994.8085
 ELEV. 628.91



CONTROL POINT #3
 HUB & TACK
 N 10341.4237
 E 9645.3593
 ELEV. 633.44



CONTROL POINT #4
 HUB & TACK
 N 9999.9986
 E 9704.5036
 ELEV. 637.48

FILE NAME =	USER NAME = \$USERS	DESIGNED --	REVISED --
\$FILEL\$		DRAWN --	REVISED --
		CHECKED --	REVISED --
		DATE --	REVISED --

--	--	--	--

HORIZONTAL AND VERTICAL CONTROL			
SCALE: _____	SHEET NO. _____ OF _____ SHEETS	STA. _____	TO STA. _____

F.A. RTE.	SECTION	COUNTY	TOTAL SHEETS	SHEET NO.
	08-00001-00-SW	PEORIA	33	13
CONTRACT NO. 89507				
FED. ROAD DIST. NO. - ILLINOIS FED. AID PROJECT				